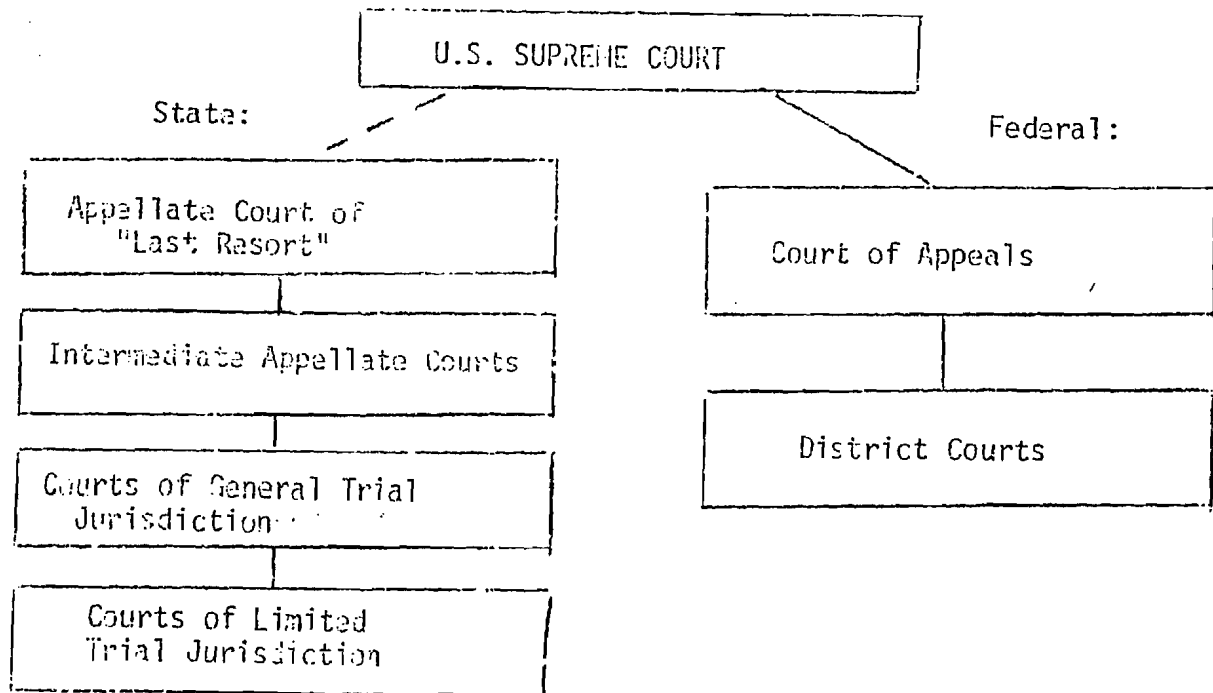


THE AMERICAN COURT STRUCTURE



KEY LEGAL TERMS

abscond
affidavit of indigency
appeal
arraignment

bail
bailiff
bench trial
bind over
bondsman

capital crime
change of venue
circumstantial evidence
court calendar
court clerk
cross-examination

direct evidence
direct examination
directed verdict
discovery
discretion
district attorney
diversion
docket

expert witness
extradiction

gag order
grand jury

habeas corpus
hearsay evidence

indictment
indigent
in forma pauperis
information
initial appearance

judicial circuit
jurisdiction
jury nullification
jury wheel
no bill
nolo prosequi
nolo contendere

peremptory challenge
petit jury
plea bargain
preliminary hearing
pretrial diversion
preventive detention
prima facie
probable cause
pro bono
pro se
prosecutor
public defender

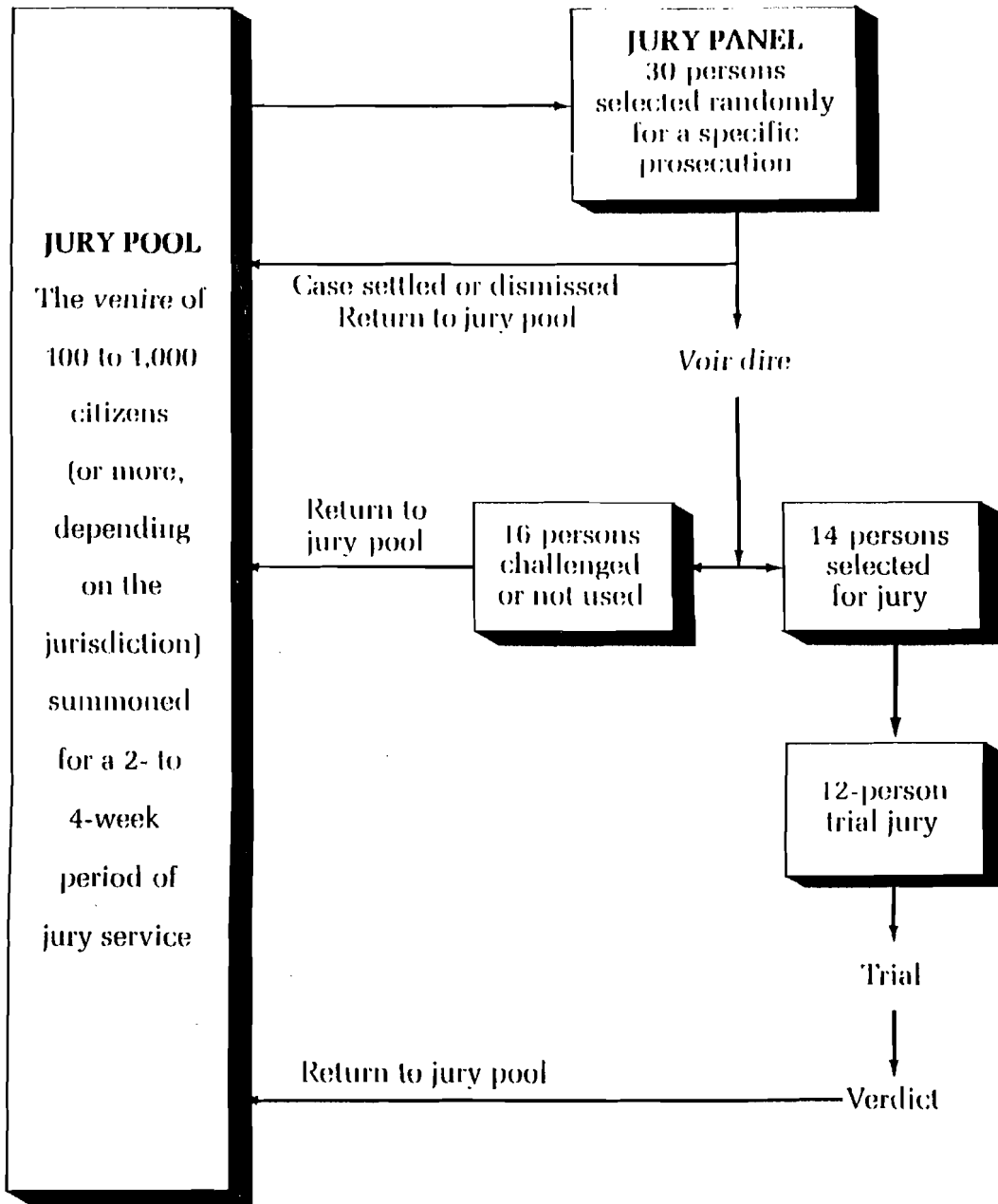
real evidence
rebuttal
recross
redirect
release on recognizance

sequester
strikes
surety

testimonial evidence
trial
true bill

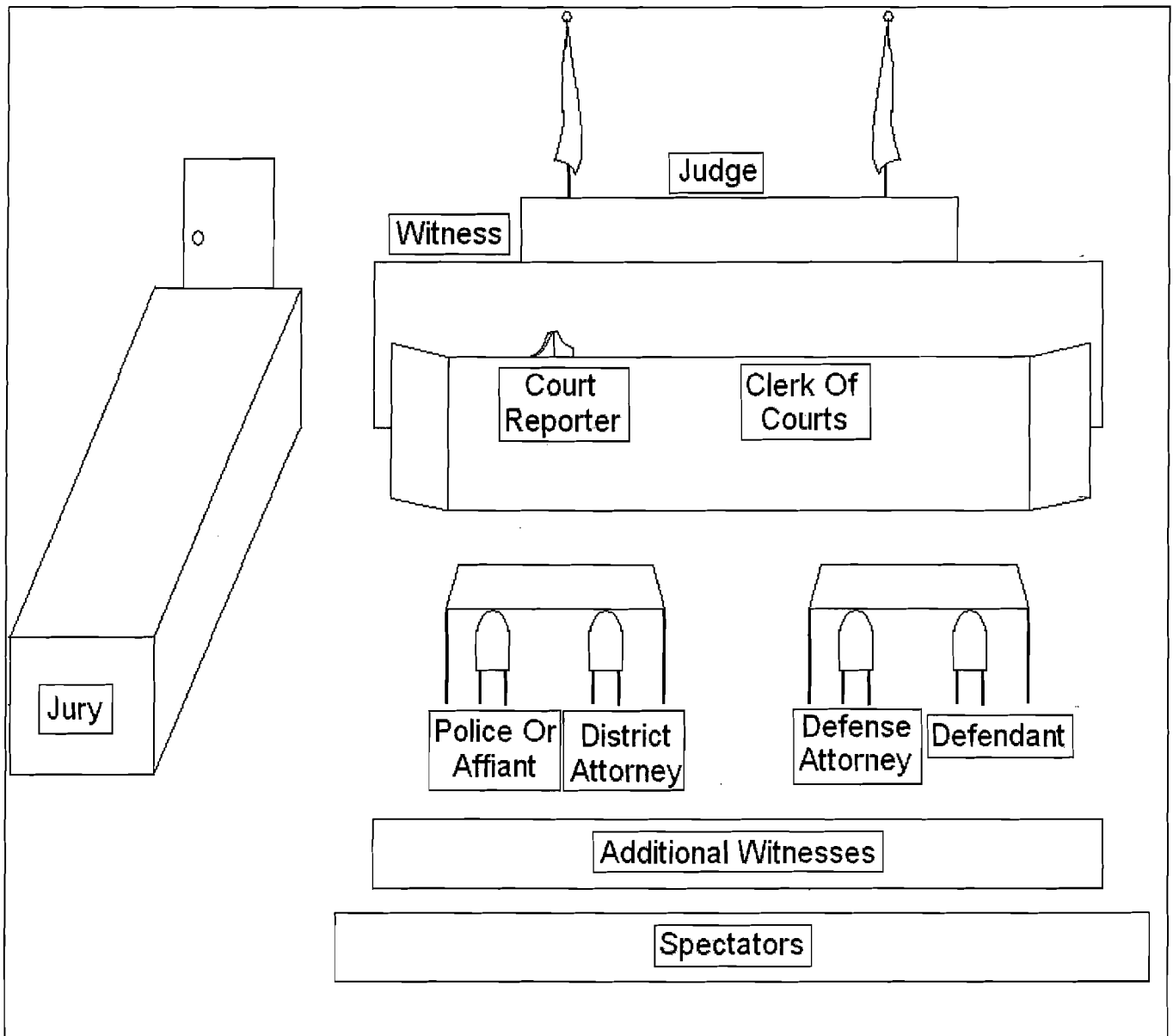
venire
victim impact statement
voir dire

writ of certiorari

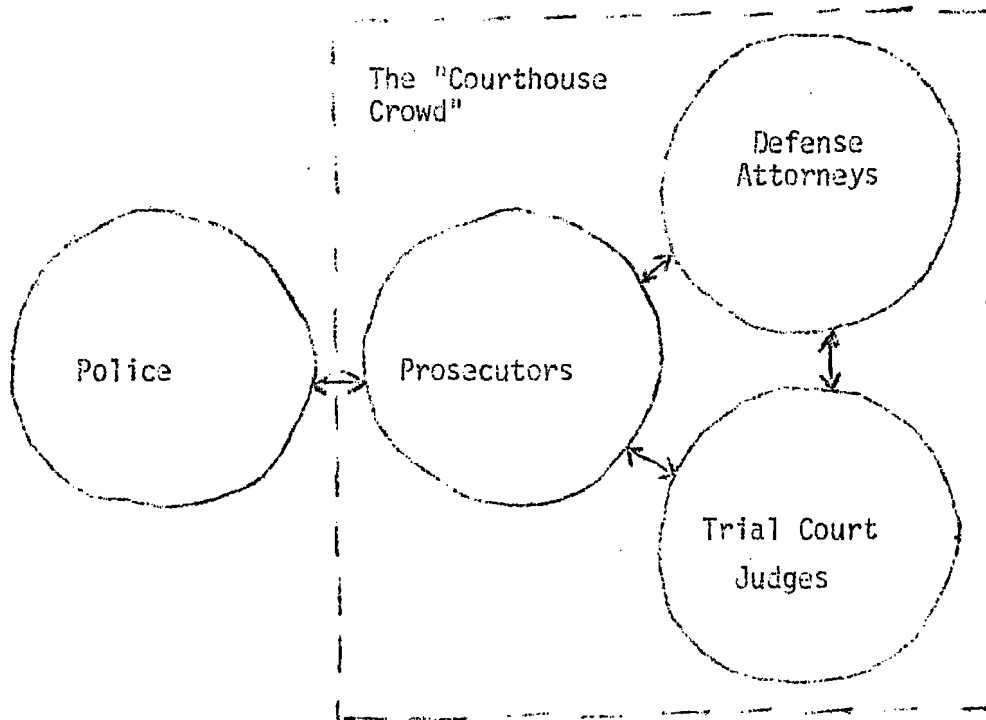


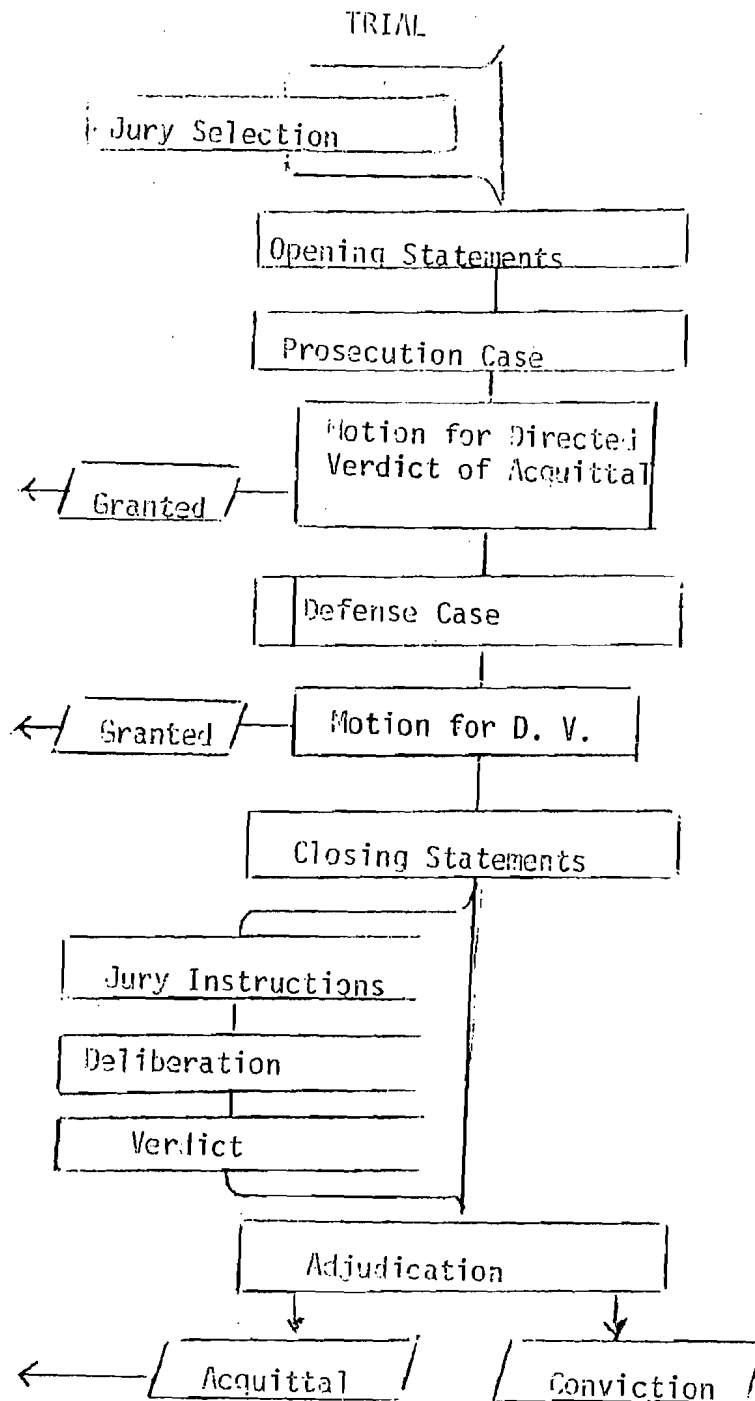
The Selection Process for a Twelve-Person Jury

Copyright © 1987 by Harcourt Brace Jovanovich, Inc. All rights reserved.



PROSECUTORS AND INTERAGENCY RELATIONS





Stages in a Criminal Trial

