

Competencies

After reading this document, you will be able to:

- ◆ Add Date Criteria to Items.
- ◆ Add Member Criteria for Items.
- ◆ Add Group Criteria to Items.
- ◆ Add Grade Book Criteria to Items.

Selective Release

Instructors are able to create custom learning paths by enabling *Selective Release*. *Selective Release* is accessible on either the *Build* or *Teach* tab.

There are four types of release criteria that can be set for items:

- ◆ Date criteria: allows instructors to select start and end dates and times when an item will be released to students.
- ◆ Member criteria: allows instructors to select the students and auditors to which an item is released.
- ◆ Group criteria: allows instructors to select the groups to which an item will be released.
- ◆ Grade Book criteria: allows instructors to release an item to students based on information in the *Grade Book*.

To Add Date Criteria to Items:

To release an item to students starting from a specific date and time or until a specific date and time, date criteria can be added to the item. For example, if an Assignment is to be released to students for one week only, date criteria can be added to the Assignment and it will be released (be visible) to students for only the week that is specified.



Tip If date criteria are added to an item, ensure the item is set to show. If the item is hidden, when the release criteria is satisfied, the item will not be visible.

When adding date criteria to an assignment, ensure that the date criteria does not conflict with the due and cutoff dates of the assignment.

- 1 From the *Designer* or *Instructor Tools*, click **Selective Release**.
- 2 From the *Selective Release* screen and the *Course Content* tab, locate the item.
- 3 Click *Set Release Criteria* for the item.
- 4 Click **Add Date Criteria**.

- 5 Under *Available Starting*, select the start date and time for the item to be released.
- 6 Under *Available Until*, select the end date and time.

The screenshot shows a web browser window titled "Selective Release: Date Criteria - Microsoft Internet Explorer". The main content area is titled "Add Date Criteria". It is divided into two sections: "Available Starting" and "Available Until".

Available Starting:

- Immediately
-
-

Available Until:

- Unlimited
-
-

At the bottom of the dialog are two buttons: "Save" and "Cancel".

Figure 1: Selective Release – Set Date Criteria

- 7 Click **Save**.
- 8 Click **Save**. The item will be released when the release criteria are satisfied. To indicate that release criteria have been set for the item, the word *Conditional* appears in parentheses next to the item.

To Add Member Criteria to Items:

If an item is to be released only to certain students, member criteria can be added to the item.

- 1 From the *Selective Release* screen, click the *Course Content* tab and locate the item.
- 2 Click **Set Release Criteria** for the item.
- 3 Click **Add Member Criteria**.
- 4 To release the item to specific students only:
 - a Next to *User ID*, select *Equals*.
 - b Select members by doing one of the following:
 - To select one or more members, next to each member to which to release the item, select the check box.

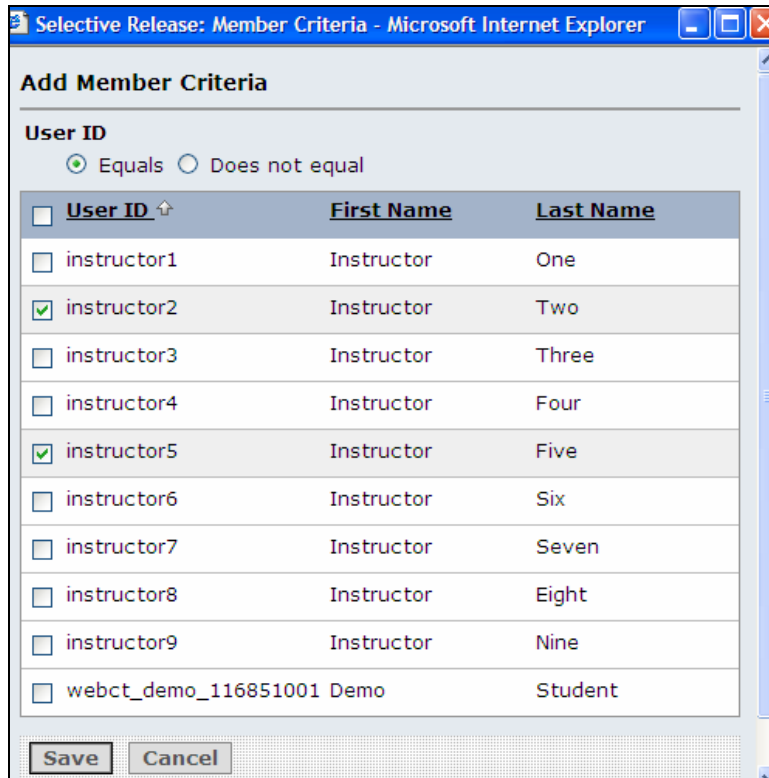


Figure 2: Selective Release – Add Member Criteria to Items

- 5 Or to specify the students that are not to have the item released to them.
 - a Next to *User ID*, select *Does not equal*.
 - b Select members by doing one of the following:
 - To select one or more members, next to each member who are not to have the item released, select the check box.



Tip If a quiz is to be released to all students except a few who will be completing a written assignment instead, member criteria can be added to the quiz and it will be released to all students except the ones specified.

- To select all members, in the table heading row, select the check box.
- 6 Click **Save**.
 - 7 Click **Save**. The item will be released when the release criteria are satisfied. To indicate that release criteria have been set for the item, the word *Conditional* appears in parentheses next to the item.

To Add Group Criteria to Items:

If learning groups have been created in the course and items are to be released to certain groups only, then add group criteria to the item.

- 1 From the *Selective Release* screen, click the **Course Content** tab and locate the item.

- 2 Click **Set Release Criteria** for the item.
- 3 Click **Add Group Criteria**.
- 4 Do one of the following:
 - a Next to *Group Name*, select *Equals*.
 - Select groups by doing one of the following:
 - To select one or more groups, next to each group the item is to be released to, select the check box.
 - To select all groups, in the table heading row, select the check box.
 - To specify the groups to which are not to have the item released:
 - b Next to *Group Name*, select *Does not equal*.
 - Select groups by doing one of the following:
 - To select one or more groups, next to each group that is not to have the item released, select the check box.
 - To select all groups, in the table heading row, select the check box.

<input type="checkbox"/> Group ↑	Members
<input type="checkbox"/> Group Project 1	Instructor Seven
<input type="checkbox"/> Group Project 2	Instructor One
<input checked="" type="checkbox"/> Group Project 3	

Figure 3: Selective Release – Adding Group Criteria to items

- 5 Click **Save**.
- 6 Click **Save**. The *Selective Release* screen appears. The item will be released when the release criteria are satisfied. To indicate that release criteria have been set for the item, the word *Conditional* appears next to the item.

To Add Grade Book Criteria to Items:

If an item is to be released to students based on information in the *Grade Book*, *Grade Book* criteria can be added to the item.



Note Adding Grade Book criteria allows customized learning paths to be created. Enrichment can be offered for a certain percent correct on a quiz or exam while reinforcement can be offered to others.

- 1 From the *Selective Release* screen, click the **Course Content** tab and locate the item.
- 2 Click **Set Release Criteria** for the item.
- 3 Click **Add Grade Book Criteria**.
- 4 From the *Criteria* drop-down list, select a *Grade Book* criterion.
- 5 From the *Condition* drop-down list, select the condition that is to be used with the *Grade Book* criterion.

Selective Release: Grade Book Criteria - Microsoft Internet Explorer

Add Grade Book Criteria

Criteria: Discussion Board for Group Assignment - Group Project 1 Condition: Greater than Value: 80

Save Cancel

Figure 4: Selective Release – Adding Grade Book Criteria to Items

- 6 If the condition requires a value, enter the value for the *Grade Book* criterion and condition to meet.
- 7 Click **Save** on the *Grade Book Criteria* pop-up window.
- 8 Click **Save**. The item will be released when the release criteria are satisfied. To indicate that release criteria have been set for the item, the word *Conditional* appears next to the item in parentheses.