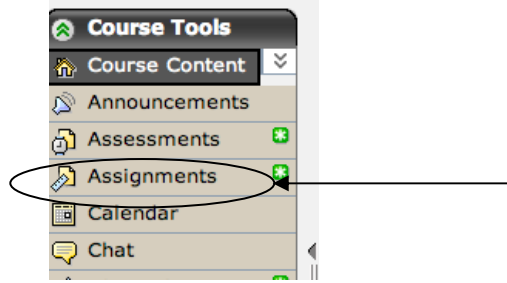


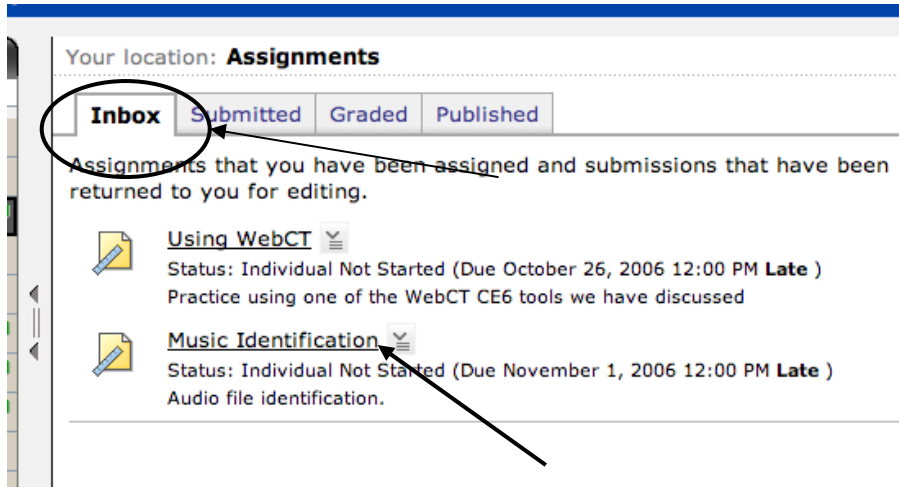
Blackboard Student Tutorial Using the Assignment Tool



Click **Assignments** on the **Course Menu**

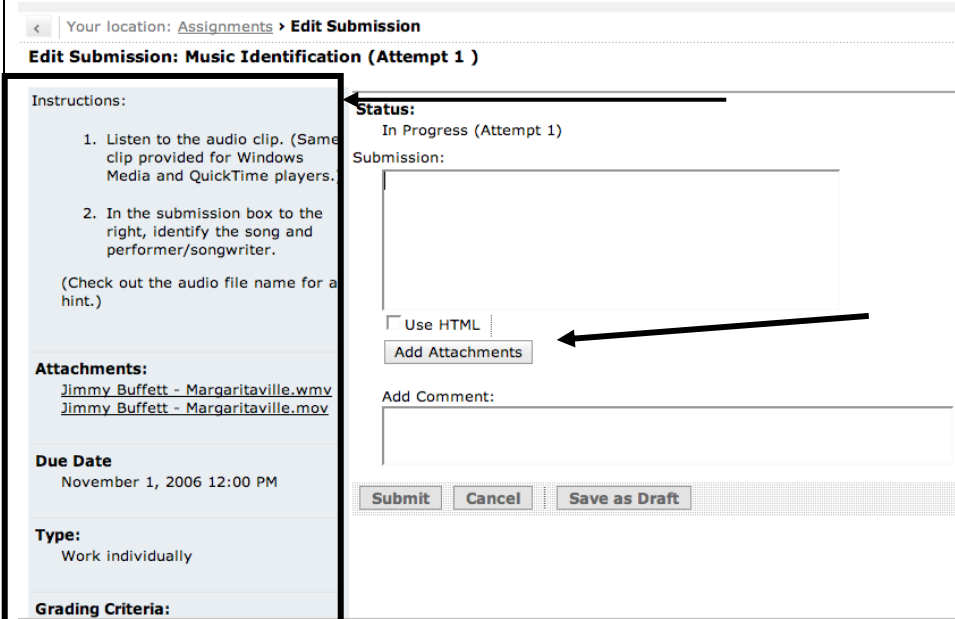
The **Inbox** tab will have the list of assignments due.

Click the name of the assignment. In this case, we will click on Music Identification.



The instructor's directions will be listed on the left.

To add an attachment click **add attachment**.



Instructions:

1. Listen to the audio clip. (Same clip provided for Windows Media and QuickTime players.)
2. In the submission box to the right, identify the song and performer/songwriter.

(Check out the audio file name for a hint.)

Attachments:

[Jimmy Buffett - Margaritaville.wmv](#)
[Jimmy Buffett - Margaritaville.mov](#)

Due Date

November 1, 2006 12:00 PM

Type:

Work individually

Grading Criteria:

Status:

In Progress (Attempt 1)

Submission:

Use HTML

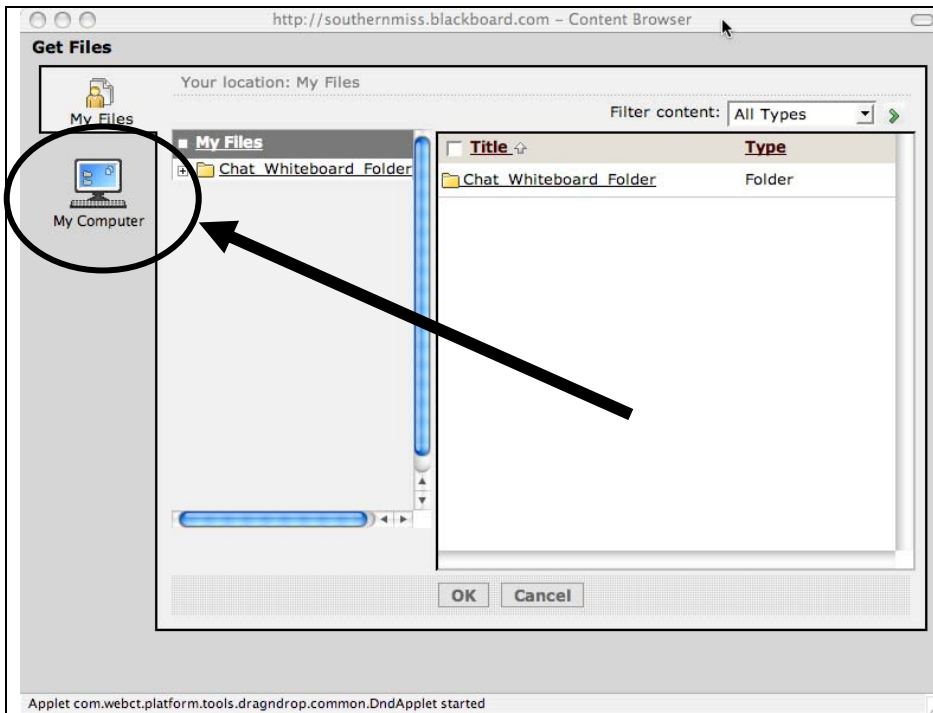
Add Attachments

Add Comment:

Submit

Cancel

Save as Draft

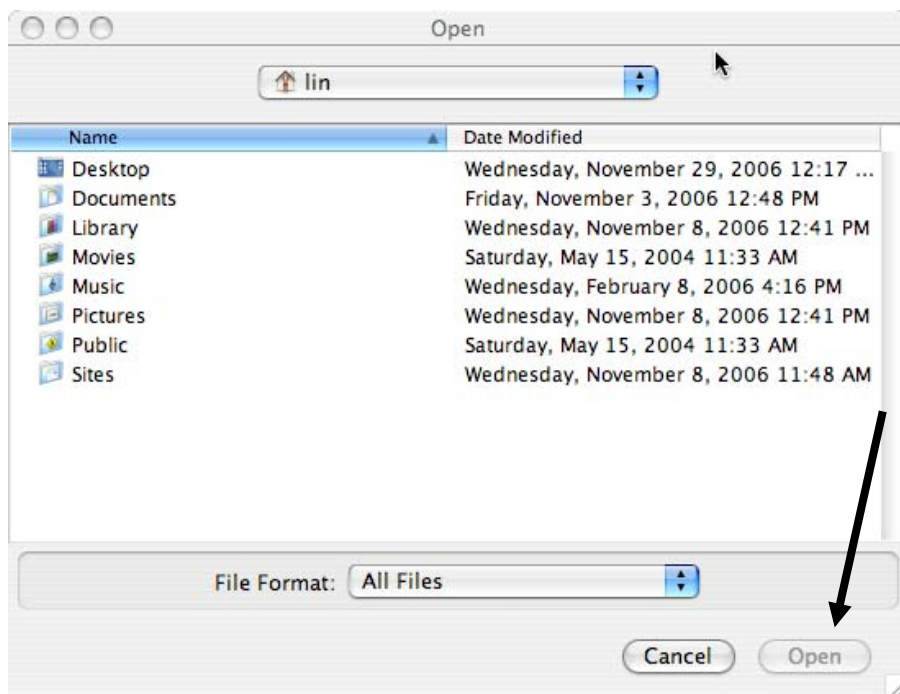


This window will appear after clicking **Add Attachment**.

Click **My Computer** to access your files.

This opens your computer's directory.

Find the appropriate file and click **Open**.



Your location: [Assignments](#) > **Edit Submission**

Edit Submission: Music Identification (Attempt 1)

Instructions:

1. Listen to the audio clip. (Same clip provided for Windows Media and QuickTime players.)
2. In the submission box to the right, identify the song and performer/songwriter.
(Check out the audio file name for a hint.)

Attachments:

[Jimmy Buffett - Margaritaville.wmv](#)
[Jimmy Buffett - Margaritaville.mov](#)

Due Date

November 1, 2006 12:00 PM

Type:

Work individually

Grading Criteria:

Status:

In Progress (Attempt 1)

Submission:

Use HTML

Add Comment:

Your location: **Assignments**

[Inbox](#)

[Submitted](#)

[Graded](#)

[Published](#)

Submissions you have submitted and resubmitted, and assignments for



[Supplement Request Form search](#) ▾

Status: Submitted **Missed**



[Attach a document](#) ▾

Status: Submitted **Missed**



[Intro discussion](#) ▾

Status: Submitted **Missed**



[Weather conditions](#) ▾

Status: Submitted **Missed**



[Assignment - Unit 2](#) ▾

Status: Submitted **Missed**

Your location: **Assignments**

[Inbox](#)

[Submitted](#)

[Graded](#)

[Published](#)

Submissions that have been reviewed by the Section Instructor.

There are currently no Submissions for this view.

Once you have completed your assignment click **Submit**.

If you would like to review your work before submitting. **Save as Draft**.

Or

Cancel.

The **Submitted** tab shows which assignments you have completed or missed the due date.

The **Graded** tab is where you will find your assignments that have been graded.

Your location: **Assignments**

[Inbox](#) [Submitted](#) [Graded](#) **Published**

Submissions that you or the Section Instructor decide to publish to all member course.



[Music Identification](#)

Published by Rayborn, Susan

October 25, 2006 10:06 AM

The **Published** tab is the location for those assignments and group work which your instructor would like you to review.