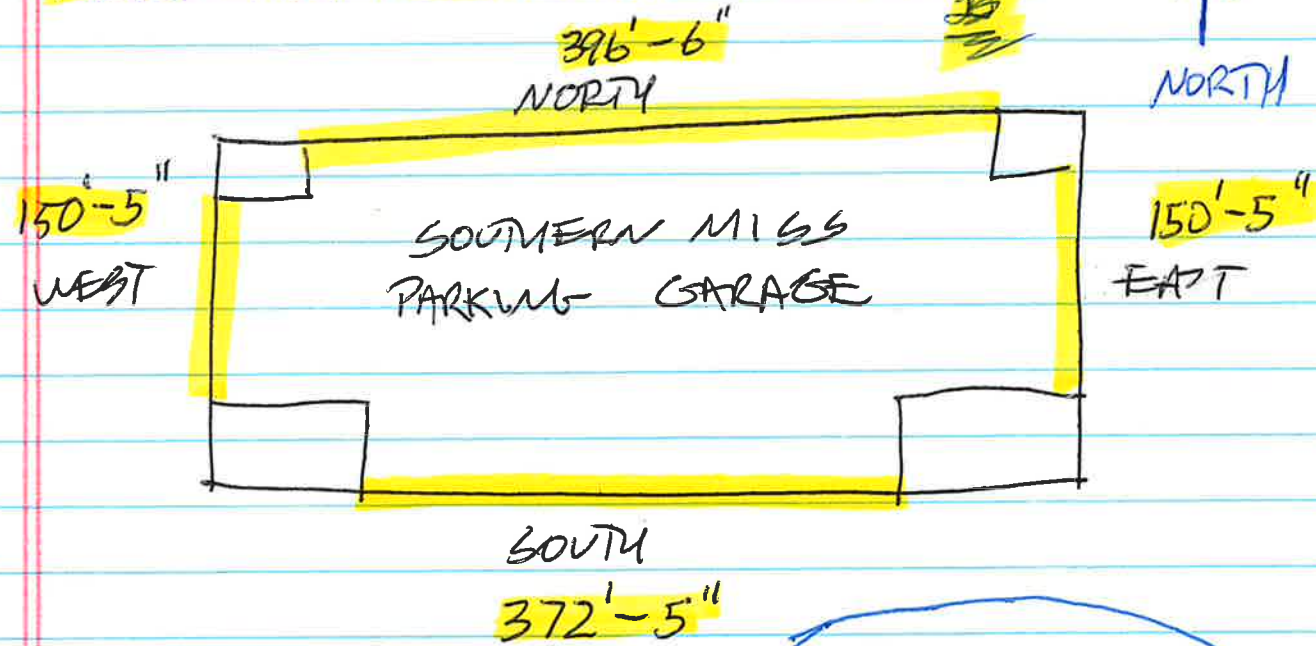


⊗ THESE MEASUREMENTS WERE MADE BY THE UNIVERSITY, AND HAVE BEEN PROVIDED AS A CURTESY. THESE MEASUREMENTS ARE TO BE FIELD VERIFIED BY EACH BIDDING CONTRACTOR.



APPENDIX A

60'  
TALL

SE - STAIRWELL  
7'-11" - LARGE OPENING  
3'-11" - SMALL OPENING

GRAND TOTAL  
1,070.1 ± LINEAR  
FEET. (5TH FLOOR)

60'  
TALL

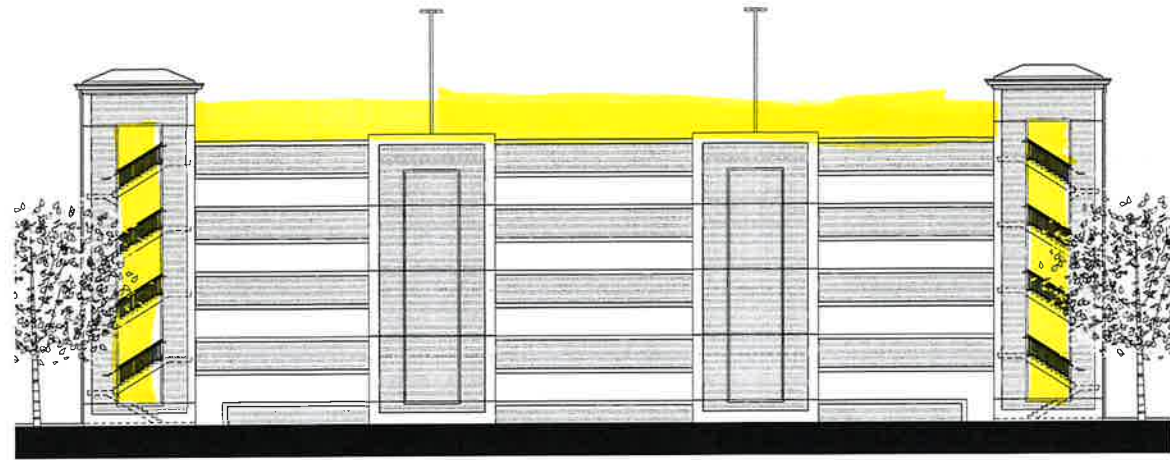
SW - STAIRWELL  
8'-0" (7'-9" BOTTOM)  
3'-11"

60'  
TALL

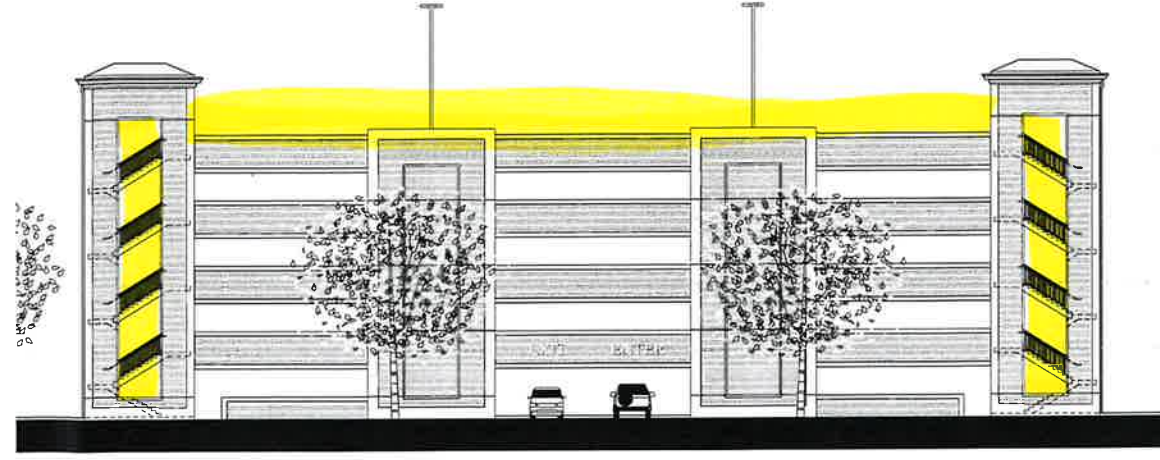
NW - STAIRWELL  
7'-11"  
3'-11"

60'  
TALL

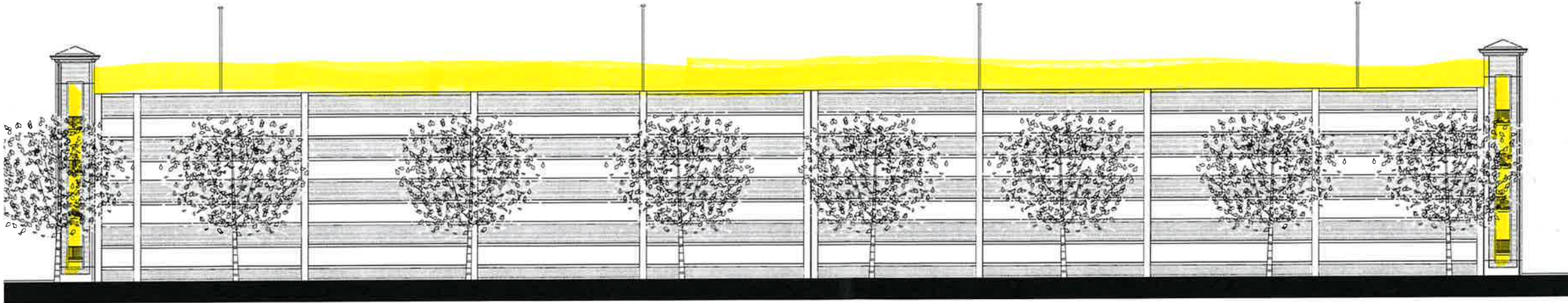
NE - STAIRWELL  
7'-11" (3'-10" TOP)  
3'-11"



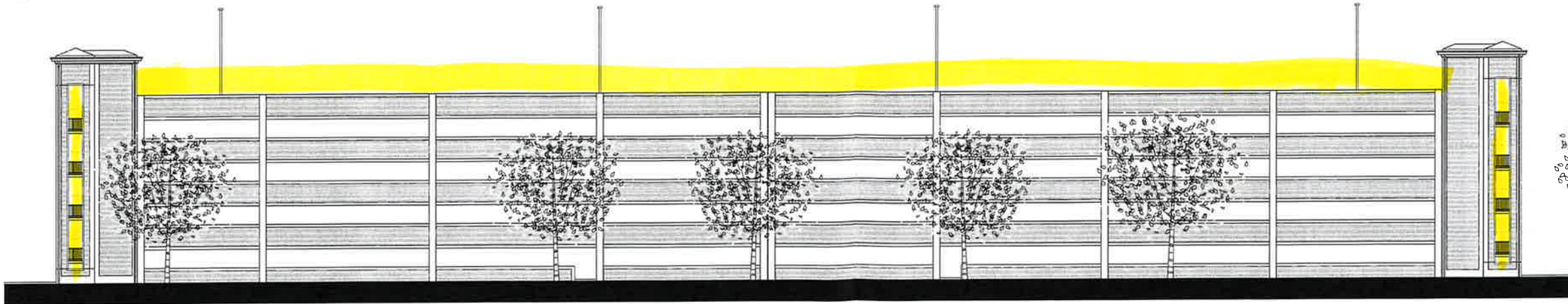
4 East Elevation  
SCALE: 1/16" = 1'-0"



3 West Elevation  
SCALE: 1/16" = 1'-0"



2 North Elevation  
SCALE: 1/16" = 1'-0"



1 South Elevation  
SCALE: 1/16" = 1'-0"



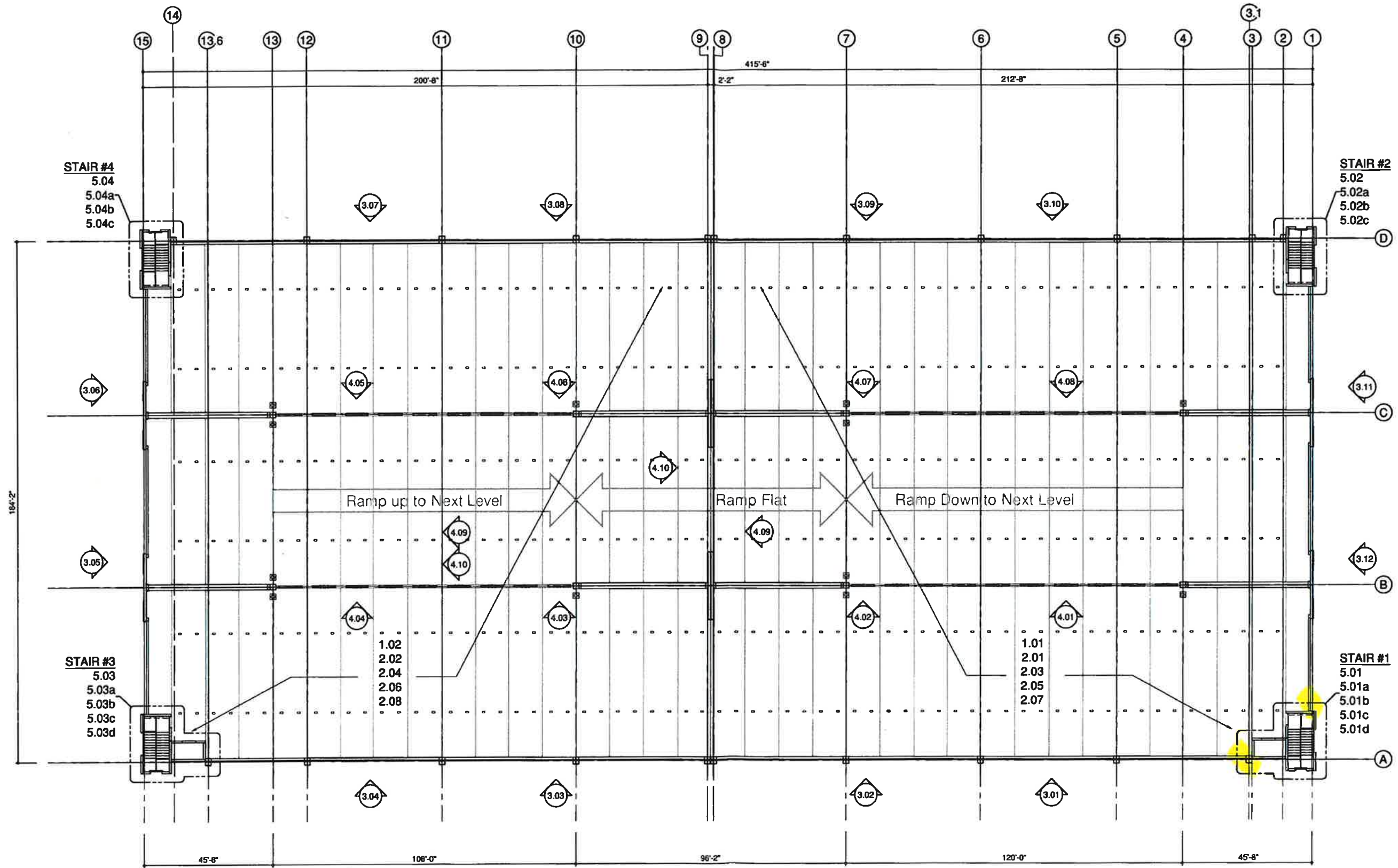
THE UNIVERSITY OF SOUTHERN MISSISSIPPI  
HATTIESBURG, MISSISSIPPI

EAGLE PARKING, LLC

JULY 2009

A5.1  
ELEVATIONS

THESE DRAWINGS ARE THE SOLE PROPERTY OF LEAP ASSOCIATES INTERNATIONAL, INC. AND SHALL NOT BE REPRODUCED IN WHOLE OR IN PART BY ANY OTHER PARTY FOR REUSE ON ANY EXTENSION OF THIS PROJECT OR ANY OTHER PROJECT(S) WITHOUT THE EXPRESS WRITTEN PERMISSION OF LEAP ASSOCIATES INTERNATIONAL, INC.



| No. | Description         | Date | Drawn | Check |
|-----|---------------------|------|-------|-------|
| 6   |                     |      |       |       |
| 5   |                     |      |       |       |
| 4   |                     |      |       |       |
| 3   |                     |      |       |       |
| 2   |                     |      |       |       |
| 1   | ISSUED FILE & FIELD |      |       |       |

**LEAP ASSOCIATES INTERNATIONAL, INC.**  
CONSULTING STRUCTURAL ENGINEERS  
10000 Bay Vista Way, Suite 100  
Tampa, Florida 33617  
Phone: (813) 988-8870  
Fax: (813) 988-8870  
LEAP Project # FSPM004  
Drawing Scale: 1/8" = 1'-0" (Partial Scale May Vary)

**University of Southern Mississippi**  
Hattiesburg, MS  
**4th Street Parking Garage**  
**F-S Prestress**  
Project: 4th Street Parking Garage  
Client: University of Southern Mississippi  
Architect: Albert J. Associates  
Drawing Title: Master Key Plan  
Contractor: F-S Prestress  
Engineer: F-S Prestress

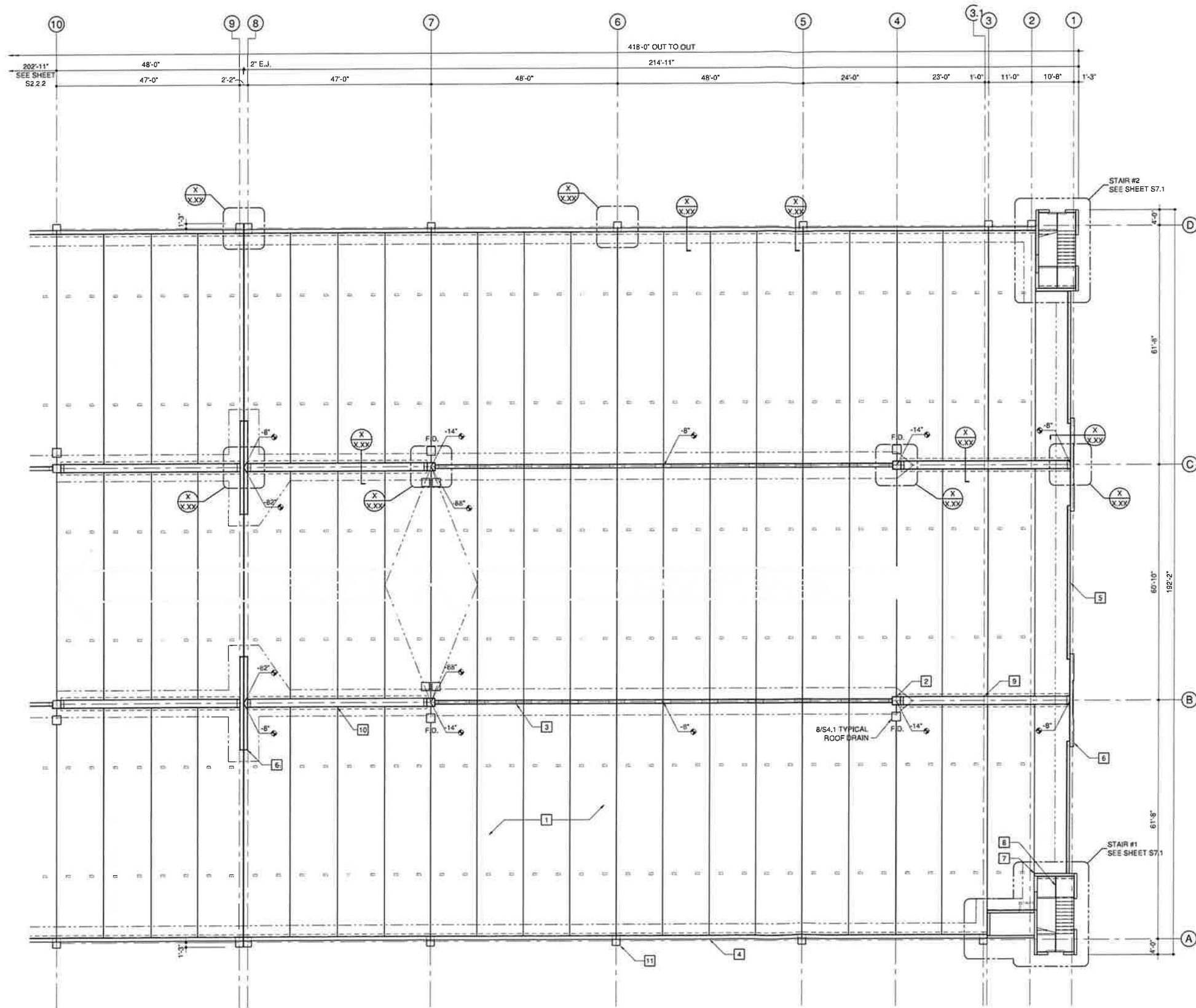
**NOTES:**  
1.00 series sheets show foundation plans.  
2.00 series sheets show elevated plans.  
3.00 series sheets show exterior elevations.  
4.00 series sheets show interior elevations.  
5.00 series sheets show stair plans/elevations.  
12.00 series sheets show wash reinforcing.

Issued For Construction  
File And Field

North  
Master Key Plan

Sheet Number  
**0.02**

THESE DRAWINGS ARE THE SOLE PROPERTY OF LEAP ASSOCIATES INTERNATIONAL, INC. AND SHALL NOT BE REPRODUCED IN WHOLE OR IN PART BY ANY OTHER PARTY FOR REUSE ON ANY EXTENSION OF THIS PROJECT OR ANY OTHER PROJECT(S) WITHOUT THE EXPRESS WRITTEN PERMISSION OF LEAP ASSOCIATES INTERNATIONAL, INC.

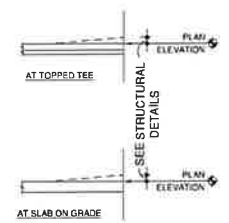


**SHEET NOTES:**

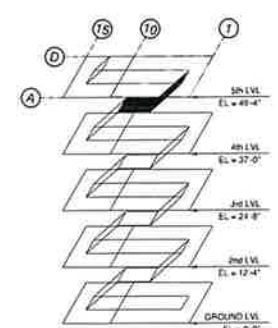
- 1) FOR GENERAL NOTES SEE SHEET S0.1
- 2) FOR FLOOR ELEVATIONS BETWEEN POINTS SHOWN USE STRAIGHT LINE INTERPOLATION
- 3) ALL SECTION / DETAILS CUTS AND STRUCTURAL INFORMATION SHOWN ON THIS PLAN ARE TYPICAL FOR ALL LEVELS U.N.C.
- 4) SEE SHEET S3.1 FOR COLUMN DETAILS
- 5) SEE SHEET S4.1 FOR DOUBLE TEE / BEAM DETAILS
- 6) REFER TO ISOMETRIC FOR FLOOR TO FLOOR ELEVATIONS
- 7) ELEVATIONS ALONG THE PERIMETER, WHERE NONE SHOWN EL = 0'-0"

**STRUCTURE NOTES:**

- 1) PRECAST DOUBLE TEE 28" DEEP x 12'-0" NOM. w/ 3" OF C.I.P. TOPPING
- 2) PRECAST INT. COLUMN 24" x 24" SEE DETAIL 10 / S3.1 FOR LIGHT POLE INFO.
- 3) PRECAST LITE WALL 10" x 8'-0"
- 4) PRECAST LOAD BRG SPANDREL 11" x 7'-1" w/ CONT. 8" LEDGE
- 5) PRECAST NON-LOAD BRG SPANDREL 8" x 7'-1"
- 6) PRECAST SHEAR WALL 10" x 24'-0"
- 7) PRECAST STAIR / ELEVATOR WALL 8" THK
- 8) PRECAST STAIR / LANDING
- 9) PRECAST INVERTED TEE BEAM 40" x 36 1/8" DP
- 10) PRECAST LEDGER BEAM 32" x 42 3/8" DP
- 11) PRECAST EXT. COLUMN 24" x 30"



**1) Plan Elevation Key**



**Key Plan**



**Albert & Associates Architects**  
 514 Main Street / P.O. Box 1587  
 Hattiesburg, MS 39401 / 39403  
 P - 601.544.1970 F - 601.544.4714  
 Architect

**Finlo Construction**  
 1116 Finlo Drive / P.O. Box 35  
 Hattiesburg, MS 39401 / 39403  
 P - 601.545.2000  
 General Contractor

**University of Southern Mississippi**  
 4th Street P/G Hattiesburg, MS

| No | Date       | Description   |
|----|------------|---------------|
| ## | ###/###/## | Describe Here |

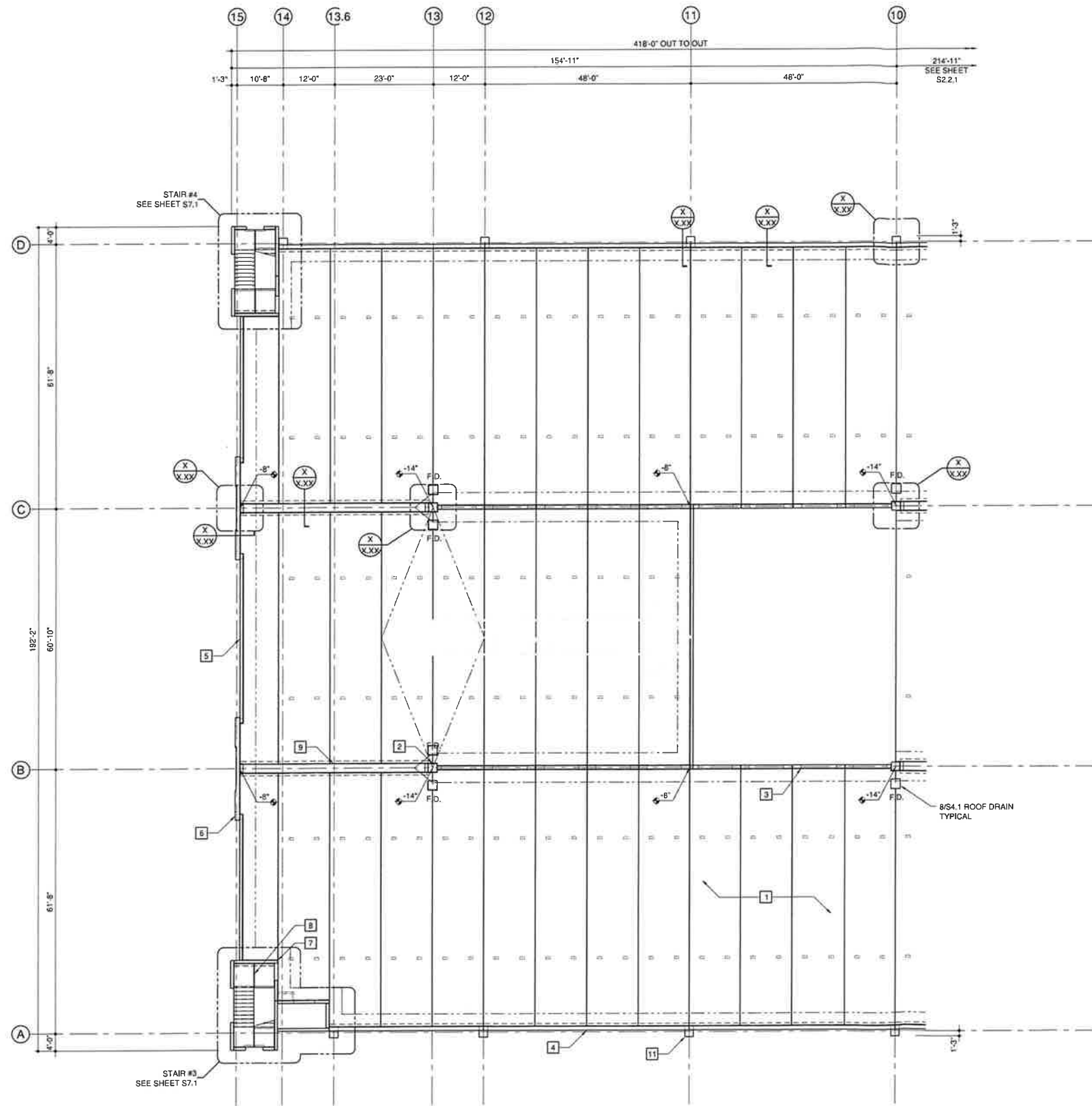
Craig Barrett 11464/PE  
 Professional Engineer  
 "To the best of my knowledge plans and specifications in these drawings comply with the minimum building codes and life safety standards of the 2003 International Building Codes"

Issued Preliminary For Information

5th LEVEL PLAN

**S2.3.1**

THESE DRAWINGS ARE THE SOLE PROPERTY OF LEAP ASSOCIATES INTERNATIONAL, INC. AND SHALL NOT BE REPRODUCED IN WHOLE OR IN PART BY ANY OTHER PARTY FOR REUSE ON ANY EXTENSION OF THIS PROJECT OR ANY OTHER PROJECT(S) WITHOUT THE EXPRESS WRITTEN PERMISSION OF LEAP ASSOCIATES INTERNATIONAL, INC.



**5th LEVEL DATUM = 49'-4"**  
 EL. 199'-0" = 0'-0"

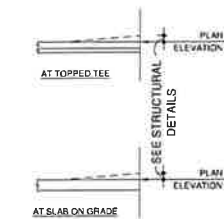
**ALL ELEVATION POINTS ARE BASED OFF OF THE FLOOR DATUM**

**SHEET NOTES:**

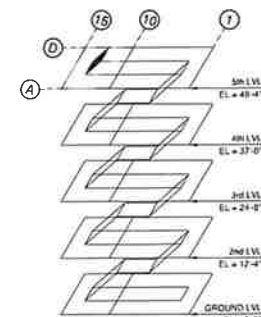
- 1) FOR GENERAL NOTES SEE SHEET S0.1
- 2) FOR FLOOR ELEVATIONS BETWEEN POINTS SHOWN USE STRAIGHT LINE INTERPOLATION
- 3) ALL SECTION / DETAILS CUTS AND STRUCTURAL INFORMATION SHOWN ON THIS PLAN ARE TYPICAL FOR ALL LEVELS U.L.O.
- 4) SEE SHEET S3.1 FOR COLUMN DETAILS
- 5) SEE SHEET S4.1 FOR DOUBLE TEE / BEAM DETAILS
- 6) REFER TO ISOMETRIC FOR FLOOR TO FLOOR ELEVATIONS
- 7) ELEVATIONS ALONG THE PERIMETER, WHERE NONE SHOWN EL = 0'-0"

**STRUCTURE NOTES:**

- 1) PRECAST DOUBLE TEE 28" DEEP x 12'-0" NOM. w/ 3" OF C.I.P. TOPPING
- 2) PRECAST INT. COLUMN 24" x 24" SEE DETAIL 10 / S3.1 FOR LIGHT POLE INFO.
- 3) PRECAST LITE WALL 10" x 8'-0"
- 4) PRECAST LOAD BRG SPANDREL 11" x 7'-1" w/ CONT. 8" LEDGE
- 5) PRECAST NON-LOAD BRG SPANDREL 8" x 7'-1"
- 6) PRECAST SHEAR WALL 10" x 24'-0"
- 7) PRECAST STAIR / ELEVATOR WALL 8" THK
- 8) PRECAST STAIR / LANDING
- 9) PRECAST INVERTED TEE BEAM 40" x 36 1/8" DP
- 10) PRECAST LEDGER BEAM 32" x 42 3/8" DP
- 11) PRECAST EXT. COLUMN 24" x 30"



**1) Plan Elevation Key**



Albert & Associates Architects  
 514 Main Street / P.O. Box 1567  
 Hattiesburg, MS 39401 / 39403  
 P. 601.544.1970 F. 601.544.4714  
 Architect

Finlo Construction  
 1118 Finlo Drive / P.O. Box 86  
 Hattiesburg, MS 39401 / 39403  
 P. 601.544.2000  
 General Contractor

**University of Southern Mississippi**  
 4th Street P/G Hattiesburg, MS

| No | Date     | Description   |
|----|----------|---------------|
| #  | ##/##/## | Describe Here |

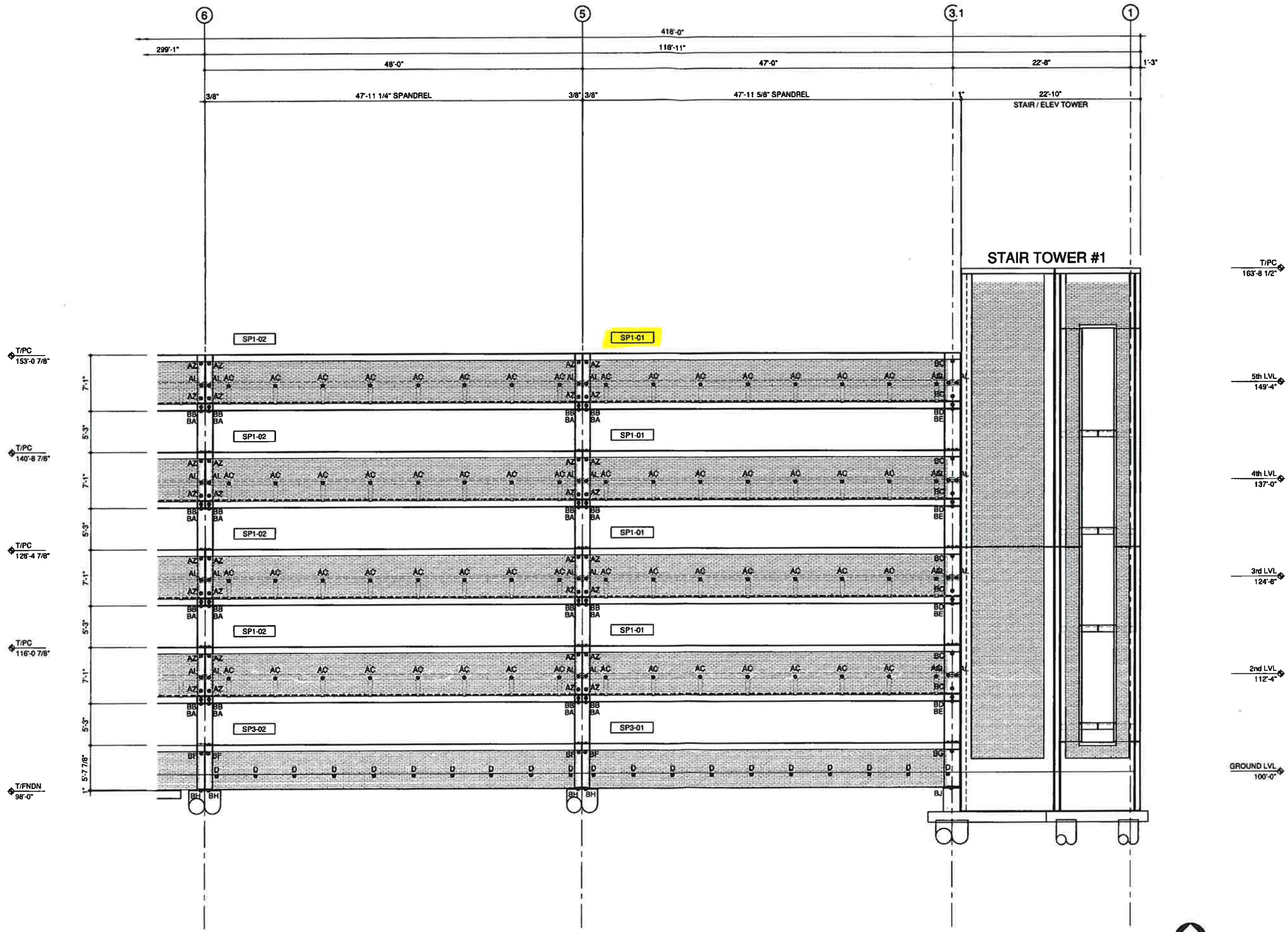
Craig Barrett 11464/PE  
 Professional Statement:  
 "To the best of my knowledge, plans and specifications in these drawings comply with the minimum building codes and life safety standards of the 2003 International Building Codes."

Issued Preliminary For Information

5th LEVEL PLAN

**S2.3.2**

THESE DRAWINGS ARE THE SOLE PROPERTY OF LEAP ASSOCIATES INTERNATIONAL, INC. AND SHALL NOT BE REPRODUCED IN WHOLE OR IN PART BY ANY OTHER PARTY FOR REUSE ON ANY EXTENSION OF THIS PROJECT OR ANY OTHER PROJECT(S) WITHOUT THE EXPRESS WRITTEN PERMISSION OF LEAP ASSOCIATES INTERNATIONAL, INC.



SOUTH ELEVATION ALONG GRID "A" - LOOKING NORTH



|   |                     |          |         |
|---|---------------------|----------|---------|
| 6 |                     |          |         |
| 5 |                     |          |         |
| 4 |                     |          |         |
| 3 |                     |          |         |
| 2 |                     |          |         |
| 1 | ISSUED FILE & FIELD | 10/10/20 | JAP PMV |
|   |                     |          | Drawn   |
|   |                     |          | Check   |

**LEAP ASSOCIATES INTERNATIONAL, INC.**  
 CONSULTING STRUCTURAL ENGINEERS  
 PO Box 10007 / Tampa, Florida 33617  
 Tampa (813) 288-9800 Denver (303) 452-0222  
 Client Project # M09-012 LEAP Project # FSPW0904  
 Drawing Creation Scale = 3/16" = 1'-0" (Printed Scale May Vary)

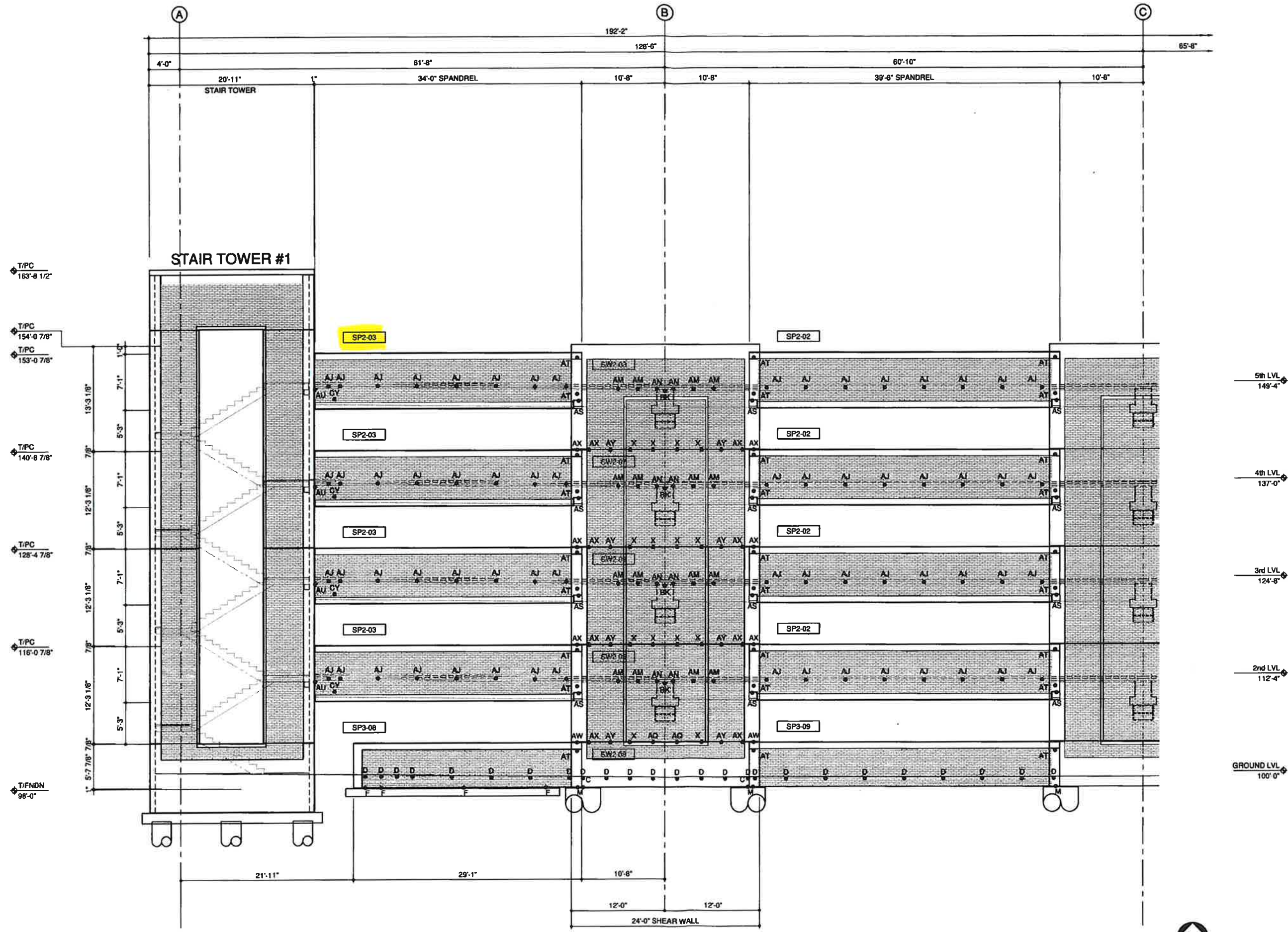
**University of Southern Mississippi**  
 4th Street Parking Garage  
 Hattiesburg, MS

Project: **F-S Prestress**  
 Client: **Albert & Associates** (Engineer)  
 Architect: **Albert & Associates** (Engineer)  
 Contractor: **F-S Prestress**

**NOTES:**  
 Connections located dimensionally are to the center of connection. See connection details for center of connection.  
 See 6.00 series sheets for product sections by mark number series.

Issued For Construction  
 File And Field

THESE DRAWINGS ARE THE SOLE PROPERTY OF LEAP ASSOCIATES INTERNATIONAL, INC. AND SHALL NOT BE REPRODUCED IN WHOLE OR IN PART BY ANY OTHER PARTY FOR REUSE ON ANY EXTENSION OF THIS PROJECT OR ANY OTHER PROJECT(S) WITHOUT THE EXPRESS WRITTEN PERMISSION OF LEAP ASSOCIATES INTERNATIONAL, INC.



EAST ELEVATION ALONG GRID "1" - LOOKING WEST

North  
Key Plan Exterior Elevation

|     |                     |          |       |       |  |
|-----|---------------------|----------|-------|-------|--|
| 6   |                     |          |       |       |  |
| 5   |                     |          |       |       |  |
| 4   |                     |          |       |       |  |
| 3   |                     |          |       |       |  |
| 2   |                     |          |       |       |  |
| 1   | ISSUED FILE & FIELD | 12/16/16 | JAP   | PMV   |  |
| No. | Description         | Date     | Drawn | Check |  |

**LEAP ASSOCIATES INTERNATIONAL, INC.**  
 CONSULTING STRUCTURAL ENGINEERS  
 PO Box 16007 / Tampa, Florida 33617  
 Tampa (813) 988-8870  
 Client Project # M09-012 LEAP Project # FSPM0904  
 Drawing Creation Scale = 3/16" = 1'-0" (Printed Scale May Vary)

**University of Southern Mississippi**  
 Hattiesburg, MS

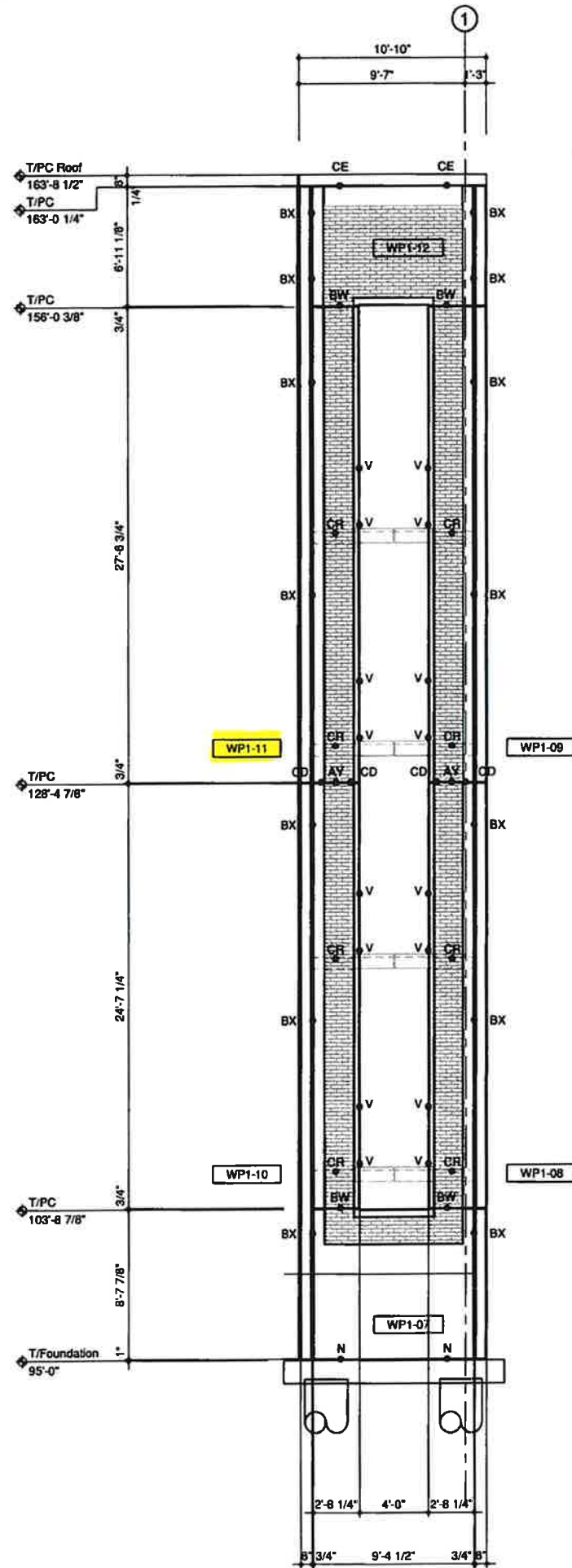
Project: 4th Street Parking Garage  
 Client: F-S Prestress  
 Architect: Albert S. Associates  
 Drawing Title: Exterior Elevation

**NOTES:**  
 Connections located dimensionally are to the center of connection. See connection details for center of connection.  
 See 6.00 series sheets for product sections by mark number series.

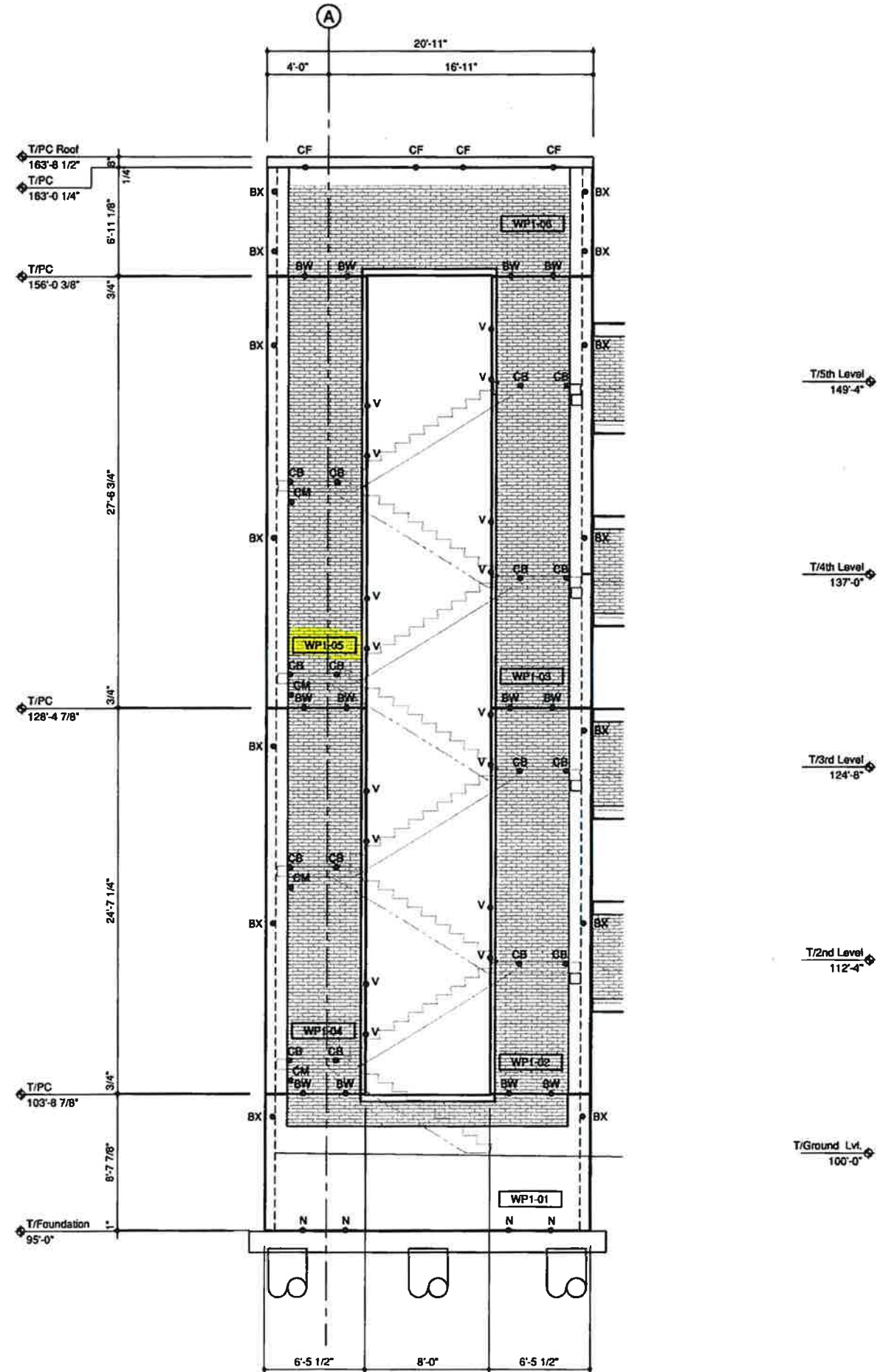
Issued For Construction  
 File And Field

Sheet Number  
**3.12**

THESE DRAWINGS ARE THE SOLE PROPERTY OF LEAP ASSOCIATES INTERNATIONAL, INC. AND SHALL NOT BE REPRODUCED IN WHOLE OR IN PART BY ANY OTHER PARTY FOR REUSE ON ANY PROJECT(S) WITHOUT THE EXPRESS WRITTEN PERMISSION OF LEAP ASSOCIATES INTERNATIONAL, INC.



Stair #1  
South Elevation 2



Stair #1  
East Elevation 1

|  |  |  |
|--|--|--|
| <br><b>LEAP ASSOCIATES INTERNATIONAL, INC.</b><br>CONSULTING STRUCTURAL ENGINEERS<br>PO Box 16007 / Tampa, Florida 33607<br>Tampa 813 988-8800 Denver (303) 426-0022                                       |  | No. 1<br>Date 10/09 JAP/PW<br>Description ISSUED FILE & FIELD<br>Drawing Scale 1/4" = 1'-0" (Printed Scale May Vary) |
| <b>University of Southern Mississippi</b><br>4th Street Parking Garage<br>Hattiesburg, MS  |  | Contractor *<br>Engineer *<br><b>F-S Prestress</b>   |
| <b>NOTES:</b><br>Connections located dimensionally are to the center of connection. See connection details for center of connection.<br>See 6.00 series sheets for product sections by mark number series. |  |  |
| <b>Issued For Construction</b><br>File And Field   |  | Sheet Number<br><b>5.01b</b>   |