

COURSE DELIVERY FORMATS

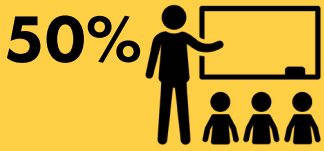
VIEW POLICY AT
[TINYURL.COM/AKK5JKCN](https://tinyurl.com/akk5jkcn)

FACE-TO-FACE



Courses offered in “face-to-face” format require students to be physically co-present with the instructor of record for the duration of the term, fulfilling contact minute guidelines.

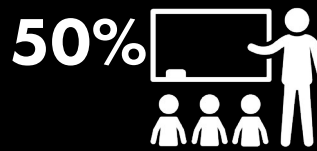
HYBRID ASYNCHRONOUS



Combines face-to-face sessions with online work without any required virtual meetings. These courses meet in person at a teaching site for a minimum of 50% of the required contact minutes, and the remaining course delivery is online and asynchronous.



HYBRID SYNCHRONOUS



These courses meet in person at a teaching site for a minimum of 50% of the required contact minutes, and the remaining course delivery is online during scheduled chat times.

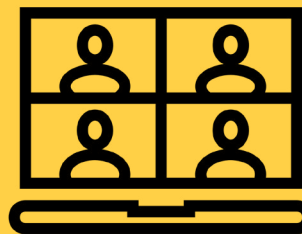


ONLINE (ASYNCHRONOUS)



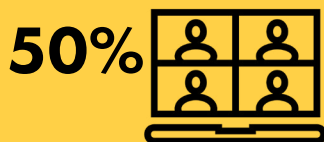
Online asynchronous courses do not require students to come to a physical campus at any point, and students are also not required to log in at any set time.

CHAT (SYNCHRONOUS)



Students log in and participate during a set, scheduled time noted on their class schedule. All contact minutes are fulfilled through virtual class meetings. Students in Chat courses are never required to physically come to a teaching site.

BLENDED ONLINE



Require students to meet online in synchronous, scheduled sessions for a minimum of the 50% of the required contact minutes. The remainder of course delivery is also online, but asynchronous. Students are never required to come to a physical USM location.



EXECUTIVE FORMAT



Condensed course delivery for non-traditional/professional learners. Typically includes a combination of online content delivery (asynchronous or synchronous) and weekend or other “intensive” in-person content. May be entirely online or entirely face-to-face. **This format is for programs, not individual courses.**