

University of Southern Mississippi - Auxiliary

118 College Drive, Hattiesburg, MS 39401

Dr. Rodney Bennett

AGENCY

ADDRESS

CHIEF EXECUTIVE OFFICER

	Actual Expenses June 30,2020	Estimated Expenses June 30,2021	Requested For June 30,2022	Requested Over/(Under) Estimated	
				AMOUNT	PERCENT
<b>I. A. PERSONAL SERVICES</b>					
1. Salaries, Wages & Fringe Benefits (Base)	19,154,573	20,945,355	20,945,355		
a. Additional Compensation					
b. Proposed Vacancy Rate (Dollar Amount)					
c. Per Diem					
<b>Total Salaries, Wages &amp; Fringe Benefits</b>	<b>19,154,573</b>	<b>20,945,355</b>	<b>20,945,355</b>		
2. Travel					
a. Travel & Subsistence (In-State)	421,967	573,675	573,675		
b. Travel & Subsistence (Out-Of-State)	2,172,118	2,940,083	2,940,083		
c. Travel & Subsistence (Out-Of-Country)	45,508	71,709	71,709		
<b>Total Travel</b>	<b>2,639,593</b>	<b>3,585,467</b>	<b>3,585,467</b>		
<b>B. CONTRACTUAL SERVICE S (Schedule B)</b>					
a. Tuition, Rewards & Awards	6,520,617	6,520,617	6,520,617		
b. Communications, Transportation & Utilities	3,742,233	3,742,233	3,742,233		
c. Public Information	83,748	83,748	83,748		
d. Rents	251,820	251,820	251,820		
e. Repairs & Service	1,973,253	1,973,253	1,973,253		
f. Fees, Professional & Other Services	984,005	984,005	984,005		
g. Other Contractual Services	2,391,604	2,391,604	2,391,604		
h. Data Processing	249,262	249,262	249,262		
i. Other	2,354,338	3,051,742	3,051,742		
<b>Total Contractual Services</b>	<b>18,550,880</b>	<b>19,248,284</b>	<b>19,248,284</b>		
<b>C. COMMODITIES (Schedule C)</b>					
a. Maintenance & Construction Materials & Supplies	324,006	324,006	324,006		
b. Printing & Office Supplies & Materials	493,742	493,742	493,742		
c. Equipment, Repair Parts, Supplies & Accessories	442,759	442,759	442,759		
d. Professional & Scientific Supplies & Materials	144,678	144,678	144,678		
e. Other Supplies & Materials	10,741,375	12,290,431	12,290,431		
<b>Total Commodities</b>	<b>12,146,560</b>	<b>13,695,616</b>	<b>13,695,616</b>		
<b>D. CAPITAL OUTLAY</b>					
<b>1. Total Other Than Equipment (Schedule D-1)</b>		94,090	94,090		
<b>2. Equipment (Schedule D-2)</b>					
b. Road Machinery, Farm & Other Working Equipment	70,405	70,405	70,405		
c. Office Machines, Furniture, Fixtures & Equipment					
d. IS Equipment (Data Processing & Telecommunications)					
e. Equipment - Lease Purchase					
f. Other Equipment	30,415	28,245	28,245		
<b>Total Equipment (Schedule D-2)</b>	<b>100,820</b>	<b>98,650</b>	<b>98,650</b>		
<b>3. Vehicles (Schedule D-3)</b>					
<b>4. Wireless Comm. Devices (Schedule D-4)</b>					
<b>E. SUBSIDIES, LOANS &amp; GRANTS (Schedule E)</b>	<b>11,598,216</b>	<b>11,885,275</b>	<b>11,885,275</b>		
<b>TOTAL EXPENDITURES</b>	<b>64,190,642</b>	<b>69,552,737</b>	<b>69,552,737</b>		
<b>II. BUDGET TO BE FUNDED AS FOLLOWS:</b>					
Cash Balance-Unencumbered					
General Fund Appropriation (Enter General Fund Lapse Below)					
State Support Special Funds					
Federal Funds _____ Other Special Funds (Specify) _____					
Sales & Services	64,190,642	69,552,737	69,552,737		
Less: Estimated Cash Available Next Fiscal Period					
<b>TOTAL FUNDS (equals Total Expenditures above)</b>	<b>64,190,642</b>	<b>69,552,737</b>	<b>69,552,737</b>		
GENERAL FUND LAPSE					
<b>III: PERSONNEL DATA</b>					
Number of Positions Authorized in Appropriation Bill	a.) Perm Full	397	391	391	
	b.) Perm Part				
	c.) T-L Full				
	d.) T-L Part				
Average Annual Vacancy Rate (Percentage)	a.) Perm Full				
	b.) Perm Part				
	c.) T-L Full				
	d.) T-L Part				

Approved by: Dr. Rodney D. Bennett  
Official of Board of Commission

Submitted by: Lynn L. Smith

Date: 8/5/2020 3:27 PM

Budget Officer: Lynn Smith / Lynn.smith@usm.edu

Phone Number: 601.266.4632

Title: Director of Fiscal Planning

REQUEST BY FUNDING SOURCE

Name of Agency : University of Southern Mississippi - Auxiliary

Specify Funding Sources As Shown Below	FY 2020 Actual Amount	% of Line Item	% of Total Budget	FY 2021 Estimated Amount	% of Line Item	% of Total Budget	FY 2022 Requested Amount	% of Line Item	% of Total Budget
1. General _____ State Support Special (Specify) _____									
2. Budget Contingency Fund									
3. Education Enhancement Fund									
4. Health Care Expendable Fund									
5. Tobacco Control Fund									
6. Capital Expense Fund									
7. Working Cash Stabilization Reserve Fund									
8. BP Settlement Fund									
9. Gulf Coast Restoration Fund									
10. Back To Business Mississippi Grant Fund									
11. MS COVID-19 Relief Payment Fund									
12. DFA CARES Act COVID-19 Fund									
13. MS Tourism Recovery Fund									
14. MS Nonprofit Museums Recovery Fund									
15. Equity in Distance Learning Fund									
16. Postsecondary Education COVID-19 Relief Grant Fund									
17. Independent Schools' COVID-19 Assistance Grant Fund									
18. MS Pandemic Response Broadband Availability Grant Program Fund									
19. MS Emergency Management Agency COVID-19 Fund									
20. MS Electric Cooperatives Broadband COVID-19 Grant Program Fund									
21. COVID-19 Broadband Provider Grant Program Fund									
22. Federal _____ Other Special (Specify) _____									
23. Sales & Services	19,154,573	100.00		20,945,355	100.00		20,945,355	100.00	
24.									
25.									
26.									
<b>Total Salaries</b>	<b>19,154,573</b>		<b>29.84%</b>	<b>20,945,355</b>		<b>30.11%</b>	<b>20,945,355</b>		<b>30.11%</b>
1. General _____ State Support Special (Specify) _____									
2. Budget Contingency Fund									
3. Education Enhancement Fund									
4. Health Care Expendable Fund									
5. Tobacco Control Fund									
6. Capital Expense Fund									
7. Working Cash Stabilization Reserve Fund									
8. BP Settlement Fund									
9. Gulf Coast Restoration Fund									
10. Back To Business Mississippi Grant Fund									
11. MS COVID-19 Relief Payment Fund									
12. DFA CARES Act COVID-19 Fund									
13. MS Tourism Recovery Fund									
14. MS Nonprofit Museums Recovery Fund									
15. Equity in Distance Learning Fund									
16. Postsecondary Education COVID-19 Relief Grant Fund									
17. Independent Schools' COVID-19 Assistance Grant Fund									
18. MS Pandemic Response Broadband Availability Grant Program Fund									
19. MS Emergency Management Agency COVID-19 Fund									
20. MS Electric Cooperatives Broadband COVID-19 Grant Program Fund									
21. COVID-19 Broadband Provider Grant Program Fund									
22. Federal _____ Other Special (Specify) _____									
23. Sales & Services	2,639,593	100.00		3,585,467	100.00		3,585,467	100.00	
24.									
25.									
26.									
<b>Total Travel</b>	<b>2,639,593</b>		<b>4.11%</b>	<b>3,585,467</b>		<b>5.16%</b>	<b>3,585,467</b>		<b>5.16%</b>

REQUEST BY FUNDING SOURCE

Name of Agency : University of Southern Mississippi - Auxiliary

Specify Funding Sources As Shown Below	FY 2020 Actual Amount	% of Line Item	% of Total Budget	FY 2021 Estimated Amount	% of Line Item	% of Total Budget	FY 2022 Requested Amount	% of Line Item	% of Total Budget
1. General _____ State Support Special (Specify) _____									
2. Budget Contingency Fund									
3. Education Enhancement Fund									
4. Health Care Expendable Fund									
5. Tobacco Control Fund									
6. Capital Expense Fund									
7. Working Cash Stabilization Reserve Fund									
8. BP Settlement Fund									
9. Gulf Coast Restoration Fund									
10. Back To Business Mississippi Grant Fund									
11. MS COVID-19 Relief Payment Fund									
12. DFA CARES Act COVID-19 Fund									
13. MS Tourism Recovery Fund									
14. MS Nonprofit Museums Recovery Fund									
15. Equity in Distance Learning Fund									
16. Postsecondary Education COVID-19 Relief Grant Fund									
17. Independent Schools' COVID-19 Assistance Grant Fund									
18. MS Pandemic Response Broadband Availability Grant Program Fund									
19. MS Emergency Management Agency COVID-19 Fund									
20. MS Electric Cooperatives Broadband COVID-19 Grant Program Fund									
21. COVID-19 Broadband Provider Grant Program Fund									
22. Federal _____ Other Special (Specify) _____									
23. Sales & Services	18,550,880	100.00		19,248,284	100.00		19,248,284	100.00	
24.									
25.									
26.									
<b>Total Contractual</b>	<b>18,550,880</b>		<b>28.90%</b>	<b>19,248,284</b>		<b>27.67%</b>	<b>19,248,284</b>		<b>27.67%</b>
1. General _____ State Support Special (Specify) _____									
2. Budget Contingency Fund									
3. Education Enhancement Fund									
4. Health Care Expendable Fund									
5. Tobacco Control Fund									
6. Capital Expense Fund									
7. Working Cash Stabilization Reserve Fund									
8. BP Settlement Fund									
9. Gulf Coast Restoration Fund									
10. Back To Business Mississippi Grant Fund									
11. MS COVID-19 Relief Payment Fund									
12. DFA CARES Act COVID-19 Fund									
13. MS Tourism Recovery Fund									
14. MS Nonprofit Museums Recovery Fund									
15. Equity in Distance Learning Fund									
16. Postsecondary Education COVID-19 Relief Grant Fund									
17. Independent Schools' COVID-19 Assistance Grant Fund									
18. MS Pandemic Response Broadband Availability Grant Program Fund									
19. MS Emergency Management Agency COVID-19 Fund									
20. MS Electric Cooperatives Broadband COVID-19 Grant Program Fund									
21. COVID-19 Broadband Provider Grant Program Fund									
22. Federal _____ Other Special (Specify) _____									
23. Sales & Services	12,146,560	100.00		13,695,616	100.00		13,695,616	100.00	
24.									
25.									
26.									
<b>Total Commodities</b>	<b>12,146,560</b>		<b>18.92%</b>	<b>13,695,616</b>		<b>19.69%</b>	<b>13,695,616</b>		<b>19.69%</b>

REQUEST BY FUNDING SOURCE

Name of Agency : University of Southern Mississippi - Auxiliary

Specify Funding Sources As Shown Below	FY 2020 Actual Amount	% of Line Item	% of Total Budget	FY 2021 Estimated Amount	% of Line Item	% of Total Budget	FY 2022 Requested Amount	% of Line Item	% of Total Budget
1. General _____ State Support Special (Specify) _____									
2. Budget Contingency Fund									
3. Education Enhancement Fund									
4. Health Care Expendable Fund									
5. Tobacco Control Fund									
6. Capital Expense Fund									
7. Working Cash Stabilization Reserve Fund									
8. BP Settlement Fund									
9. Gulf Coast Restoration Fund									
10. Back To Business Mississippi Grant Fund									
11. MS COVID-19 Relief Payment Fund									
12. DFA CARES Act COVID-19 Fund									
13. MS Tourism Recovery Fund									
14. MS Nonprofit Museums Recovery Fund									
15. Equity in Distance Learning Fund									
16. Postsecondary Education COVID-19 Relief Grant Fund									
17. Independent Schools' COVID-19 Assistance Grant Fund									
18. MS Pandemic Response Broadband Availability Grant Program Fund									
19. MS Emergency Management Agency COVID-19 Fund									
20. MS Electric Cooperatives Broadband COVID-19 Grant Program Fund									
21. COVID-19 Broadband Provider Grant Program Fund									
22. Federal _____ Other Special (Specify) _____									
23. Sales & Services				94,090	100.00		94,090	100.00	
24.									
25.									
26.									
<b>Total Capital Other Than Equipment</b>				<b>94,090</b>		<b>0.14%</b>	<b>94,090</b>		<b>0.14%</b>
1. General _____ State Support Special (Specify) _____									
2. Budget Contingency Fund									
3. Education Enhancement Fund									
4. Health Care Expendable Fund									
5. Tobacco Control Fund									
6. Capital Expense Fund									
7. Working Cash Stabilization Reserve Fund									
8. BP Settlement Fund									
9. Gulf Coast Restoration Fund									
10. Back To Business Mississippi Grant Fund									
11. MS COVID-19 Relief Payment Fund									
12. DFA CARES Act COVID-19 Fund									
13. MS Tourism Recovery Fund									
14. MS Nonprofit Museums Recovery Fund									
15. Equity in Distance Learning Fund									
16. Postsecondary Education COVID-19 Relief Grant Fund									
17. Independent Schools' COVID-19 Assistance Grant Fund									
18. MS Pandemic Response Broadband Availability Grant Program Fund									
19. MS Emergency Management Agency COVID-19 Fund									
20. MS Electric Cooperatives Broadband COVID-19 Grant Program Fund									
21. COVID-19 Broadband Provider Grant Program Fund									
22. Federal _____ Other Special (Specify) _____									
23. Sales & Services	100,820	100.00		98,650	100.00		98,650	100.00	
24.									
25.									
26.									
<b>Total Capital Equipment</b>	<b>100,820</b>		<b>0.16%</b>	<b>98,650</b>		<b>0.14%</b>	<b>98,650</b>		<b>0.14%</b>

REQUEST BY FUNDING SOURCE

Name of Agency : University of Southern Mississippi - Auxiliary

Specify Funding Sources As Shown Below	FY 2020 Actual Amount	% of Line Item	% of Total Budget	FY 2021 Estimated Amount	% of Line Item	% of Total Budget	FY 2022 Requested Amount	% of Line Item	% of Total Budget
1. General _____ State Support Special (Specify) _____									
2. Budget Contingency Fund									
3. Education Enhancement Fund									
4. Health Care Expendable Fund									
5. Tobacco Control Fund									
6. Capital Expense Fund									
7. Working Cash Stabilization Reserve Fund									
8. BP Settlement Fund									
9. Gulf Coast Restoration Fund									
10. Back To Business Mississippi Grant Fund									
11. MS COVID-19 Relief Payment Fund									
12. DFA CARES Act COVID-19 Fund									
13. MS Tourism Recovery Fund									
14. MS Nonprofit Museums Recovery Fund									
15. Equity in Distance Learning Fund									
16. Postsecondary Education COVID-19 Relief Grant Fund									
17. Independent Schools' COVID-19 Assistance Grant Fund									
18. MS Pandemic Response Broadband Availability Grant Program Fund									
19. MS Emergency Management Agency COVID-19 Fund									
20. MS Electric Cooperatives Broadband COVID-19 Grant Program Fund									
21. COVID-19 Broadband Provider Grant Program Fund									
22. Federal _____ Other Special (Specify) _____									
23. Sales & Services									
24.									
25.									
26.									
<b>Total Vehicles</b>									
1. General _____ State Support Special (Specify) _____									
2. Budget Contingency Fund									
3. Education Enhancement Fund									
4. Health Care Expendable Fund									
5. Tobacco Control Fund									
6. Capital Expense Fund									
7. Working Cash Stabilization Reserve Fund									
8. BP Settlement Fund									
9. Gulf Coast Restoration Fund									
10. Back To Business Mississippi Grant Fund									
11. MS COVID-19 Relief Payment Fund									
12. DFA CARES Act COVID-19 Fund									
13. MS Tourism Recovery Fund									
14. MS Nonprofit Museums Recovery Fund									
15. Equity in Distance Learning Fund									
16. Postsecondary Education COVID-19 Relief Grant Fund									
17. Independent Schools' COVID-19 Assistance Grant Fund									
18. MS Pandemic Response Broadband Availability Grant Program Fund									
19. MS Emergency Management Agency COVID-19 Fund									
20. MS Electric Cooperatives Broadband COVID-19 Grant Program Fund									
21. COVID-19 Broadband Provider Grant Program Fund									
22. Federal _____ Other Special (Specify) _____									
23. Sales & Services									
24.									
25.									
26.									
<b>Total Wireless Communication Devs.</b>									

REQUEST BY FUNDING SOURCE

Name of Agency : University of Southern Mississippi - Auxiliary

Specify Funding Sources As Shown Below	FY 2020 Actual Amount	% of Line Item	% of Total Budget	FY 2021 Estimated Amount	% of Line Item	% of Total Budget	FY 2022 Requested Amount	% of Line Item	% of Total Budget
1. General _____ State Support Special (Specify) _____									
2. Budget Contingency Fund									
3. Education Enhancement Fund									
4. Health Care Expendable Fund									
5. Tobacco Control Fund									
6. Capital Expense Fund									
7. Working Cash Stabilization Reserve Fund									
8. BP Settlement Fund									
9. Gulf Coast Restoration Fund									
10. Back To Business Mississippi Grant Fund									
11. MS COVID-19 Relief Payment Fund									
12. DFA CARES Act COVID-19 Fund									
13. MS Tourism Recovery Fund									
14. MS Nonprofit Museums Recovery Fund									
15. Equity in Distance Learning Fund									
16. Postsecondary Education COVID-19 Relief Grant Fund									
17. Independent Schools' COVID-19 Assistance Grant Fund									
18. MS Pandemic Response Broadband Availability Grant Program Fund									
19. MS Emergency Management Agency COVID-19 Fund									
20. MS Electric Cooperatives Broadband COVID-19 Grant Program Fund									
21. COVID-19 Broadband Provider Grant Program Fund									
22. Federal _____ Other Special (Specify) _____									
23. Sales & Services	11,598,216	100.00		11,885,275	100.00		11,885,275	100.00	
24.									
25.									
26.									
<b>Total Subsidies</b>	<b>11,598,216</b>		<b>18.07%</b>	<b>11,885,275</b>		<b>17.09%</b>	<b>11,885,275</b>		<b>17.09%</b>
1. General _____ State Support Special (Specify) _____									
2. Budget Contingency Fund									
3. Education Enhancement Fund									
4. Health Care Expendable Fund									
5. Tobacco Control Fund									
6. Capital Expense Fund									
7. Working Cash Stabilization Reserve Fund									
8. BP Settlement Fund									
9. Gulf Coast Restoration Fund									
10. Back To Business Mississippi Grant Fund									
11. MS COVID-19 Relief Payment Fund									
12. DFA CARES Act COVID-19 Fund									
13. MS Tourism Recovery Fund									
14. MS Nonprofit Museums Recovery Fund									
15. Equity in Distance Learning Fund									
16. Postsecondary Education COVID-19 Relief Grant Fund									
17. Independent Schools' COVID-19 Assistance Grant Fund									
18. MS Pandemic Response Broadband Availability Grant Program Fund									
19. MS Emergency Management Agency COVID-19 Fund									
20. MS Electric Cooperatives Broadband COVID-19 Grant Program Fund									
21. COVID-19 Broadband Provider Grant Program Fund									
22. Federal _____ Other Special (Specify) _____									
23. Sales & Services	64,190,642	100.00		69,552,737	100.00		69,552,737	100.00	
24.									
25.									
26.									
<b>TOTAL</b>	<b>64,190,642</b>		<b>100.00%</b>	<b>69,552,737</b>		<b>100.00%</b>	<b>69,552,737</b>		<b>100.00%</b>

**SPECIAL FUNDS DETAIL**

University of Southern Mississippi - Auxiliary (268-01)

Name of Agency

<b>S. STATE SUPPORT SPECIAL FUNDS</b>		<b>(1) Actual Revenues FY 2020</b>	<b>(2) Estimated Revenues FY 2021</b>	<b>(3) Requested Revenues FY 2022</b>
<b>Source (Fund Number)</b>	<b>Detailed Description of Source</b>			
Budget Contingency Fund	BCF - Budget Contingency			
Education Enhancement Fund	EEF - Education Enhancement Fund			
Health Care Expendable Fund	HCEF - Health Care Expendable Fund			
Tobacco Control Fund	TCF - Tobacco Control Fund			
Capital Expense Fund	CEF - Capital Expense Fund			
Working Cash Stabilization Reserve Fund	WCSRF - Working Cash Stabilization Reserve Fund			
BP Settlement Fund	BPSF - BP Settlement Fund			
Gulf Coast Restoration Fund	GCRF - Gulf Coast Restoration Fund			
Back To Business Mississippi Grant Fund	BTBMGF - Back To Business Mississippi Grant Fund			
MS COVID-19 Relief Payment Fund	MCRPF - MS COVID-19 Relief Payment Fund			
DFA CARES Act COVID-19 Fund	DCACF - DFA CARES Act COVID-19 Fund			
MS Tourism Recovery Fund	MTRF - MS Tourism Recovery Fund			
MS Nonprofit Museums Recovery Fund	MNMRF - MS Nonprofit Museums Recovery Fund			
Equity in Distance Learning Fund	EIDLF - Equity in Distance Learning Fund			
Postsecondary Education COVID-19 Relief Grant Fund	PECMRGF - Postsecondary Education COVID-19 Relief Grant Fund			
Independent Schools' COVID-19 Assistance Grant Fund	ISCAGF - Independent Schools' COVID-19 Assistance Grant Fund			
MS Pandemic Response Broadband Availability Grant Program Fund	MPRBAGPF - MS Pandemic Response Broadband Availability Grant Program Fund			
MS Emergency Management Agency COVID-19 Fund	MEMACF - MS Emergency Management Agency COVID-19 Fund			
MS Electric Cooperatives Broadband COVID-19 Grant Program Fund	MECBCGPF - MS Electric Cooperatives Broadband COVID-19 Grant Program Fund			
COVID-19 Broadband Provider Grant Program Fund	CBPGPF - COVID-19 Broadband Provider Grant Program Fund			
<b>State Support Special Fund TOTAL</b>				
STATE SUPPORT SPECIAL FUND LAPSE				

<b>A. FEDERAL FUNDS *</b>		<b>Percentage Match Requirement</b>	<b>(1) Actual Revenues FY 2020</b>	<b>(2) Estimated Revenues FY 2021</b>	<b>(3) Requested Revenues FY 2022</b>
<b>Source (Fund Number)</b>	<b>Detailed Description of Source</b>	<b>FY 2021 FY 2022</b>			
	Cash Balance-Unencumbered				
<b>Federal Fund TOTAL</b>					

<b>B. OTHER SPECIAL FUNDS (NON-FED'L)</b>		<b>(1) Actual Revenues FY 2020</b>	<b>(2) Estimated Revenues FY 2021</b>	<b>(3) Requested Revenues FY 2022</b>
<b>Source (Fund Number)</b>	<b>Detailed Description of Source</b>			
	Cash Balance-Unencumbered			
Sales & Services ()		64,190,642	69,552,737	69,552,737
<b>Other Special Fund TOTAL</b>		<b>64,190,642</b>	<b>69,552,737</b>	<b>69,552,737</b>

<b>SECTIONS S + A + B TOTAL</b>		<b>64,190,642</b>	<b>69,552,737</b>	<b>69,552,737</b>
---------------------------------	--	-------------------	-------------------	-------------------

**SPECIAL FUNDS DETAIL**

University of Southern Mississippi - Auxiliary (268-01)

Name of Agency

<b>C. TREASURY FUND/BANK ACCOUNTS *</b>			<b>(1)</b>	<b>(2)</b>	<b>(3)</b>
<b>Name of Fund/Account</b>	<b>Fund/Account Number</b>	<b>Name of Bank (If Applicable)</b>	<b>Reconciled Balance as of 6/30/20</b>	<b>Balance as of 6/30/21</b>	<b>Balance as of 6/30/22</b>
See Hattiesburg MBR					

\* Any non-federal funds that have restricted uses must be identified and narrative of restrictions attached.



**NARRATIVE OF SPECIAL FUNDS DETAIL AND TREASURY  
FUND/BANK ACCOUNTS**

University of Southern Mississippi - Auxiliary (268-01)

---

Name of Agency

**STATE SUPPORT SPECIAL FUNDS**

NA

**FEDERAL FUNDS**

NA

**OTHER SPECIAL FUNDS**

The University of Southern Mississippi's auxiliary enterprises are self-supporting entities. The larger auxiliaries include Residence Life, Moffitt Health Center, Recreational Sports, Intercollegiate Athletics, and Parking and Transit Services. These entities generate revenues from sales and services to the university community.

**TREASURY FUND / BANK**

See Hattiesburg MBR

**CONTINUATION AND EXPANDED TOTAL REQUEST**

University of Southern Mississippi - Auxiliary (268-01)

SUMMARY OF ALL PROGRAMS

Name of Agency

Program

	FY 2020 Actual				
	(1) General	(2) State Support Special	(3) Federal	(4) Other Special	(5) Total
Salaries,Wages & Fringe				19,154,573	19,154,573
Travel				2,639,593	2,639,593
Contractual Services				18,550,880	18,550,880
Commodities				12,146,560	12,146,560
Other Than Equipment					
Equipment				100,820	100,820
Vehicles					
Wireless Communication Devices					
Subsidies, Loans & Grants				11,598,216	11,598,216
<b>Total</b>				<b>64,190,642</b>	<b>64,190,642</b>
No. of Positions (FTE)				397.00	397.00

	FY 2021 Estimated				
	(6) General	(7) State Support Special	(8) Federal	(9) Other Special	(10) Total
Salaries,Wages & Fringe				20,945,355	20,945,355
Travel				3,585,467	3,585,467
Contractual Services				19,248,284	19,248,284
Commodities				13,695,616	13,695,616
Other Than Equipment				94,090	94,090
Equipment				98,650	98,650
Vehicles					
Wireless Communication Devices					
Subsidies, Loans & Grants				11,885,275	11,885,275
<b>Total</b>				<b>69,552,737</b>	<b>69,552,737</b>
No. of Positions (FTE)				391.00	391.00

	FY 2022 Increase/Decrease for Continuation				
	(11) General	(12) State Support Special	(13) Federal	(14) Other Special	(15) Total
Salaries,Wages & Fringe					
Travel					
Contractual Services					
Commodities					
Other Than Equipment					
Equipment					
Vehicles					
Wireless Communication Devices					
Subsidies, Loans & Grants					
<b>Total</b>					
No. of Positions (FTE)					

Note: FY2022 Total Request = FY2021 Estimated + FY2022 Incr(Decr) for Continuation + FY2022 Expansion/Reduction of Existing Activities + FY2022 New Activities.

**CONTINUATION AND EXPANDED TOTAL REQUEST**

University of Southern Mississippi - Auxiliary (268-01)

SUMMARY OF ALL PROGRAMS

Name of Agency	Program				
	<b>FY 2022 Expansion/Reduction of Existing Activities</b>				
	(16) General	(17) State Support Special	(18) Federal	(19) Other Special	(20) Total
Salaries,Wages & Fringe					
Travel					
Contractual Services					
Commodities					
Other Than Equipment					
Equipment					
Vehicles					
Wireless Communication Devices					
Subsidies, Loans & Grants					
<b>Total</b>					
No. of Positions (FTE)					

	<b>FY 2022 New Activities (*)</b>				
	(21) General	(22) State Support Special	(23) Federal	(24) Other Special	(25) Total
Salaries,Wages & Fringe					
Travel					
Contractual Services					
Commodities					
Other Than Equipment					
Equipment					
Vehicles					
Wireless Communication Devices					
Subsidies, Loans & Grants					
<b>Total</b>					
No. of Positions (FTE)					

	<b>FY 2022 Total Request</b>				
	(26) General	(27) State Support Special	(28) Federal	(29) Other Special	(30) Total
Salaries,Wages & Fringe				20,945,355	20,945,355
Travel				3,585,467	3,585,467
Contractual Services				19,248,284	19,248,284
Commodities				13,695,616	13,695,616
Other Than Equipment				94,090	94,090
Equipment				98,650	98,650
Vehicles					
Wireless Communication Devices					
Subsidies, Loans & Grants				11,885,275	11,885,275
<b>Total</b>				<b>69,552,737</b>	<b>69,552,737</b>
No. of Positions (FTE)				391.00	391.00

Note: FY2022 Total Request = FY2021 Estimated + FY2022 Incr(Decr) for Continuation + FY2022 Expansion/Reduction of Existing Activities + FY2022 New Activities.

**SUMMARY OF PROGRAMS  
FORM MBR-1-03sum**

University of Southern Mississippi - Auxiliary (268-01)

Name of Agency

FUNDING REQUESTED FISCAL YEAR 2022

	PROGRAM	GENERAL	ST. SUPP. SPECIAL	FEDERAL	OTHER SPECIAL	TOTAL
1.	Auxiliary Enterprises				69,552,737	69,552,737
	Summary of All Programs				69,552,737	69,552,737

CONTINUATION AND EXPANDED REQUEST

Program 1 of 1  
Auxiliary Enterprises

University of Southern Mississippi - Auxiliary (268-01)

Name of Agency	FY 2020 Actual				
	(1) General	(2) State Support Special	(3) Federal	(4) Other Special	(5) Total
Salaries,Wages & Fringe				19,154,573	19,154,573
Travel				2,639,593	2,639,593
Contractual Services				18,550,880	18,550,880
Commodities				12,146,560	12,146,560
Other Than Equipment					
Equipment				100,820	100,820
Vehicles					
Wireless Communication Devices					
Subsidies, Loans & Grants				11,598,216	11,598,216
<b>Total</b>				<b>64,190,642</b>	<b>64,190,642</b>
No. of Positions (FTE)				397.00	397.00

	FY 2021 Estimated				
	(6) General	(7) State Support Special	(8) Federal	(9) Other Special	(10) Total
Salaries,Wages & Fringe				20,945,355	20,945,355
Travel				3,585,467	3,585,467
Contractual Services				19,248,284	19,248,284
Commodities				13,695,616	13,695,616
Other Than Equipment				94,090	94,090
Equipment				98,650	98,650
Vehicles					
Wireless Communication Devices					
Subsidies, Loans & Grants				11,885,275	11,885,275
<b>Total</b>				<b>69,552,737</b>	<b>69,552,737</b>
No. of Positions (FTE)				391.00	391.00

	FY 2022 Increase/Decrease for Continuation				
	(11) General	(12) State Support Special	(13) Federal	(14) Other Special	(15) Total
Salaries,Wages & Fringe					
Travel					
Contractual Services					
Commodities					
Other Than Equipment					
Equipment					
Vehicles					
Wireless Communication Devices					
Subsidies, Loans & Grants					
<b>Total</b>					
No. of Positions (FTE)					

Note: FY2022 Total Request = FY2021 Estimated + FY2022 Incr(Decr) for Continuation + FY2022 Expansion/Reduction of Existing Activities + FY2022 New Activities.

CONTINUATION AND EXPANDED REQUEST

Program 1 of 1  
Auxiliary Enterprises

University of Southern Mississippi - Auxiliary (268-01)

Name of Agency	FY 2022 Expansion/Reduction of Existing Activities				
	(16) General	(17) State Support Special	(18) Federal	(19) Other Special	(20) Total
Salaries,Wages & Fringe					
Travel					
Contractual Services					
Commodities					
Other Than Equipment					
Equipment					
Vehicles					
Wireless Communication Devices					
Subsidies, Loans & Grants					
<b>Total</b>					
No. of Positions (FTE)					

	FY 2022 New Activities (*)				
	(21) General	(22) State Support Special	(23) Federal	(24) Other Special	(25) Total
Salaries,Wages & Fringe					
Travel					
Contractual Services					
Commodities					
Other Than Equipment					
Equipment					
Vehicles					
Wireless Communication Devices					
Subsidies, Loans & Grants					
<b>Total</b>					
No. of Positions (FTE)					

	FY 2022 Total Request				
	(26) General	(27) State Support Special	(28) Federal	(29) Other Special	(30) Total
Salaries,Wages & Fringe				20,945,355	20,945,355
Travel				3,585,467	3,585,467
Contractual Services				19,248,284	19,248,284
Commodities				13,695,616	13,695,616
Other Than Equipment				94,090	94,090
Equipment				98,650	98,650
Vehicles					
Wireless Communication Devices					
Subsidies, Loans & Grants				11,885,275	11,885,275
<b>Total</b>				<b>69,552,737</b>	<b>69,552,737</b>
No. of Positions (FTE)				391.00	391.00

Note: FY2022 Total Request = FY2021 Estimated + FY2022 Incr(Decr) for Continuation + FY2022 Expansion/Reduction of Existing Activities + FY2022 New Activities.

**PROGRAM DECISION UNITS**

University of Southern Mississippi - Auxiliary

1 - Auxiliary Enterprises

Name of Agency

Program Name

	A	B	C	D	E			
<b>EXPENDITURES</b>	FY 2021 Appropriated	Escalations By DFA	Non-Recurring Items	Total Funding Change	FY 2022 Total Request			
<b>SALARIES</b>	20,945,355				20,945,355			
GENERAL								
ST. SUP. SPECIAL								
FEDERAL								
OTHER	20,945,355				20,945,355			
<b>TRAVEL</b>	3,585,467				3,585,467			
GENERAL								
ST. SUP. SPECIAL								
FEDERAL								
OTHER	3,585,467				3,585,467			
<b>CONTRACTUAL</b>	19,248,284				19,248,284			
GENERAL								
ST. SUP. SPECIAL								
FEDERAL								
OTHER	19,248,284				19,248,284			
<b>COMMODITIES</b>	13,695,616				13,695,616			
GENERAL								
ST. SUP. SPECIAL								
FEDERAL								
OTHER	13,695,616				13,695,616			
<b>CAPTITAL-OTE</b>	94,090				94,090			
GENERAL								
ST. SUP. SPECIAL								
FEDERAL								
OTHER	94,090				94,090			
<b>EQUIPMENT</b>	98,650				98,650			
GENERAL								
ST. SUP. SPECIAL								
FEDERAL								
OTHER	98,650				98,650			
<b>VEHICLES</b>								
GENERAL								
ST. SUP. SPECIAL								
FEDERAL								
OTHER								
<b>WIRELESS DEV</b>								
GENERAL								
ST. SUP. SPECIAL								
FEDERAL								
OTHER								
<b>SUBSIDIES</b>	11,885,275				11,885,275			
GENERAL								
ST. SUP. SPECIAL								
FEDERAL								
OTHER	11,885,275				11,885,275			
<b>TOTAL</b>	69,552,737				69,552,737			

**FUNDING**

GENERAL FUNDS								
ST. SUP. SPCL FUNDS								
FEDERAL FUNDS								
OTHER SP. FUNDS	69,552,737				69,552,737			
<b>TOTAL</b>	69,552,737				69,552,737			

**POSITIONS**

GENERAL FTE								
ST. SUP. SPCL. FTE								
FEDERAL FTE								
OTHER SP. FTE	391.00				391.00			
<b>TOTAL</b>	391.00				391.00			

**PRIORITY LEVEL :**

--	--	--	--	--	--	--	--	--

**PROGRAM NARRATIVE**

Program Data Collected in Accordance with the Mississippi Performance Budget and Strategic Planning Act of 1994  
(To Accompany Form MBR-1-03)

University of Southern Mississippi - Auxiliary

1 - Auxiliary Enterprises

Name of Agency

Program Name

**I. Program Description:**

The University of Southern Mississippi's auxiliary enterprises are self-supporting entities. The larger auxiliaries include Residence Life, Moffitt Health Center, Recreational Sports, Intercollegiate Athletics, and Parking and Transit Services. These entities generate revenues from sales and services to the university community.

**II. Program Objective:**

To provide services to the University community, including faculty, staff, students, alumni, and friends.



**Elements of Quality Program Design**

For the Evaluation of Requests to Fund New Programs or New Activity in an Existing Program  
(To Accompany Form MBR-1-03A)

**PROGRAM PERFORMANCE MEASURES**

Program Data Collected in Accordance with the Mississippi Performance Budget and Strategic Planning Act of 1994

**PROGRAM 3% GENERAL FUND REDUCTION AND NARRATIVE EXPLANATION**

University of Southern Mississippi - Auxiliary (268-01)

	Fiscal Year 2021 Funding			FY 2021 GF PERCENT REDUCED
	Total Funds	Reduced Amount	Reduced Funding Amount	

Program Name: (1) Auxiliary Enterprises				
General				
State Support Special				
Federal				
Other Special	69,552,737		69,552,737	
<b>TOTAL</b>	<b>69,552,737</b>		<b>69,552,737</b>	

**Narrative Explanation:**

Program Name: (99) Summary of All Programs				
General				
State Support Special				
Federal				
Other Special	69,552,737		69,552,737	
<b>TOTAL</b>	<b>69,552,737</b>		<b>69,552,737</b>	

**BOARD OF TRUSTEES OF STATE INSTITUTIONS OF HIGHER LEARNING MEMBERS**

University of Southern Mississippi - Auxiliary (268-01)  
Name of Agency

A. Explain Rate and manner in which board members are reimbursed:

Board members are reimbursed through the Institution of Higher Learning System Administration budget with a per diem of \$40 plus expenses.

B. Estimated number of meetings FY 2021:

12 (Twelve)

<b>C. Board Members</b>	<b>City, Town, Residence</b>	<b>Appointed By</b>	<b>Date Appointed</b>	<b>Length of Term</b>
1. Dr. Douglas W. Rouse	Hattiesburg, MS	Barbour	05/08/2008	10 years
2. Mr. Alan W. Perry	Jackson, MS	Barbour	05/08/2008	10 years
3. Mr. C.D. Smith, Jr.	Meridian, MS	Barbour	05/08/2008	10 years
4. Ms. Christine L. Pickering	Biloxi, MS	Barbour	05/08/2008	10 years
5. Dr. Bradford J. Dye, III	Oxford, MS	Bryant	05/08/2012	9 years
6. Mr. Hal Parker	Bolton, MS	Bryant	05/08/2012	9 years
7. Mr. Shane Hooper	Tupelo, MS	Bryant	05/08/2012	9 years
8. Dr. Alfred E. McNair, Jr.	Gautier, MS	Bryant	05/08/2015	9 years
9. Dr. J. Walt Starr	Columbus, MS	Bryant	05/08/2015	9 years
10. Mr. Chip Morgan	Leland, MS	Bryant	05/08/2015	9 years
11. Mr. Tom Duff	Hattiesburg, MS	Bryant	05/08/2015	9 years
12. Justice Ann H. Lamar	Senatobia, MS	Bryant	02/08/2017	4 years

Identify Statutory Authority (Code Section or Executive Order Number)\*

*Constitutional Amendment 213A of the Constitution of the State of Mississippi.*

\*If Executive Order, please attach copy.

**SCHEDULE B  
CONTRACTUAL SERVICES**

University of Southern Mississippi - Auxiliary (268-01)

Name of Agency

MINOR OBJECT OF EXPENDITURE	(1) Actual Expenses FY Ending June 30, 2020	(2) Estimated Expenses FY Ending June 30, 2021	(3) Requested for FY Ending June 30, 2022
<b>A. Tuition, Rewards &amp; Awards (61050xxx-61080xxx)</b>			
Scholarships Scholarships	6,520,617	6,520,617	6,520,617
<b>Total</b>	<b>6,520,617</b>	<b>6,520,617</b>	<b>6,520,617</b>
<b>B. Transportation &amp; Utilities (61100xxx-61200xxx)</b>			
605200 IB Cont Svcs Comcat	21,311	21,311	21,311
605210 Postage And Post Office Charge	25,844	25,844	25,844
605220 Telephone Local Service	184,520	184,520	184,520
605230 Telephone Long Distance	7,016	7,016	7,016
605240 Telephone Installation And Mai	1,800	1,800	1,800
605245 Telephone Cellular	5,428	5,428	5,428
605247 Internet	23,618	23,618	23,618
605250 Cable TV	249,044	249,044	249,044
605260 Transportation Of Things	14,362	14,362	14,362
605310 Utilities Electricity	2,112,066	2,112,066	2,112,066
605320 Utilities Heat	444,439	444,439	444,439
605330 Utilities Water	630,991	630,991	630,991
605694 iTech Contractual Services	21,794	21,794	21,794
<b>Total</b>	<b>3,742,233</b>	<b>3,742,233</b>	<b>3,742,233</b>
<b>C. Public Information (61300xxx-6131xxxx)</b>			
605410 Advertising	79,258	79,258	79,258
605420 Publicity & Public Information	4,490	4,490	4,490
<b>Total</b>	<b>83,748</b>	<b>83,748</b>	<b>83,748</b>
<b>D. Rents (61400xxx-61490xxx)</b>			
605401 IB Cont Svc Facility Rental	22,794	22,794	22,794
605510 Rental Of Building And Floor S	25,497	25,497	25,497
605530 Rental Of Office Equipment	85,718	85,718	85,718
605545 Computer Usage Charges	345	345	345
605579 Tech A/V & Computer Rental Inc	5,037	5,037	5,037
605590 Other Rental	112,429	112,429	112,429
<b>Total</b>	<b>251,820</b>	<b>251,820</b>	<b>251,820</b>
<b>E. Repairs &amp; Service (61500xxx)</b>			
605610 Repair And Svc Streets Park Lo	39,817	39,817	39,817
605620 Repair And Svc - Buildings And	4,035	4,035	4,035
605640 Repair And Svc Vehicles	1,452	1,452	1,452

**SCHEDULE B  
CONTRACTUAL SERVICES**

University of Southern Mississippi - Auxiliary (268-01)

Name of Agency

MINOR OBJECT OF EXPENDITURE	(1) Actual Expenses FY Ending June 30, 2020	(2) Estimated Expenses FY Ending June 30, 2021	(3) Requested for FY Ending June 30, 2022
605650 Repair And Svchg Office Equipme	3,934	3,934	3,934
605660 Maintenance Contracts - Equipm	12,729	12,729	12,729
605670 Repair And Service Medical Equ	452	452	452
605679 Tech A/V Labor Inc	5,178	5,178	5,178
605690 Repair And Svchg Other Equipmen	229,232	229,232	229,232
605695 Physical Plant Contractual Ser	1,404,821	1,404,821	1,404,821
605696 PP Contractual Vehicle Serv	4,735	4,735	4,735
605700 IB Cont Svcs Profes	2,387	2,387	2,387
605740 Medical	258,551	258,551	258,551
605750 Instructional Services	5,930	5,930	5,930
<b>Total</b>	<b>1,973,253</b>	<b>1,973,253</b>	<b>1,973,253</b>
<b>F. Fees, Professional &amp; Other Services (6161xxxx-61699xxx)</b>			
6057 Fees	984,005	984,005	984,005
<b>Total</b>	<b>984,005</b>	<b>984,005</b>	<b>984,005</b>
<b>G. Other Contractual Services (61700xxx-61790xxx, 61900xxx)</b>			
605791 Security at Athletic Events	31,597	31,597	31,597
605792 Event Staff at Athletic Events	197,653	197,653	197,653
605795 Police Department Special Duty	35,832	35,832	35,832
605810 Insurance And Fidelity Bonds	363,659	363,659	363,659
605811 RA Health Insurance	218,628	218,628	218,628
605820 Dues	421,431	421,431	421,431
605830 Laundry, Dry Clean And Towel S	84,177	84,177	84,177
605840 Subscriptions	90,247	90,247	90,247
605850 Payments To Visiting Athletic	414,228	414,228	414,228
605859 Student Recruitment Costs	1,161	1,161	1,161
605860 Employee Recruitment Costs	3,580	3,580	3,580
605861 Game Officials	453,903	453,903	453,903
605865 Employee Moving	75,508	75,508	75,508
<b>Total</b>	<b>2,391,604</b>	<b>2,391,604</b>	<b>2,391,604</b>
<b>H. Information Technology (61800xxx-61890xxx)</b>			
605880 Computer Software Maintenance	133,142	133,142	133,142
605889 Tech SW Mtce Inc	8	8	8
605890 Computer Software Acquisitions	116,112	116,112	116,112
<b>Total</b>	<b>249,262</b>	<b>249,262</b>	<b>249,262</b>

**SCHEDULE B  
CONTRACTUAL SERVICES**

University of Southern Mississippi - Auxiliary (268-01)

Name of Agency

MINOR OBJECT OF EXPENDITURE	(1) Actual Expenses FY Ending June 30, 2020	(2) Estimated Expenses FY Ending June 30, 2021	(3) Requested for FY Ending June 30, 2022
<b>I. Other (61910xxx-61990xxx)</b>			
605400 Int Billing Cont Services	45,452	45,452	45,452
605890 Other Contractual Services	1,051,346	1,748,750	1,748,750
605891 Provision For Bad Debts	891,658	891,658	891,658
605893 Auxiliary Administrative Expen	358,185	358,185	358,185
605895 Accreditation And Review	6,896	6,896	6,896
605995 Refunds And Adjustments	801	801	801
<b>Total</b>	<b>2,354,338</b>	<b>3,051,742</b>	<b>3,051,742</b>
<b>Grand Total</b> <i>(Enter on Line 1-B of Form MBR-1)</i>	<b>18,550,880</b>	<b>19,248,284</b>	<b>19,248,284</b>
<b>Funding Summary:</b>			
General Funds			
State Support Special Funds			
Federal Funds			
Other Special Funds	18,550,880	19,248,284	19,248,284
<b>Total Funds</b>	<b>18,550,880</b>	<b>19,248,284</b>	<b>19,248,284</b>

**SCHEDULE C  
COMMODITIES**

University of Southern Mississippi - Auxiliary (268-01)

Name of Agency

MINOR OBJECT OF EXPENDITURE	(1) Actual Expenses FY Ending June 30, 2020	(2) Estimated Expenses FY Ending June 30, 2021	(3) Requested for FY Ending June 30, 2022
<b>A. Maintenance &amp; Constr. Materials &amp; Supplies (62000xxx, 62015xxx)</b>			
606010 Land Improvement Supplies	2,828	2,828	2,828
606020 Building Construction Supplies	(88)	(88)	(88)
606030 Paints And Preservatives	21,757	21,757	21,757
606040 Hardware Plumbing & Electrl	104,088	104,088	104,088
606050 Custodial Supplies & Cleaning	93,277	93,277	93,277
606090 Other Maintenance Materials	102,144	102,144	102,144
<b>Total</b>	<b>324,006</b>	<b>324,006</b>	<b>324,006</b>
<b>B. Printing &amp; Office Supplies &amp; Materials (62010xxx, 62085xxx, 62100xxx, 62125xxx, 62400xxx)</b>			
606110 Printing Binding And Padding	90,190	90,190	90,190
606114 Specialty Printing 1	77,796	77,796	77,796
606115 Specialty Printing 2	1,540	1,540	1,540
606120 Duplication And Reproduction	1,084	1,084	1,084
606130 Office Supplies And Materials	74,489	74,489	74,489
606140 Purchased Instructional Materi	2,051	2,051	2,051
606411 Office Mch Furn Fix < \$5000	246,592	246,592	246,592
<b>Total</b>	<b>493,742</b>	<b>493,742</b>	<b>493,742</b>
<b>C. Equipment Repair Parts, Supplies &amp; Acces. (6205xxxx, 62072xxx, 62110xxx, 62115xxx, 62120xxx, 62130xxx)</b>			
606210 Fuels	95,079	95,079	95,079
606220 Lubricating Oils And Greases	1,363	1,363	1,363
606240 Repair And Replacement Parts	73,223	73,223	73,223
606250 Shop Supplies	16	16	16
606290 Other Equip Repair Parts And S	47,391	47,391	47,391
606410 Small Tools	3,474	3,474	3,474
606414 Medical Equip < \$5000	11,449	11,449	11,449
606415 Data Processing Equip <\$5000	29,217	29,217	29,217
606416 Radio TV Equip < \$5000	630	630	630
606417 Scientific Equip < \$5000	699	699	699
606418 Other Equip < \$5000	103,494	103,494	103,494
606419 Tech HW/Equip Inc	348	348	348
606495 Furniture & Equip under \$1000	74,299	74,299	74,299
606496 Computer Camera&TVunder \$250	2,077	2,077	2,077
<b>Total</b>	<b>442,759</b>	<b>442,759</b>	<b>442,759</b>
<b>D. Professional &amp; Sci. Supplies and Materials (62025xxx, 62030xxx, 62070xxx, 62095xxx, 62105xxx, 6212xxxx)</b>			
606310 Laboratory And Testing Supplye	118,205	118,205	118,205



**SCHEDULE C  
COMMODITIES**

University of Southern Mississippi - Auxiliary (268-01)

Name of Agency

MINOR OBJECT OF EXPENDITURE	(1) Actual Expenses FY Ending June 30, 2020	(2) Estimated Expenses FY Ending June 30, 2021	(3) Requested for FY Ending June 30, 2022
606315 Infectious Disease Supplies	12,271	12,271	12,271
606320 Photographic & Reproduction Su	2,410	2,410	2,410
606330 Drugs & Chemicals For Medcl An	5,277	5,277	5,277
606350 Other Chemicals	1,265	1,265	1,265
606360 Field Supplies	5,250	5,250	5,250
<b>Total</b>	<b>144,678</b>	<b>144,678</b>	<b>144,678</b>

<b>E. Other Supplies &amp; Materials (62005xxx, 62015xxx, 62020xxx, 62035xxx, 62040xxx, 62045xxx, 62060xxx, 62065xxx, 62075xxx-62080xxx, 62090xxx, 62115xxx, 62135xxx, 62140xxx, 62405xxx, 62415xxx, 62500xxx-62999xxx)</b>			
606190 Participant Cost - Commodities	134	134	134
606430 Clothes And Dry Goods For Pers	626,479	626,479	626,479
606440 Food For Persons	864,440	864,440	864,440
606460 Seed And Plants	(4,681)	(4,681)	(4,681)
606479 Tech A/V Supplies and Material	873	873	873
606490 Other Supplies And Materials	676,141	2,225,197	2,225,197
606492 Goods on Consignment	20	20	20
606498 P Card Purchase Commodities	692	692	692
606510 Merch For Resale-Phone Local	2,400	2,400	2,400
606519 Merch For Resale - Postage	149,889	149,889	149,889
606550 Merch For Resale- Electricity	5,617,946	5,617,946	5,617,946
606551 Merch For Resale - Gas	1,436,986	1,436,986	1,436,986
606553 Merch For Resale - Water	597,346	597,346	597,346
606600 Int Billing Commodities	44,553	44,553	44,553
606900 Merch For Resale General	728,157	728,157	728,157
<b>Total</b>	<b>10,741,375</b>	<b>12,290,431</b>	<b>12,290,431</b>

<b>Grand Total</b> <i>(Enter on Line 1-C of Form MBR-1)</i>	<b>12,146,560</b>	<b>13,695,616</b>	<b>13,695,616</b>
--	-------------------	-------------------	-------------------

<b>Funding Summary:</b>			
General Funds			
State Support Special Funds			
Federal Funds			
Other Special Funds	12,146,560	13,695,616	13,695,616
<b>Total Funds</b>	<b>12,146,560</b>	<b>13,695,616</b>	<b>13,695,616</b>

**SCHEDULE D-1  
CAPITAL OUTLAY  
OTHER THAN EQUIPMENT**

University of Southern Mississippi - Auxiliary (268-01)  
Name of Agency \_\_\_\_\_

MINOR OBJECT OF EXPENDITURE	(1) Actual Expenses FY Ending June 30, 2020	(2) Estimated Expenses FY Ending June 30, 2021	(3) Requested for FY Ending June 30, 2022
-----------------------------	--	---	--

<b>B. Buildings &amp; Improvements (63100xxx)</b>			
Buildings & Improvements Buildings & Improvements		94,090	94,090
<b>Total</b>		<b>94,090</b>	<b>94,090</b>

<b>Grand Total</b> <i>(Enter on Line 1-D-1 of Form MBR-1)</i>		<b>94,090</b>	<b>94,090</b>
--	--	---------------	---------------

<b>Funding Summary:</b>			
General Funds			
State Support Special Funds			
Federal Funds			
Other Special Funds		94,090	94,090
<b>Total Funds</b>		<b>94,090</b>	<b>94,090</b>

**SCHEDULE D-2  
CAPITAL OUTLAY EQUIPMENT**

University of Southern Mississippi - Auxiliary (268-01)

Name of Agency

EQUIPMENT BY ITEM	Act. FY Ending June 30, 2020		Est. FY Ending June 30, 2021		Req. FY Ending June 30, 2022	
	No. of Units	Total Cost	No. of Units	Total Cost	No. of Units	Total Cost

<b>B. Road Machinery, Farm &amp; Other Equipment (63300xxx)</b>						
Vehicles Over \$5000	2	70,405	2	70,405	2	70,405
<b>Total</b>		<b>70,405</b>		<b>70,405</b>		<b>70,405</b>

<b>F. Other Equipment (63200xxx)</b>						
Other Equipment Over \$5000	3	30,415	2	28,245	2	28,245
<b>Total</b>		<b>30,415</b>		<b>28,245</b>		<b>28,245</b>

<b>Grand Total</b> <i>(Enter on Line 1-D-2 of Form MBR-1)</i>		<b>100,820</b>		<b>98,650</b>		<b>98,650</b>
--	--	----------------	--	---------------	--	---------------

<b>Funding Summary:</b>						
General Funds						
State Support Special Funds						
Federal Funds						
Other Special Funds		100,820		98,650		98,650
<b>Total Funds</b>		<b>100,820</b>		<b>98,650</b>		<b>98,650</b>

**SCHEDULE D-3  
PASSENGER/WORK VEHICLES**

University of Southern Mississippi - Auxiliary (268-01)

Name of Agency

MINOR OBJECT OF EXPENDITURE	Vehicle Inventory June 30, 2020	Act. FY Ending June 30, 2020		Est. FY Ending June 30, 2021		Req. FY Ending June 30, 2022	
		No. of Units	Total Cost	No. of Units	Total Cost	No. of Units	Total Cost

<b>GRAND TOTAL</b> <i>(Enter on Line 1-D-3 of Form MBR-1)</i>							
--	--	--	--	--	--	--	--

<b>Funding Summary:</b>			
General Funds			
State Support Special Funds			
Federal Funds			
Other Special Funds			
<b>Total Funds</b>			

**SCHEDULE D-4  
WIRELESS COMMUNICATION DEVICES**

University of Southern Mississippi - Auxiliary (268-01)  
Name of Agency \_\_\_\_\_

MINOR OBJECT OF EXPENDITURE	Device Inventory June 30, 2020	Act. FY Ending June 30, 2020		Est. FY Ending June 30, 2021		Req. FY Ending June 30, 2022	
		No. of Devices	Actual Cost	No. of Devices	Estimated Cost	No. of Devices	Requested Cost

<b>Grand Total</b> <i>(Enter on Line 1-D-4 of Form MBR-1)</i>							
--	--	--	--	--	--	--	--

<b>Funding Summary:</b>							
General Funds							
State Support Special Funds							
Federal Funds							
Other Special Funds							
<b>Total Funds</b>							

**SCHEDULE E  
SUBSIDIES, LOANS & GRANTS**

University of Southern Mississippi - Auxiliary (268-01)

Name of Agency

MINOR OBJECT OF EXPENDITURE	(1) Actual Expenses FY Ending June 30, 2020	(2) Estimated Expenses FY Ending June 30, 2021	(3) Requested for FY Ending June 30, 2022
-----------------------------	--	---	--

<b>D. Debt Service &amp; Judgments (67205xxx-67255xxx, 68205xxx-68430xxx, 70040xxx)</b>			
690130 Designated	2,640		
690180 Debt Service	11,112,873	11,402,572	11,402,572
<b>Total</b>	<b>11,115,513</b>	<b>11,402,572</b>	<b>11,402,572</b>

<b>E. Other (67000xxx-67019xxx, 67021xxx-67199xxx, 67998xxx, 68500xxx-68860xxx, 70045xxx-70080xxx, 80000xxx-80500xxx)</b>			
691 NMX OUT	482,703	482,703	482,703
<b>Total</b>	<b>482,703</b>	<b>482,703</b>	<b>482,703</b>

<b>Grand Total</b> <i>(Enter on Line 1-E of Form MBR-1)</i>	<b>11,598,216</b>	<b>11,885,275</b>	<b>11,885,275</b>
--	-------------------	-------------------	-------------------

<b>Funding Summary:</b>			
General Funds			
State Support Special Funds			
Federal Funds			
Other Special Funds	11,598,216	11,885,275	11,885,275
<b>Total Funds</b>	<b>11,598,216</b>	<b>11,885,275</b>	<b>11,885,275</b>

**NARRATIVE**  
**2022 BUDGET REQUEST**

University of Southern Mississippi - Auxiliary (268-01)

---

Name of Agency

The University of Southern Mississippi's auxiliary enterprises are self-supporting entities. The larger auxiliaries include Residence Life, Moffitt Health Center, Recreational Sports, Intercollegiate Athletics, and Parking and Transit Services. These entities generate revenues from sales and services to the university community.

**OUT-OF-STATE TRAVEL  
FISCAL YEAR 2022**

University of Southern Mississippi - Auxiliary (268-01)

Name of Agency

Note: All expenditures recorded on this form must be totaled and said total must agree with the out-of-state travel amount indicated for FY 2020 on Form Mbr-1, line 1.A.2.b.

<b>Employee's Name</b>	<b>Destination</b>	<b>Purpose</b>	<b>Travel Cost</b>	<b>Funding Source</b>
Out of State - Auxiliary & Athletics	Out of State	Out of State	2,172,118	Sales & Services
<b>Total Out of State Cost</b>			<b>\$ 2,172,118</b>	



**FEES, PROFESSIONAL AND OTHER SERVICES**

University of Southern Mississippi - Auxiliary (268-01)

Name of Agency

TYPE OF FEE AND NAME OF VENDOR	Retired w/ PERS	(1) Actual Expenses FY Ending June 30, 2020	(2) Estimated Expenses FY Ending June 30, 2021	(3) Requested Expenses FY Ending June 30, 2022	Fund Source
<b>6057 Fees</b>					
Bank/Merchant Fees/Bank/Merchant Fees <i>Comp. Rate: \$30,000 - \$35,000 Per Year</i>	N	32,095	32,095	32,095	Sales & Services
Consultant Expense Reimburse/Consultant Expense Reimburse <i>Comp. Rate: \$100 to \$500 Per Year</i>	N	120	120	120	Sales & Services
Copyright Fees/Copyright Fees <i>Comp. Rate: Internal Billing Reimbursements</i>	N	(300)	(300)	(300)	Sales & Services
Laboratory And Testing Fees/Laboratory And Testing Fees <i>Comp. Rate: \$55,000 - \$65,000 Per Year</i>	N	60,904	60,904	60,904	Sales & Services
Other Professional Fees And Sv/Other Professional Fees And Sv <i>Comp. Rate: \$750,000 To \$1,000,000 Per Year</i>	N	883,399	883,399	883,399	Sales & Services
Participant Cost-Cont Services/Participant Cost-Cont Services <i>Comp. Rate: \$500 - \$1,500 Per Year</i>	N	789	789	789	Sales & Services
Professional Development Fees/Professional Development Fees <i>Comp. Rate: \$2,000 - \$5,000 Per Year</i>	N	2,882	2,882	2,882	Sales & Services
Technology Prof Fees & Svcs/Technology Prof Fees & Svcs <i>Comp. Rate: \$3,000 To \$5,000 Per Year</i>	N	4,116	4,116	4,116	Sales & Services
<b>Total 6057 Fees</b>		<b>984,005</b>	<b>984,005</b>	<b>984,005</b>	
<b>GRAND TOTAL</b>		<b>984,005</b>	<b>984,005</b>	<b>984,005</b>	

**VEHICLE PURCHASE DETAILS**

University of Southern Mississippi - Auxiliary (268-01)

Name of Agency

<b>Year</b>	<b>Model</b>	<b>Person(s) Assigned To</b>	<b>Vehicle Purpose/Use</b>	<b>Replacement Or New?</b>	<b>FY2022 Req. Cost</b>
-------------	--------------	------------------------------	----------------------------	--------------------------------	-----------------------------

**TOTAL VEHICLE REQUEST**

**VEHICLE INVENTORY  
AS OF JUNE 30, 2020**

University of Southern Mississippi - Auxiliary (268-01)

Name of Agency

Vehicle Type	Vehicle Description	Model Year	Model	Person(s) Assigned To	Purpose/Use	Tag Number	Mileage on 6-30-2020	Average Miles per Year	Replacement Proposed	
									FY2021	FY2022

**VEHICLE POOL MEMBER LIST  
2022 BUDGET REQUEST**

University of Southern Mississippi - Auxiliary (268-01)

---

Name of Agency

See Hattiesburg MBR

**PRIORITY OF DECISION UNITS  
FISCAL YEAR 2022**

University of Southern Mississippi - Auxiliary (268-01)

Name of Agency

<b>Program</b>	<b>Decision Unit</b>	<b>Object</b>	<b>Amount</b>
----------------	----------------------	---------------	---------------

**CAPITAL LEASES**

University of Southern Mississippi - Auxiliary (268-01)

Name of Agency

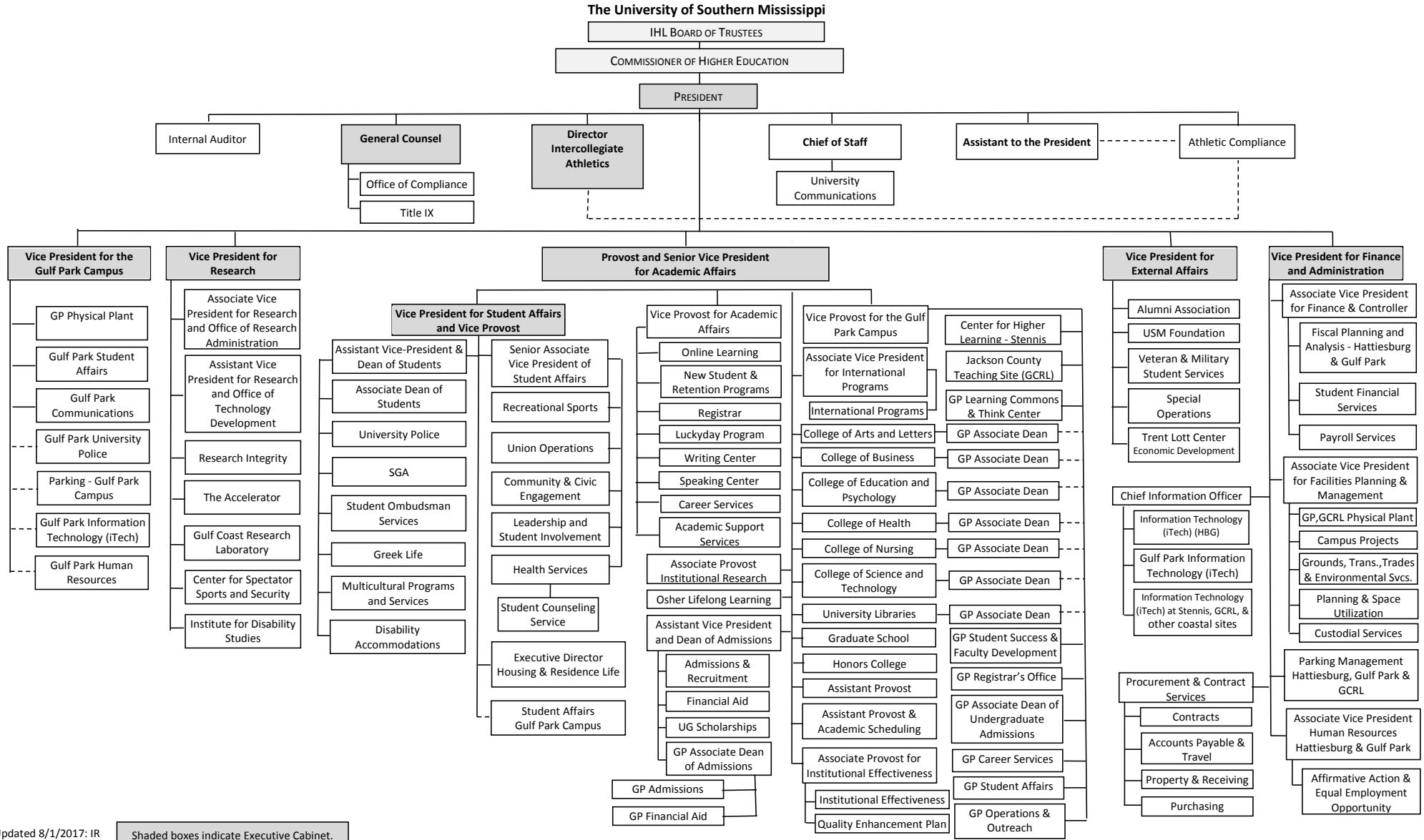
VENDOR/ ITEM LEASED	Original Date of Lease	Original No. of Months of Lease	No. of Months Remaining on 6-30-20	Last Payment Date	Interest Rate	Amount of Each Payment			Total of Payments To Be Made					
						Actual FY 2020			Estimated FY 2021			Requested FY 2022		
						Principal	Interest	Total	Principal	Interest	Total	Principal	Interest	Total

**Summary of 3% General Fund Program Reduction to FY 2021 Appropriated Funding by Major Object**

University of Southern Mississippi - Auxiliary (268-01)

Name of Agency

<b>Major Object</b>	<b>FY2021 General Fund Reduction</b>	<b>EFFECT ON FY2021 STATE SUPPORT SPECIAL FUNDS</b>	<b>EFFECT ON FY2021 FEDERAL FUNDS</b>	<b>EFFECT ON FY2021 OTHER SPECIAL FUNDS</b>	<b>TOTAL 3% REDUCTIONS</b>
<b>SALARIES, WAGES, FRINGE</b>					
<b>TRAVEL</b>					
<b>CONTRACTUAL</b>					
<b>COMMODITIES</b>					
<b>OTHER THAN EQUIPMENT</b>					
<b>EQUIPMENT</b>					
<b>VEHICLES</b>					
<b>WIRELESS COMM. DEVS.</b>					
<b>SUBSIDIES, LOANS, ETC</b>					
<b>TOTALS</b>					



Updated 8/1/2017: IR




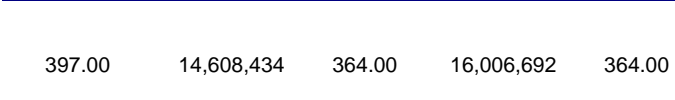
Shaded boxes indicate Executive Cabinet.



BOARD OF TRUSTEES OF STATE  
INSTITUTIONS OF HIGHER LEARNING  
STATE OF MISSISSIPPI

Schedule A  
Salaries and Wages

Agency: University of Southern Mississippi - Auxiliary (268-01)

	Actual Expenses		Estimated Expenses		Required for					
	FY Ending		FY Ending		FY Ending					
	30-Jun-20		30-Jun-21		30-Jun-22					
	FTE	Dollars	FTE	Dollars	FTE	Dollars				
<b>CURRENT POSITIONS:</b>										
1000 - Salaries	0.00	0	0.00	0	0.00	0				
1100 - Exec, Admin & Managerial	0.00	0	0.00	0	0.00	0				
1200 - Faculty	0.00	0	0.00	0	0.00	0				
9 month	0.00	0	0.00	0	0.00	0				
12 month	0.00	0	0.00	0	0.00	0				
Other	<u>0.00</u>	<u>0</u>	<u>0.00</u>	<u>0</u>	<u>0.00</u>	<u>0</u>				
Total Faculty	0.00	0	0.00	0	0.00	0				
1100 - Exec Admin And Managerial	4.00	739,489	7.00	810,270	7.00	810,270				
1300 - Professional Non-faculty	147.00	9,518,082	147.00	10,429,113	147.00	10,429,113				
1400 - Clerical and Secretarial	29.00	767,445	24.00	840,902	24.00	840,902				
1500 - Technical & Paraprofessional	7.00	251,559	7.00	275,637	7.00	275,637				
1600 - Skilled Crafts	18.00	487,143	19.00	533,770	19.00	533,770				
1700 - Services/Maintenance	70.00	1,404,987	58.00	1,539,466	58.00	1,539,466				
1800 - Students	<u>122.00</u>	<u>1,439,729</u>	<u>102.00</u>	<u>1,577,534</u>	<u>102.00</u>	<u>1,577,534</u>				
TOTAL	397.00	14,608,434.00	364.00	16,006,692	364.00	16,006,692				
<b>NEW POSITIONS REQUIRED FOR FY 2022:</b>					FTE	Dollars				
1100 - Exec, Admin & Managerial					0.00	0				
1200 - Faculty					0.00	0				
9 month					0.00	0				
12 month					0.00	0				
Other					0.00	0				
1300 - Professional Non-faculty					0.00	0				
1400 - Clerical and Secretarial					0.00	0				
1500 - Technical & Paraprofessional					0.00	0				
1600 - Skilled Crafts					0.00	0				
1700 - Services/Maintenance					0.00	0				
1800 - Students					<u>0.00</u>	<u>0</u>				
TOTAL					0.00	0				
<b>PROMOTIONS, REALIGNMENTS, RECLASSIFICATIONS FOR FY 2022:</b>					Dollars					
1100 - Exec, Admin & Managerial									0	
1200 - Faculty									0	
9 month									0	
12 month									0	
Other									0	
1300 - Professional Non-faculty									0	
1400 - Clerical and Secretarial									0	
1500 - Technical & Paraprofessional	0									
1600 - Skilled Crafts	0									
1700 - Services/Maintenance	0									
1800 - Students					<u>0</u>					
TOTAL					0					
GRAND TOTAL Salaries and Wages					397.00	14,608,434	364.00	16,006,692	364.00	16,006,692

BOARD OF TRUSTEES OF STATE  
INSTITUTIONS OF HIGHER LEARNING  
STATE OF MISSISSIPPI

Schedule A-1  
Fringe Benefits

Agency: University of Southern Mississippi - Auxiliary (268-01)

	Actual Expenses FY Ending 30-Jun-20	Estimated Expenses FY Ending 30-Jun-21	Continuation Required for FY Ending 30-Jun-22
<b>CURRENT POSITIONS:</b>			
3910 - Employees' Retirement Matching	2,148,894	2,334,434	2,334,434
3920 - FICA Matching	912,961	991,788	991,788
3930 - Workers' Compensation	175,952	191,144	191,144
3940 - Health Insurance Contribution	1,068,902	1,161,193	1,161,193
3945 - GA Health Insurance Contribution	8,772	9,529	9,529
3950 - Group Life Insurance	12,898	14,012	14,012
3960 - Civil Service (Agriculture Units)	0	0	0
3970 - Unemployment Tax	26,517	28,807	28,807
3980 - Remission of Fees	191,243	207,755	207,755
3998-Fringe Transfers	0	0	0
<b>TOTAL Fringe Benefits for Continuing Employees</b>	<b>4,546,139</b>	<b>4,938,663</b>	<b>4,938,663</b>
<b>ESTIMATED FRINGE BENEFITS REQUIRED FOR NEW POSITIONS FOR FY 2022:</b>			
3910 - Employees' Retirement Matching			0
3920 - FICA Matching			0
3930 - Workers' Compensation			0
3940 - Health Insurance Contribution			0
3950 - Group Life Insurance			0
3960 - Civil Service (Agriculture Units)			0
3970 - Unemployment Tax			0
3980 - Remission of Fees			0
<b>TOTAL Fringe Benefits for New Positions</b>			<b>0</b>
<b>FRINGE BENEFITS FOR PROMOTIONS, REALIGNMENTS, RECLASSIFICATIONS FOR FY 2022:</b>			
3910 - Employees' Retirement Matching			0
3920 - FICA Matching			0
3930 - Workers' Compensation			0
3940 - Health Insurance Contribution			0
3950 - Group Life Insurance			0
3960 - Civil Service (Agriculture Units)			0
3970 - Unemployment Tax			0
3980 - Remission of Fees			0
<b>TOTAL Fringe Benefits for Promotions, etc.</b>			<b>0</b>
<b>GRAND TOTAL Fringe Benefits</b>	<b>4,546,139</b>	<b>4,938,663</b>	<b>4,938,663</b>
<b>SUBTOTAL SALARIES, WAGES &amp; FRINGE BENEFITS</b>	<b>19,154,573</b>	<b>20,945,355</b>	<b>20,945,355</b>
<b>LESS VACANCY RATE</b>	<b>NA</b>	<b>0</b>	<b>0</b>
<b>TOTAL SALARIES, WAGES &amp; FRINGE BENEFITS</b>	<b>19,154,573</b>	<b>20,945,355</b>	<b>20,945,355</b>