

University of Southern Mississippi - Auxiliary

118 College Drive, Hattiesburg, MS 39401

Dr. Rodney Bennett

AGENCY

ADDRESS

CHIEF EXECUTIVE OFFICER

	Actual Expenses June 30,2021	Estimated Expenses June 30,2022	Requested For June 30,2023	Requested Over/(Under) Estimated	
				AMOUNT	PERCENT
I. A. PERSONAL SERVICES					
1. Salaries, Wages & Fringe Benefits (Base)	19,502,493	21,304,415	21,304,415		
a. Additional Compensation					
b. Proposed Vacancy Rate (Dollar Amount)					
c. Per Diem					
Total Salaries, Wages & Fringe Benefits	19,502,493	21,304,415	21,304,415		
2. Travel					
a. Travel & Subsistence (In-State)	244,681	548,979	548,979		
b. Travel & Subsistence (Out-Of-State)	1,642,141	2,813,516	2,813,516		
c. Travel & Subsistence (Out-Of-Country)		68,622	68,622		
Total Travel	1,886,822	3,431,117	3,431,117		
B. CONTRACTUAL SERVICE S (Schedule B)					
a. Tuition, Rewards & Awards	6,834,134	6,985,000	6,985,000		
b. Communications, Transportation & Utilities	3,771,849	3,888,841	3,888,841		
c. Public Information	93,875	123,169	123,169		
d. Rents	226,497	281,800	281,800		
e. Repairs & Service	1,451,099	1,554,210	1,554,210		
f. Fees, Professional & Other Services	612,740	872,400	872,400		
g. Other Contractual Services	2,234,866	2,523,500	2,523,500		
h. Data Processing	301,777	350,000	350,000		
i. Other	1,847,906	2,231,948	2,231,948		
Total Contractual Services	17,374,743	18,810,868	18,810,868		
C. COMMODITIES (Schedule C)					
a. Maintenance & Construction Materials & Supplies	223,953	630,000	630,000		
b. Printing & Office Supplies & Materials	186,812	273,000	273,000		
c. Equipment, Repair Parts, Supplies & Accessories	483,974	845,000	845,000		
d. Professional & Scientific Supplies & Materials	103,521	128,058	128,058		
e. Other Supplies & Materials	9,596,490	11,882,283	11,882,283		
Total Commodities	10,594,750	13,758,341	13,758,341		
D. CAPITAL OUTLAY					
1. Total Other Than Equipment (Schedule D-1)		75,090	75,090		
2. Equipment (Schedule D-2)					
b. Road Machinery, Farm & Other Working Equipment	52,250	79,808	79,808		
c. Office Machines, Furniture, Fixtures & Equipment					
d. IS Equipment (Data Processing & Telecommunications)					
e. Equipment - Lease Purchase					
f. Other Equipment	36,342	36,342	36,342		
Total Equipment (Schedule D-2)	88,592	116,150	116,150		
3. Vehicles (Schedule D-3)					
4. Wireless Comm. Devices (Schedule D-4)					
E. SUBSIDIES, LOANS & GRANTS (Schedule E)	11,697,326	11,715,894	11,715,894		
TOTAL EXPENDITURES	61,144,726	69,211,875	69,211,875		
II. BUDGET TO BE FUNDED AS FOLLOWS:					
Cash Balance-Unencumbered					
General Fund Appropriation (Enter General Fund Lapse Below)					
State Support Special Funds					
Federal Funds _____ Other Special Funds (Specify) _____					
Sales & Services	61,144,726	69,211,875	69,211,875		
Less: Estimated Cash Available Next Fiscal Period					
TOTAL FUNDS (equals Total Expenditures above)	61,144,726	69,211,875	69,211,875		
GENERAL FUND LAPSE					
III: PERSONNEL DATA					
Number of Positions Authorized in Appropriation Bill					
a.) Perm Full	381	386	386		
b.) Perm Part					
c.) T-L Full					
d.) T-L Part					
Average Annual Vacancy Rate (Percentage)					
a.) Perm Full					
b.) Perm Part					
c.) T-L Full					
d.) T-L Part					

Approved by: Dr. Rodney D. Bennett *Rodney D. Bennett*
Official of Board or Commission

Submitted by: Lynn L. Smith

Date: 7/22/2021 2:30 PM

Budget Officer: Lynn Smith / Lynn.smith@usm.edu

Phone Number: 601.266.4632

Title: Director of Fiscal Planning and

REQUEST BY FUNDING SOURCE

Name of Agency : University of Southern Mississippi - Auxiliary

Specify Funding Sources As Shown Below	FY 2021 Actual Amount	% of Line Item	% of Total Budget	FY 2022 Estimated Amount	% of Line Item	% of Total Budget	FY 2023 Requested Amount	% of Line Item	% of Total Budget
1. General _____ State Support Special (Specify) _____									
2. Budget Contingency Fund									
3. Education Enhancement Fund									
4. Health Care Expendable Fund									
5. Tobacco Control Fund									
6. Capital Expense Fund									
7. Working Cash Stabilization Reserve Fund									
8. BP Settlement Fund									
9. Gulf Coast Restoration Fund									
10. Back To Business Mississippi Grant Fund									
11. MS COVID-19 Relief Payment Fund									
12. DFA CARES Act COVID-19 Fund									
13. MS Tourism Recovery Fund									
14. MS Nonprofit Museums Recovery Fund									
15. Equity in Distance Learning Fund									
16. Postsecondary Education COVID-19 Relief Grant Fund									
17. Independent Schools' COVID-19 Assistance Grant Fund									
18. MS Pandemic Response Broadband Availability Grant Program Fund									
19. MS Emergency Management Agency COVID-19 Fund									
20. MS Electric Cooperatives Broadband COVID-19 Grant Program Fund									
21. COVID-19 Broadband Provider Grant Program Fund									
22. Rental Assistance Grant Program Fund									
23. ICU Infrastructure Fund									
24. Poultry Farmer Stabilization Grant Program Fund									
25. Mississippi Supplemental CFAP Grant Program Fund									
26. Sweet Potato Farm Sustainment Grant Program Fund									
27. Coronavirus Local Fiscal Recovery Fund									
28. Coronavirus State Fiscal Recovery Fund									
29. Federal _____ Other Special (Specify) _____									
30. Sales & Services	19,502,493	100.00		21,304,415	100.00		21,304,415	100.00	
31.									
32.									
33.									
Total Salaries	19,502,493		31.90%	21,304,415		30.78%	21,304,415		30.78%

REQUEST BY FUNDING SOURCE

Name of Agency : University of Southern Mississippi - Auxiliary

Specify Funding Sources As Shown Below	FY 2021 Actual Amount	% of Line Item	% of Total Budget	FY 2022 Estimated Amount	% of Line Item	% of Total Budget	FY 2023 Requested Amount	% of Line Item	% of Total Budget
1. General _____ State Support Special (Specify) _____									
2. Budget Contingency Fund									
3. Education Enhancement Fund									
4. Health Care Expendable Fund									
5. Tobacco Control Fund									
6. Capital Expense Fund									
7. Working Cash Stabilization Reserve Fund									
8. BP Settlement Fund									
9. Gulf Coast Restoration Fund									
10. Back To Business Mississippi Grant Fund									
11. MS COVID-19 Relief Payment Fund									
12. DFA CARES Act COVID-19 Fund									
13. MS Tourism Recovery Fund									
14. MS Nonprofit Museums Recovery Fund									
15. Equity in Distance Learning Fund									
16. Postsecondary Education COVID-19 Relief Grant Fund									
17. Independent Schools' COVID-19 Assistance Grant Fund									
18. MS Pandemic Response Broadband Availability Grant Program Fund									
19. MS Emergency Management Agency COVID-19 Fund									
20. MS Electric Cooperatives Broadband COVID-19 Grant Program Fund									
21. COVID-19 Broadband Provider Grant Program Fund									
22. Rental Assistance Grant Program Fund									
23. ICU Infrastructure Fund									
24. Poultry Farmer Stabilization Grant Program Fund									
25. Mississippi Supplemental CFAP Grant Program Fund									
26. Sweet Potato Farm Sustainment Grant Program Fund									
27. Coronavirus Local Fiscal Recovery Fund									
28. Coronavirus State Fiscal Recovery Fund									
29. Federal _____ Other Special (Specify) _____									
30. Sales & Services	1,886,822	100.00		3,431,117	100.00		3,431,117	100.00	
31.									
32.									
33.									
Total Travel	1,886,822		3.09%	3,431,117		4.96%	3,431,117		4.96%

REQUEST BY FUNDING SOURCE

Name of Agency : University of Southern Mississippi - Auxiliary

Specify Funding Sources As Shown Below	FY 2021 Actual Amount	% of Line Item	% of Total Budget	FY 2022 Estimated Amount	% of Line Item	% of Total Budget	FY 2023 Requested Amount	% of Line Item	% of Total Budget
1. General _____ State Support Special (Specify) _____									
2. Budget Contingency Fund									
3. Education Enhancement Fund									
4. Health Care Expendable Fund									
5. Tobacco Control Fund									
6. Capital Expense Fund									
7. Working Cash Stabilization Reserve Fund									
8. BP Settlement Fund									
9. Gulf Coast Restoration Fund									
10. Back To Business Mississippi Grant Fund									
11. MS COVID-19 Relief Payment Fund									
12. DFA CARES Act COVID-19 Fund									
13. MS Tourism Recovery Fund									
14. MS Nonprofit Museums Recovery Fund									
15. Equity in Distance Learning Fund									
16. Postsecondary Education COVID-19 Relief Grant Fund									
17. Independent Schools' COVID-19 Assistance Grant Fund									
18. MS Pandemic Response Broadband Availability Grant Program Fund									
19. MS Emergency Management Agency COVID-19 Fund									
20. MS Electric Cooperatives Broadband COVID-19 Grant Program Fund									
21. COVID-19 Broadband Provider Grant Program Fund									
22. Rental Assistance Grant Program Fund									
23. ICU Infrastructure Fund									
24. Poultry Farmer Stabilization Grant Program Fund									
25. Mississippi Supplemental CFAP Grant Program Fund									
26. Sweet Potato Farm Sustainment Grant Program Fund									
27. Coronavirus Local Fiscal Recovery Fund									
28. Coronavirus State Fiscal Recovery Fund									
29. Federal _____ Other Special (Specify) _____									
30. Sales & Services	17,374,743	100.00		18,810,868	100.00		18,810,868	100.00	
31.									
32.									
33.									
Total Contractual	17,374,743		28.42%	18,810,868		27.18%	18,810,868		27.18%

REQUEST BY FUNDING SOURCE

Name of Agency : University of Southern Mississippi - Auxiliary

Specify Funding Sources As Shown Below	FY 2021 Actual Amount	% of Line Item	% of Total Budget	FY 2022 Estimated Amount	% of Line Item	% of Total Budget	FY 2023 Requested Amount	% of Line Item	% of Total Budget
1. General _____ State Support Special (Specify) _____									
2. Budget Contingency Fund									
3. Education Enhancement Fund									
4. Health Care Expendable Fund									
5. Tobacco Control Fund									
6. Capital Expense Fund									
7. Working Cash Stabilization Reserve Fund									
8. BP Settlement Fund									
9. Gulf Coast Restoration Fund									
10. Back To Business Mississippi Grant Fund									
11. MS COVID-19 Relief Payment Fund									
12. DFA CARES Act COVID-19 Fund									
13. MS Tourism Recovery Fund									
14. MS Nonprofit Museums Recovery Fund									
15. Equity in Distance Learning Fund									
16. Postsecondary Education COVID-19 Relief Grant Fund									
17. Independent Schools' COVID-19 Assistance Grant Fund									
18. MS Pandemic Response Broadband Availability Grant Program Fund									
19. MS Emergency Management Agency COVID-19 Fund									
20. MS Electric Cooperatives Broadband COVID-19 Grant Program Fund									
21. COVID-19 Broadband Provider Grant Program Fund									
22. Rental Assistance Grant Program Fund									
23. ICU Infrastructure Fund									
24. Poultry Farmer Stabilization Grant Program Fund									
25. Mississippi Supplemental CFAP Grant Program Fund									
26. Sweet Potato Farm Sustainment Grant Program Fund									
27. Coronavirus Local Fiscal Recovery Fund									
28. Coronavirus State Fiscal Recovery Fund									
29. Federal _____ Other Special (Specify) _____									
30. Sales & Services	10,594,750	100.00		13,758,341	100.00		13,758,341	100.00	
31.									
32.									
33.									
Total Commodities	10,594,750		17.33%	13,758,341		19.88%	13,758,341		19.88%

REQUEST BY FUNDING SOURCE

Name of Agency : University of Southern Mississippi - Auxiliary

Specify Funding Sources As Shown Below	FY 2021 Actual Amount	% of Line Item	% of Total Budget	FY 2022 Estimated Amount	% of Line Item	% of Total Budget	FY 2023 Requested Amount	% of Line Item	% of Total Budget
1. General _____ State Support Special (Specify) _____									
2. Budget Contingency Fund									
3. Education Enhancement Fund									
4. Health Care Expendable Fund									
5. Tobacco Control Fund									
6. Capital Expense Fund									
7. Working Cash Stabilization Reserve Fund									
8. BP Settlement Fund									
9. Gulf Coast Restoration Fund									
10. Back To Business Mississippi Grant Fund									
11. MS COVID-19 Relief Payment Fund									
12. DFA CARES Act COVID-19 Fund									
13. MS Tourism Recovery Fund									
14. MS Nonprofit Museums Recovery Fund									
15. Equity in Distance Learning Fund									
16. Postsecondary Education COVID-19 Relief Grant Fund									
17. Independent Schools' COVID-19 Assistance Grant Fund									
18. MS Pandemic Response Broadband Availability Grant Program Fund									
19. MS Emergency Management Agency COVID-19 Fund									
20. MS Electric Cooperatives Broadband COVID-19 Grant Program Fund									
21. COVID-19 Broadband Provider Grant Program Fund									
22. Rental Assistance Grant Program Fund									
23. ICU Infrastructure Fund									
24. Poultry Farmer Stabilization Grant Program Fund									
25. Mississippi Supplemental CFAP Grant Program Fund									
26. Sweet Potato Farm Sustainment Grant Program Fund									
27. Coronavirus Local Fiscal Recovery Fund									
28. Coronavirus State Fiscal Recovery Fund									
29. Federal _____ Other Special (Specify) _____									
30. Sales & Services				75,090	100.00		75,090	100.00	
31.									
32.									
33.									
Total Capital Other Than Equipment				75,090		0.11%	75,090		0.11%

REQUEST BY FUNDING SOURCE

Name of Agency : University of Southern Mississippi - Auxiliary

Specify Funding Sources As Shown Below	FY 2021 Actual Amount	% of Line Item	% of Total Budget	FY 2022 Estimated Amount	% of Line Item	% of Total Budget	FY 2023 Requested Amount	% of Line Item	% of Total Budget
1. General _____ State Support Special (Specify) _____									
2. Budget Contingency Fund									
3. Education Enhancement Fund									
4. Health Care Expendable Fund									
5. Tobacco Control Fund									
6. Capital Expense Fund									
7. Working Cash Stabilization Reserve Fund									
8. BP Settlement Fund									
9. Gulf Coast Restoration Fund									
10. Back To Business Mississippi Grant Fund									
11. MS COVID-19 Relief Payment Fund									
12. DFA CARES Act COVID-19 Fund									
13. MS Tourism Recovery Fund									
14. MS Nonprofit Museums Recovery Fund									
15. Equity in Distance Learning Fund									
16. Postsecondary Education COVID-19 Relief Grant Fund									
17. Independent Schools' COVID-19 Assistance Grant Fund									
18. MS Pandemic Response Broadband Availability Grant Program Fund									
19. MS Emergency Management Agency COVID-19 Fund									
20. MS Electric Cooperatives Broadband COVID-19 Grant Program Fund									
21. COVID-19 Broadband Provider Grant Program Fund									
22. Rental Assistance Grant Program Fund									
23. ICU Infrastructure Fund									
24. Poultry Farmer Stabilization Grant Program Fund									
25. Mississippi Supplemental CFAP Grant Program Fund									
26. Sweet Potato Farm Sustainment Grant Program Fund									
27. Coronavirus Local Fiscal Recovery Fund									
28. Coronavirus State Fiscal Recovery Fund									
29. Federal _____ Other Special (Specify) _____									
30. Sales & Services	88,592	100.00		116,150	100.00		116,150	100.00	
31.									
32.									
33.									
Total Capital Equipment	88,592		0.14%	116,150		0.17%	116,150		0.17%

REQUEST BY FUNDING SOURCE

Name of Agency : University of Southern Mississippi - Auxiliary

Specify Funding Sources As Shown Below	FY 2021 Actual Amount	% of Line Item	% of Total Budget	FY 2022 Estimated Amount	% of Line Item	% of Total Budget	FY 2023 Requested Amount	% of Line Item	% of Total Budget
1. General _____ State Support Special (Specify) _____									
2. Budget Contingency Fund									
3. Education Enhancement Fund									
4. Health Care Expendable Fund									
5. Tobacco Control Fund									
6. Capital Expense Fund									
7. Working Cash Stabilization Reserve Fund									
8. BP Settlement Fund									
9. Gulf Coast Restoration Fund									
10. Back To Business Mississippi Grant Fund									
11. MS COVID-19 Relief Payment Fund									
12. DFA CARES Act COVID-19 Fund									
13. MS Tourism Recovery Fund									
14. MS Nonprofit Museums Recovery Fund									
15. Equity in Distance Learning Fund									
16. Postsecondary Education COVID-19 Relief Grant Fund									
17. Independent Schools' COVID-19 Assistance Grant Fund									
18. MS Pandemic Response Broadband Availability Grant Program Fund									
19. MS Emergency Management Agency COVID-19 Fund									
20. MS Electric Cooperatives Broadband COVID-19 Grant Program Fund									
21. COVID-19 Broadband Provider Grant Program Fund									
22. Rental Assistance Grant Program Fund									
23. ICU Infrastructure Fund									
24. Poultry Farmer Stabilization Grant Program Fund									
25. Mississippi Supplemental CFAP Grant Program Fund									
26. Sweet Potato Farm Sustainment Grant Program Fund									
27. Coronavirus Local Fiscal Recovery Fund									
28. Coronavirus State Fiscal Recovery Fund									
29. Federal _____ Other Special (Specify) _____									
30. Sales & Services									
31.									
32.									
33.									
Total Vehicles									

REQUEST BY FUNDING SOURCE

Name of Agency : University of Southern Mississippi - Auxiliary

Specify Funding Sources As Shown Below	FY 2021 Actual Amount	% of Line Item	% of Total Budget	FY 2022 Estimated Amount	% of Line Item	% of Total Budget	FY 2023 Requested Amount	% of Line Item	% of Total Budget
1. General _____ State Support Special (Specify) _____									
2. Budget Contingency Fund									
3. Education Enhancement Fund									
4. Health Care Expendable Fund									
5. Tobacco Control Fund									
6. Capital Expense Fund									
7. Working Cash Stabilization Reserve Fund									
8. BP Settlement Fund									
9. Gulf Coast Restoration Fund									
10. Back To Business Mississippi Grant Fund									
11. MS COVID-19 Relief Payment Fund									
12. DFA CARES Act COVID-19 Fund									
13. MS Tourism Recovery Fund									
14. MS Nonprofit Museums Recovery Fund									
15. Equity in Distance Learning Fund									
16. Postsecondary Education COVID-19 Relief Grant Fund									
17. Independent Schools' COVID-19 Assistance Grant Fund									
18. MS Pandemic Response Broadband Availability Grant Program Fund									
19. MS Emergency Management Agency COVID-19 Fund									
20. MS Electric Cooperatives Broadband COVID-19 Grant Program Fund									
21. COVID-19 Broadband Provider Grant Program Fund									
22. Rental Assistance Grant Program Fund									
23. ICU Infrastructure Fund									
24. Poultry Farmer Stabilization Grant Program Fund									
25. Mississippi Supplemental CFAP Grant Program Fund									
26. Sweet Potato Farm Sustainment Grant Program Fund									
27. Coronavirus Local Fiscal Recovery Fund									
28. Coronavirus State Fiscal Recovery Fund									
29. Federal _____ Other Special (Specify) _____									
30. Sales & Services									
31.									
32.									
33.									
Total Wireless Communication Devs.									

REQUEST BY FUNDING SOURCE

Name of Agency : University of Southern Mississippi - Auxiliary

Specify Funding Sources As Shown Below	FY 2021 Actual Amount	% of Line Item	% of Total Budget	FY 2022 Estimated Amount	% of Line Item	% of Total Budget	FY 2023 Requested Amount	% of Line Item	% of Total Budget
1. General _____ State Support Special (Specify) _____									
2. Budget Contingency Fund									
3. Education Enhancement Fund									
4. Health Care Expendable Fund									
5. Tobacco Control Fund									
6. Capital Expense Fund									
7. Working Cash Stabilization Reserve Fund									
8. BP Settlement Fund									
9. Gulf Coast Restoration Fund									
10. Back To Business Mississippi Grant Fund									
11. MS COVID-19 Relief Payment Fund									
12. DFA CARES Act COVID-19 Fund									
13. MS Tourism Recovery Fund									
14. MS Nonprofit Museums Recovery Fund									
15. Equity in Distance Learning Fund									
16. Postsecondary Education COVID-19 Relief Grant Fund									
17. Independent Schools' COVID-19 Assistance Grant Fund									
18. MS Pandemic Response Broadband Availability Grant Program Fund									
19. MS Emergency Management Agency COVID-19 Fund									
20. MS Electric Cooperatives Broadband COVID-19 Grant Program Fund									
21. COVID-19 Broadband Provider Grant Program Fund									
22. Rental Assistance Grant Program Fund									
23. ICU Infrastructure Fund									
24. Poultry Farmer Stabilization Grant Program Fund									
25. Mississippi Supplemental CFAP Grant Program Fund									
26. Sweet Potato Farm Sustainment Grant Program Fund									
27. Coronavirus Local Fiscal Recovery Fund									
28. Coronavirus State Fiscal Recovery Fund									
29. Federal _____ Other Special (Specify) _____									
30. Sales & Services	11,697,326	100.00		11,715,894	100.00		11,715,894	100.00	
31.									
32.									
33.									
Total Subsidies	11,697,326		19.13%	11,715,894		16.93%	11,715,894		16.93%

REQUEST BY FUNDING SOURCE

Name of Agency : University of Southern Mississippi - Auxiliary

Specify Funding Sources As Shown Below	FY 2021 Actual Amount	% of Line Item	% of Total Budget	FY 2022 Estimated Amount	% of Line Item	% of Total Budget	FY 2023 Requested Amount	% of Line Item	% of Total Budget
1. General _____ State Support Special (Specify) _____									
2. Budget Contingency Fund									
3. Education Enhancement Fund									
4. Health Care Expendable Fund									
5. Tobacco Control Fund									
6. Capital Expense Fund									
7. Working Cash Stabilization Reserve Fund									
8. BP Settlement Fund									
9. Gulf Coast Restoration Fund									
10. Back To Business Mississippi Grant Fund									
11. MS COVID-19 Relief Payment Fund									
12. DFA CARES Act COVID-19 Fund									
13. MS Tourism Recovery Fund									
14. MS Nonprofit Museums Recovery Fund									
15. Equity in Distance Learning Fund									
16. Postsecondary Education COVID-19 Relief Grant Fund									
17. Independent Schools' COVID-19 Assistance Grant Fund									
18. MS Pandemic Response Broadband Availability Grant Program Fund									
19. MS Emergency Management Agency COVID-19 Fund									
20. MS Electric Cooperatives Broadband COVID-19 Grant Program Fund									
21. COVID-19 Broadband Provider Grant Program Fund									
22. Rental Assistance Grant Program Fund									
23. ICU Infrastructure Fund									
24. Poultry Farmer Stabilization Grant Program Fund									
25. Mississippi Supplemental CFAP Grant Program Fund									
26. Sweet Potato Farm Sustainment Grant Program Fund									
27. Coronavirus Local Fiscal Recovery Fund									
28. Coronavirus State Fiscal Recovery Fund									
29. Federal _____ Other Special (Specify) _____									
30. Sales & Services	61,144,726	100.00		69,211,875	100.00		69,211,875	100.00	
31.									
32.									
33.									
TOTAL	61,144,726		100.00%	69,211,875		100.00%	69,211,875		100.00%

SPECIAL FUNDS DETAIL

University of Southern Mississippi - Auxiliary (268-01)

Name of Agency

S. STATE SUPPORT SPECIAL FUNDS		(1) Actual Revenues FY 2021	(2) Estimated Revenues FY 2022	(3) Requested Revenues FY 2023
Source (Fund Number)	Detailed Description of Source			
Budget Contingency Fund	BCF - Budget Contingency Fund			
Education Enhancement Fund	EEF - Education Enhancement Fund			
Health Care Expendable Fund	HCEF - Health Care Expendable Fund			
Tobacco Control Fund	TCF - Tobacco Control Fund			
Capital Expense Fund	CEF - Capital Expense Fund			
Working Cash Stabilization Reserve Fund	WCSRFB - Working Cash Stabilization Reserve Fund			
BP Settlement Fund	BPSF - BP Settlement Fund			
Gulf Coast Restoration Fund	GCRF - Gulf Coast Restoration Fund			
Back To Business Mississippi Grant Fund	BTBMGF - Back To Business Mississippi Grant Fund			
MS COVID-19 Relief Payment Fund	MCRPF - MS COVID-19 Relief Payment Fund			
DFA CARES Act COVID-19 Fund	DCACF - DFA CARES Act COVID-19 Fund			
MS Tourism Recovery Fund	MTRF - MS Tourism Recovery Fund			
MS Nonprofit Museums Recovery Fund	MNMRF - MS Nonprofit Museums Recovery Fund			
Equity in Distance Learning Fund	EIDLF - Equity in Distance Learning Fund			
Postsecondary Education COVID-19 Relief Grant Fund	PECMRGF - Postsecondary Education COVID-19 Relief Grant Fund			
Independent Schools' COVID-19 Assistance Grant Fund	ISCAGF - Independent Schools' COVID-19 Assistance Grant Fund			
MS Pandemic Response Broadband Availability Grant Program Fund	MPRBAGPF - MS Pandemic Response Broadband Availability Grant Program Fund			
MS Emergency Management Agency COVID-19 Fund	MEMACF - MS Emergency Management Agency COVID-19 Fund			
MS Electric Cooperatives Broadband COVID-19 Grant Program Fund	MECBCGPF - MS Electric Cooperatives Broadband COVID-19 Grant Program Fund			
COVID-19 Broadband Provider Grant Program Fund	CBPGPF - COVID-19 Broadband Provider Grant Program Fund			
Rental Assistance Grant Program Fund	RAGPF - Rental Assistance Grant Program Fund			
ICU Infrastructure Fund	IIF - ICU Infrastructure Fund			
Poultry Farmer Stabilization Grant Program Fund	PFSGPF - Poultry Farmer Stabilization Grant Program Fund			
Mississippi Supplemental CFAP Grant Program Fund	MSCGPF - Mississippi Supplemental CFAP Grant Program Fund			
Sweet Potato Farm Sustainment Grant Program Fund	SPFSGPF - Sweet Potato Farm Sustainment Grant Program Fund			
Coronavirus Local Fiscal Recovery Fund	CLFRF - Coronavirus Local Fiscal Recovery Fund			
Coronavirus State Fiscal Recovery Fund	CSFRF - Coronavirus State Fiscal Recovery Fund			
State Support Special Fund TOTAL				
STATE SUPPORT SPECIAL FUND LAPSE				

A. FEDERAL FUNDS *		Percentage Match Requirement	(1) Actual Revenues FY 2021	(2) Estimated Revenues FY 2022	(3) Requested Revenues FY 2023
Source (Fund Number)	Detailed Description of Source	FY 2022 FY 2023			
	Cash Balance-Unencumbered				
Federal Fund TOTAL					

SPECIAL FUNDS DETAIL

University of Southern Mississippi - Auxiliary (268-01)

Name of Agency

B. OTHER SPECIAL FUNDS (NON-FED'L)		(1) Actual Revenues FY 2021	(2) Estimated Revenues FY 2022	(3) Requested Revenues FY 2023
Source (Fund Number)	Detailed Description of Source			
	Cash Balance-Unencumbered			
Sales & Services ()		61,144,726	69,211,875	69,211,875
Other Special Fund TOTAL		61,144,726	69,211,875	69,211,875

SECTIONS S + A + B TOTAL		61,144,726	69,211,875	69,211,875
---------------------------------	--	-------------------	-------------------	-------------------

C. TREASURY FUND/BANK ACCOUNTS *			(1) Reconciled Balance as of 6/30/21	(2) Balance as of 6/30/22	(3) Balance as of 6/30/23
Name of Fund/Account	Fund/Account Number	Name of Bank (If Applicable)			

* Any non-federal funds that have restricted uses must be identified and narrative of restrictions attached.

**NARRATIVE OF SPECIAL FUNDS DETAIL AND TREASURY
FUND/BANK ACCOUNTS**

University of Southern Mississippi - Auxiliary (268-01)

Name of Agency

STATE SUPPORT SPECIAL FUNDS

NA

FEDERAL FUNDS

NA

OTHER SPECIAL FUNDS

The University of Southern Mississippi's auxiliary enterprises are self-supporting entities. The larger auxiliaries include Residence Life, Moffitt Health Center, Recreational Sports, Intercollegiate Athletics, and Parking and Transit Services. These entities generate revenues from sales and services to the university community.

TREASURY FUND / BANK

See Hattiesburg MBR

CONTINUATION AND EXPANDED TOTAL REQUEST

University of Southern Mississippi - Auxiliary (268-01)

SUMMARY OF ALL PROGRAMS

Name of Agency

Program

	FY 2021 Actual				
	(1) General	(2) State Support Special	(3) Federal	(4) Other Special	(5) Total
Salaries,Wages & Fringe				19,502,493	19,502,493
Travel				1,886,822	1,886,822
Contractual Services				17,374,743	17,374,743
Commodities				10,594,750	10,594,750
Other Than Equipment					
Equipment				88,592	88,592
Vehicles					
Wireless Communication Devices					
Subsidies, Loans & Grants				11,697,326	11,697,326
Total				61,144,726	61,144,726
No. of Positions (FTE)	381.00				381.00

	FY 2022 Estimated				
	(6) General	(7) State Support Special	(8) Federal	(9) Other Special	(10) Total
Salaries,Wages & Fringe				21,304,415	21,304,415
Travel				3,431,117	3,431,117
Contractual Services				18,810,868	18,810,868
Commodities				13,758,341	13,758,341
Other Than Equipment				75,090	75,090
Equipment				116,150	116,150
Vehicles					
Wireless Communication Devices					
Subsidies, Loans & Grants				11,715,894	11,715,894
Total				69,211,875	69,211,875
No. of Positions (FTE)	386.00				386.00

	FY 2023 Increase/Decrease for Continuation				
	(11) General	(12) State Support Special	(13) Federal	(14) Other Special	(15) Total
Salaries,Wages & Fringe					
Travel					
Contractual Services					
Commodities					
Other Than Equipment					
Equipment					
Vehicles					
Wireless Communication Devices					
Subsidies, Loans & Grants					
Total					
No. of Positions (FTE)					

Note: FY2023 Total Request = FY2022 Estimated + FY2023 Incr(Decr) for Continuation + FY2023 Expansion/Reduction of Existing Activities + FY2023 New Activities.

CONTINUATION AND EXPANDED TOTAL REQUEST

University of Southern Mississippi - Auxiliary (268-01)

SUMMARY OF ALL PROGRAMS

Name of Agency	Program				
	FY 2023 Expansion/Reduction of Existing Activities				
	(16) General	(17) State Support Special	(18) Federal	(19) Other Special	(20) Total
Salaries,Wages & Fringe					
Travel					
Contractual Services					
Commodities					
Other Than Equipment					
Equipment					
Vehicles					
Wireless Communication Devices					
Subsidies, Loans & Grants					
Total					
No. of Positions (FTE)					

	FY 2023 New Activities (*)				
	(21) General	(22) State Support Special	(23) Federal	(24) Other Special	(25) Total
Salaries,Wages & Fringe					
Travel					
Contractual Services					
Commodities					
Other Than Equipment					
Equipment					
Vehicles					
Wireless Communication Devices					
Subsidies, Loans & Grants					
Total					
No. of Positions (FTE)					

	FY 2023 Total Request				
	(26) General	(27) State Support Special	(28) Federal	(29) Other Special	(30) Total
Salaries,Wages & Fringe				21,304,415	21,304,415
Travel				3,431,117	3,431,117
Contractual Services				18,810,868	18,810,868
Commodities				13,758,341	13,758,341
Other Than Equipment				75,090	75,090
Equipment				116,150	116,150
Vehicles					
Wireless Communication Devices					
Subsidies, Loans & Grants				11,715,894	11,715,894
Total				69,211,875	69,211,875
No. of Positions (FTE)	386.00				386.00

Note: FY2023 Total Request = FY2022 Estimated + FY2023 Incr(Decr) for Continuation + FY2023 Expansion/Reduction of Existing Activities + FY2023 New Activities.

**SUMMARY OF PROGRAMS
FORM MBR-1-03sum**

University of Southern Mississippi - Auxiliary (268-01)

Name of Agency

FUNDING REQUESTED FISCAL YEAR 2023

	PROGRAM	GENERAL	ST. SUPP. SPECIAL	FEDERAL	OTHER SPECIAL	TOTAL
1.	Auxiliary Enterprises				69,211,875	69,211,875
	Summary of All Programs				69,211,875	69,211,875

CONTINUATION AND EXPANDED REQUEST

Program 1 of 1
Auxiliary Enterprises

University of Southern Mississippi - Auxiliary (268-01)

Name of Agency	FY 2021 Actual				
	(1) General	(2) State Support Special	(3) Federal	(4) Other Special	(5) Total
Salaries,Wages & Fringe				19,502,493	19,502,493
Travel				1,886,822	1,886,822
Contractual Services				17,374,743	17,374,743
Commodities				10,594,750	10,594,750
Other Than Equipment					
Equipment				88,592	88,592
Vehicles					
Wireless Communication Devices					
Subsidies, Loans & Grants				11,697,326	11,697,326
Total				61,144,726	61,144,726
No. of Positions (FTE)	381.00				381.00

	FY 2022 Estimated				
	(6) General	(7) State Support Special	(8) Federal	(9) Other Special	(10) Total
Salaries,Wages & Fringe				21,304,415	21,304,415
Travel				3,431,117	3,431,117
Contractual Services				18,810,868	18,810,868
Commodities				13,758,341	13,758,341
Other Than Equipment				75,090	75,090
Equipment				116,150	116,150
Vehicles					
Wireless Communication Devices					
Subsidies, Loans & Grants				11,715,894	11,715,894
Total				69,211,875	69,211,875
No. of Positions (FTE)	386.00				386.00

	FY 2023 Increase/Decrease for Continuation				
	(11) General	(12) State Support Special	(13) Federal	(14) Other Special	(15) Total
Salaries,Wages & Fringe					
Travel					
Contractual Services					
Commodities					
Other Than Equipment					
Equipment					
Vehicles					
Wireless Communication Devices					
Subsidies, Loans & Grants					
Total					
No. of Positions (FTE)					

Note: FY2023 Total Request = FY2022 Estimated + FY2023 Incr(Decr) for Continuation + FY2023 Expansion/Reduction of Existing Activities + FY2023 New Activities.

CONTINUATION AND EXPANDED REQUEST

Program 1 of 1
Auxiliary Enterprises

University of Southern Mississippi - Auxiliary (268-01)

Name of Agency	FY 2023 Expansion/Reduction of Existing Activities				
	(16) General	(17) State Support Special	(18) Federal	(19) Other Special	(20) Total
Salaries,Wages & Fringe					
Travel					
Contractual Services					
Commodities					
Other Than Equipment					
Equipment					
Vehicles					
Wireless Communication Devices					
Subsidies, Loans & Grants					
Total					
No. of Positions (FTE)					

	FY 2023 New Activities (*)				
	(21) General	(22) State Support Special	(23) Federal	(24) Other Special	(25) Total
Salaries,Wages & Fringe					
Travel					
Contractual Services					
Commodities					
Other Than Equipment					
Equipment					
Vehicles					
Wireless Communication Devices					
Subsidies, Loans & Grants					
Total					
No. of Positions (FTE)					

	FY 2023 Total Request				
	(26) General	(27) State Support Special	(28) Federal	(29) Other Special	(30) Total
Salaries,Wages & Fringe				21,304,415	21,304,415
Travel				3,431,117	3,431,117
Contractual Services				18,810,868	18,810,868
Commodities				13,758,341	13,758,341
Other Than Equipment				75,090	75,090
Equipment				116,150	116,150
Vehicles					
Wireless Communication Devices					
Subsidies, Loans & Grants				11,715,894	11,715,894
Total				69,211,875	69,211,875
No. of Positions (FTE)	386.00				386.00

Note: FY2023 Total Request = FY2022 Estimated + FY2023 Incr(Decr) for Continuation + FY2023 Expansion/Reduction of Existing Activities + FY2023 New Activities.

PROGRAM DECISION UNITS

University of Southern Mississippi - Auxiliary

1 - Auxiliary Enterprises

Name of Agency

Program Name

	A	B	C	D	E			
EXPENDITURES	FY 2022 Appropriated	Escalations By DFA	Non-Recurring Items	Total Funding Change	FY 2023 Total Request			
SALARIES	21,304,415				21,304,415			
GENERAL								
ST. SUP. SPECIAL								
FEDERAL								
OTHER	21,304,415				21,304,415			
TRAVEL	3,431,117				3,431,117			
GENERAL								
ST. SUP. SPECIAL								
FEDERAL								
OTHER	3,431,117				3,431,117			
CONTRACTUAL	18,810,868				18,810,868			
GENERAL								
ST. SUP. SPECIAL								
FEDERAL								
OTHER	18,810,868				18,810,868			
COMMODITIES	13,758,341				13,758,341			
GENERAL								
ST. SUP. SPECIAL								
FEDERAL								
OTHER	13,758,341				13,758,341			
CAPTITAL-OTE	75,090				75,090			
GENERAL								
ST. SUP. SPECIAL								
FEDERAL								
OTHER	75,090				75,090			
EQUIPMENT	116,150				116,150			
GENERAL								
ST. SUP. SPECIAL								
FEDERAL								
OTHER	116,150				116,150			
VEHICLES								
GENERAL								
ST. SUP. SPECIAL								
FEDERAL								
OTHER								
WIRELESS DEV								
GENERAL								
ST. SUP. SPECIAL								
FEDERAL								
OTHER								
SUBSIDIES	11,715,894				11,715,894			
GENERAL								
ST. SUP. SPECIAL								
FEDERAL								
OTHER	11,715,894				11,715,894			
TOTAL	69,211,875				69,211,875			

FUNDING

GENERAL FUNDS								
ST. SUP. SPCL FUNDS								
FEDERAL FUNDS								
OTHER SP. FUNDS	69,211,875				69,211,875			
TOTAL	69,211,875				69,211,875			

POSITIONS

GENERAL FTE	386.00				386.00			
ST. SUP. SPCL. FTE								
FEDERAL FTE								
OTHER SP. FTE								
TOTAL	386.00				386.00			

PRIORITY LEVEL :

--	--	--	--	--	--	--	--	--

PROGRAM NARRATIVE

Program Data Collected in Accordance with the Mississippi Performance Budget and Strategic Planning Act of 1994
(To Accompany Form MBR-1-03)

University of Southern Mississippi - Auxiliary

1 - Auxiliary Enterprises

Name of Agency

Program Name

I. Program Description:

The University of Southern Mississippi's auxiliary enterprises are self-supporting entities. The larger auxiliaries include Residence Life, Moffitt Health Center, Recreational Sports, Intercollegiate Athletics, and Parking and Transit Services. These entities generate revenues from sales and services to the university community.

II. Program Objective:

To provide services to the University community, including faculty, staff, students, alumni, and friends.

Elements of Quality Program Design

For the Evaluation of Requests to Fund New Programs or New Activity in an Existing Program
(To Accompany Form MBR-1-03A)

PROGRAM PERFORMANCE MEASURES

Program Data Collected in Accordance with the Mississippi Performance Budget and Strategic Planning Act of 1994

PROGRAM 3% GENERAL FUND REDUCTION AND NARRATIVE EXPLANATION

University of Southern Mississippi - Auxiliary (268-01)

	Fiscal Year 2022 Funding			FY 2022 GF PERCENT REDUCED
	Total Funds	Reduced Amount	Reduced Funding Amount	

Program Name: (1) Auxiliary Enterprises				
General				
State Support Special				
Federal				
Other Special	69,211,875		69,211,875	
TOTAL	69,211,875		69,211,875	

Narrative Explanation:

Program Name: (99) Summary of All Programs				
General				
State Support Special				
Federal				
Other Special	69,211,875		69,211,875	
TOTAL	69,211,875		69,211,875	

BOARD OF TRUSTEES OF STATE INSTITUTIONS OF HIGHER LEARNING MEMBERS

University of Southern Mississippi - Auxiliary (268-01)
Name of Agency

A. Explain Rate and manner in which board members are reimbursed:

Board members are reimbursed through the Institution of Higher Learning System Administration budget with a per diem of \$40 plus expenses.

B. Estimated number of meetings FY 2022:

12 (Twelve)

C. Board Members	City, Town, Residence	Appointed By	Date Appointed	Length of Term
1. Dr. Alfred E. McNair, Jr.	Ocean Springs, MS	Bryant	05/08/2015	9 years
2. Dr. J. Walt Starr	Columbus, MS	Bryant	05/08/2015	9 years
3. Mr. Chip Morgan	Leland, MS	Bryant	05/08/2015	9 years
4. Mr. Tom Duff	Hattiesburg, MS	Bryant	05/08/2015	9 years
5. Dr. Steven Cunningham	Hattiesburg, MS	Bryant	05/08/2018	9 years
6. Mr. Bruce Martin	Meridian, MS	Bryant	05/08/2018	9 years
7. Mr. Powell G. Ogletree	Ridgeland, MS	Bryant	05/08/2018	9 years
8. Ms. Jeanne Carter Luckey	Ocean Springs, MS	Bryant	05/08/2018	9 years
9. Dr. Ormella Cummings	Tupelo, MS	Reeves	05/18/2021	9 years
10. Mr. Gregg Rader	Columbus, MS	Reeves	05/18/2021	9 years
11. Mr. Hal Parker	Bolton, MS	Reeves	05/18/2021	9 years
12. Ms. Teresa Hubbard	Oxford, MS	Reeves	05/18/2021	9 years

Identify Statutory Authority (Code Section or Executive Order Number)*

Constitutional Amendment 213A of the Constitution of the State of Mississippi.

*If Executive Order, please attach copy.

**SCHEDULE B
CONTRACTUAL SERVICES**

University of Southern Mississippi - Auxiliary (268-01)

Name of Agency

MINOR OBJECT OF EXPENDITURE	(1) Actual Expenses FY Ending June 30, 2021	(2) Estimated Expenses FY Ending June 30, 2022	(3) Requested for FY Ending June 30, 2023
A. Tuition, Rewards & Awards (61050xxx-61080xxx)			
5125 Waivers	175,604	180,000	180,000
5130 Scholarships	6,654,731	6,800,000	6,800,000
5140 Awards	3,799	5,000	5,000
Total	6,834,134	6,985,000	6,985,000
B. Transportation & Utilities (61100xxx-61200xxx)			
5200 IB Cont Svcs Comcat	23,593	26,000	26,000
5210 Postage And Post Office Charge	22,179	25,000	25,000
5220 Telephone Local Service	179,911	200,000	200,000
5230 Telephone Long Distance	7,033	10,000	10,000
5240 Telephone Installation And Maintenance	1,020	1,500	1,500
5245 Telephone Cellular	6,359	8,000	8,000
5247 Internet	21,167	25,000	25,000
5250 Cable TV	255,057	265,000	265,000
5260 Transportation Of Things	12,549	15,000	15,000
5310 Utilities - Electricity	2,058,659	2,100,000	2,100,000
5320 Utilities - Heat	521,708	540,000	540,000
5330 Utilities - Water	654,940	660,000	660,000
5360 Reimbursement Utilities - Outsourcing Cont.	(11,659)	(11,659)	(11,659)
5694 iTech Contractual Services	19,333	25,000	25,000
Total	3,771,849	3,888,841	3,888,841
C. Public Information (61300xxx-6131xxxx)			
5410 Advertising	92,755	120,000	120,000
5420 Publicity And Public Information	1,120	3,169	3,169
Total	93,875	123,169	123,169
D. Rents (61400xxx-61490xxx)			
5401 IB Cont Svcs Facility Rental	56,146	70,000	70,000
5510 Rental Of Building And Floor Space	19,436	30,000	30,000
5520 Rental of Land	8,400	20,000	20,000
5530 Rental Of Office Equipment	50,859	60,000	60,000
5545 Computer Usage Charges	109	300	300
5579 Tech A/V & Computer Rental Inc	1,325	1,500	1,500
5590 Other Rental	90,222	100,000	100,000
Total	226,497	281,800	281,800

**SCHEDULE B
CONTRACTUAL SERVICES**

University of Southern Mississippi - Auxiliary (268-01)

Name of Agency

MINOR OBJECT OF EXPENDITURE	(1) Actual Expenses FY Ending June 30, 2021	(2) Estimated Expenses FY Ending June 30, 2022	(3) Requested for FY Ending June 30, 2023
E. Repairs & Service (61500xxx)			
5620 Repair And Svc - Buildings And	(1,290)	(1,290)	(1,290)
5640 Repair And Svc Vehicles	37	500	500
5650 Repair And Svcg Office Equipment	1,288	5,000	5,000
5660 Maintenance Contracts - Equipment	19,633	25,000	25,000
5690 Repair And Svcg Other Equipment	158,323	175,000	175,000
5695 Physical Plant Contractual Services	959,583	1,000,000	1,000,000
5700 IB Cont Svcs Professional	78,488	100,000	100,000
5740 Medical	235,037	250,000	250,000
Total	1,451,099	1,554,210	1,554,210
F. Fees, Professional & Other Services (6161xxxx-61699xxx)			
6057 Fees	612,740	872,400	872,400
Total	612,740	872,400	872,400
G. Other Contractual Services (61700xxx-61790xxx, 61900xxx)			
5792 Event Staff At Athletic Events	173,146	200,000	200,000
5795 Police Department Special Duty	6,112	10,000	10,000
5810 Insurance And Fidelity Bonds	402,950	450,000	450,000
5811 RA Health Insurance	209,257	250,000	250,000
5820 Dues	349,427	365,000	365,000
5830 Laundry, Dry Clean and Towel Service	74,947	80,000	80,000
5840 Subscriptions	87,553	91,500	91,500
5850 Payments to Visiting Athletic	407,640	420,000	420,000
5860 Employee Recruitment Costs	4,108	7,000	7,000
5861 Game Officials	434,112	550,000	550,000
5865 Employee Moving	85,614	100,000	100,000
Total	2,234,866	2,523,500	2,523,500
H. Information Technology (61800xxx-61890xxx)			
5870 Computer Software Acquisitions	164,028	200,000	200,000
5880 Computer Software Maintenance	137,749	150,000	150,000
Total	301,777	350,000	350,000
I. Other (61910xxx-61990xxx)			
5400 Int Billing Cont Services	44,377	50,000	50,000
5890 Other Contractual Services	1,021,718	1,400,000	1,400,000
5891 Provision For Bad Debts	784,256	784,256	784,256
5965 Other Contractual - Equip reclass	(4,308)	(4,308)	(4,308)

**SCHEDULE B
CONTRACTUAL SERVICES**

University of Southern Mississippi - Auxiliary (268-01)

Name of Agency

MINOR OBJECT OF EXPENDITURE	(1) Actual Expenses FY Ending June 30, 2021	(2) Estimated Expenses FY Ending June 30, 2022	(3) Requested for FY Ending June 30, 2023
5995 Refunds and Adjustments	1,863	2,000	2,000
Total	1,847,906	2,231,948	2,231,948
Grand Total <i>(Enter on Line 1-B of Form MBR-1)</i>	17,374,743	18,810,868	18,810,868
Funding Summary:			
General Funds			
State Support Special Funds			
Federal Funds			
Other Special Funds	17,374,743	18,810,868	18,810,868
Total Funds	17,374,743	18,810,868	18,810,868

**SCHEDULE C
COMMODITIES**

University of Southern Mississippi - Auxiliary (268-01)

Name of Agency

MINOR OBJECT OF EXPENDITURE	(1) Actual Expenses FY Ending June 30, 2021	(2) Estimated Expenses FY Ending June 30, 2022	(3) Requested for FY Ending June 30, 2023
A. Maintenance & Constr. Materials & Supplies (62000xxx, 62015xxx)			
6020 Building Construction Supplies	(34,446)	75,000	75,000
6030 Paints And Preservatives	7,869	25,000	25,000
6040 Hardware, Plumbing, & Electrical	9,420	30,000	30,000
6050 Custodial Supplies & Cleaning	104,771	200,000	200,000
6090 Other Maintenance Materials	136,339	300,000	300,000
Total	223,953	630,000	630,000
B. Printing & Office Supplies & Materials (62010xxx, 62085xxx, 62100xxx, 62125xxx, 62400xxx)			
6110 Printing, Binding And Padding	67,270	100,000	100,000
6114 Specialty Printing 1	56,470	85,000	85,000
6115 Specialty Printing 2	1,380	5,000	5,000
6120 Duplication And Reproduction	834	3,000	3,000
6130 Office Supplies And Materials	59,431	75,000	75,000
6140 Purchased Instructional Materials	1,427	5,000	5,000
Total	186,812	273,000	273,000
C. Equipment Repair Parts, Supplies & Acces. (6205xxxx, 62072xxx, 62110xxx, 62115xxx, 62120xxx, 62130xxx)			
6210 Fuels	77,356	125,000	125,000
6220 Lubricating Oils And Greases	195	5,000	5,000
6240 Repair And Replacement Parts	56,789	100,000	100,000
6250 Shop Supplies	9,677	25,000	25,000
6290 Other Equipment Repair Parts and Supplies	43,332	75,000	75,000
6410 Small Tools	3,949	10,000	10,000
6415 Data Processing Equip < \$5000	66,594	85,000	85,000
6416 Radio TV Equip < \$5000	15,579	30,000	30,000
6418 Other Equip < \$5000	30,382	75,000	75,000
6419 Tech HW/Equip Inc	2,570	10,000	10,000
6480 Food Service Expendable Equipment	2,269	15,000	15,000
6495 Furniture & Equipment Under \$1000	173,268	250,000	250,000
6496 Computer, Camera & TV Under \$250	2,014	40,000	40,000
Total	483,974	845,000	845,000
D. Professional & Sci. Supplies and Materials (62025xxx, 62030xxx, 62070xxx, 62095xxx, 62105xxx, 6212xxxx)			
5350 Other Chemicals	2,476	5,000	5,000
6310 Laboratory And Testing Supplies	82,872	100,000	100,000
6315 Infectious Disease Supplies	16,751	20,000	20,000
6320 Photographic & Reproduction Supplies	3,364	5,000	5,000

**SCHEDULE C
COMMODITIES**

University of Southern Mississippi - Auxiliary (268-01)

Name of Agency

MINOR OBJECT OF EXPENDITURE	(1) Actual Expenses FY Ending June 30, 2021	(2) Estimated Expenses FY Ending June 30, 2022	(3) Requested for FY Ending June 30, 2023
6330 Drugs & Chemicals For Medical	(1,942)	(1,942)	(1,942)
Total	103,521	128,058	128,058
E. Other Supplies & Materials (62005xxx, 62015xxx, 62020xxx, 62035xxx, 62040xxx, 62045xxx, 62060xxx, 62065xxx, 62075xxx-62080xxx, 62090xxx, 62115xxx, 62135xxx, 62140xxx, 62405xxx, 62415xxx, 62500xxx-62999xxx)			
6430 Clothes And Dry Goods for Persons	555,810	650,000	650,000
6440 Food For Persons	676,342	782,283	782,283
6479 Tech A/V Supplies And Material	16,842	25,000	25,000
6490 Other Supplies And Materials	451,199	1,000,000	1,000,000
6498 P Card Purchase Commodities	446	20,000	20,000
6519 Merch for Resale - Postage	233,623	240,000	240,000
6520 Merch for Resale - Food	4,000	500,000	500,000
6550 Merch for Resale - Electricity	5,064,956	5,100,000	5,100,000
6551 Merch For Resale - Gas	1,538,071	2,000,000	2,000,000
6553 Merch For Resale - Water	464,944	560,000	560,000
6600 Int Billing Commodities	2,063	5,000	5,000
6900 Merchandise For Resale - General	588,194	1,000,000	1,000,000
Total	9,596,490	11,882,283	11,882,283
Grand Total <i>(Enter on Line 1-C of Form MBR-1)</i>	10,594,750	13,758,341	13,758,341
Funding Summary:			
General Funds			
State Support Special Funds			
Federal Funds			
Other Special Funds	10,594,750	13,758,341	13,758,341
Total Funds	10,594,750	13,758,341	13,758,341

**SCHEDULE D-1
CAPITAL OUTLAY
OTHER THAN EQUIPMENT**

University of Southern Mississippi - Auxiliary (268-01)
Name of Agency _____

MINOR OBJECT OF EXPENDITURE	(1) Actual Expenses FY Ending June 30, 2021	(2) Estimated Expenses FY Ending June 30, 2022	(3) Requested for FY Ending June 30, 2023
-----------------------------	--	---	--

B. Buildings & Improvements (63100xxx)			
Building & Improvements Building & Improvements		75,090	75,090
Total		75,090	75,090

Grand Total <i>(Enter on Line 1-D-1 of Form MBR-1)</i>		75,090	75,090
--	--	---------------	---------------

Funding Summary:			
General Funds			
State Support Special Funds			
Federal Funds			
Other Special Funds		75,090	75,090
Total Funds		75,090	75,090

**SCHEDULE D-2
CAPITAL OUTLAY EQUIPMENT**

University of Southern Mississippi - Auxiliary (268-01)

Name of Agency

EQUIPMENT BY ITEM	Act. FY Ending June 30, 2021		Est. FY Ending June 30, 2022		Req. FY Ending June 30, 2023	
	No. of Units	Total Cost	No. of Units	Total Cost	No. of Units	Total Cost

B. Road Machinery, Farm & Other Equipment (63300xxx)						
Vehicles Over \$5000	2	52,250	2	79,808	2	79,808
Total		52,250		79,808		79,808

F. Other Equipment (63200xxx)						
Other Equipment Over \$5000	3	36,342	3	36,342	3	36,342
Total		36,342		36,342		36,342

Grand Total <i>(Enter on Line 1-D-2 of Form MBR-1)</i>		88,592		116,150		116,150
--	--	---------------	--	----------------	--	----------------

Funding Summary:						
General Funds						
State Support Special Funds						
Federal Funds						
Other Special Funds		88,592		116,150		116,150
Total Funds		88,592		116,150		116,150

**SCHEDULE D-3
PASSENGER/WORK VEHICLES**

University of Southern Mississippi - Auxiliary (268-01)

Name of Agency

MINOR OBJECT OF EXPENDITURE	Vehicle Inventory June 30, 2021	Act. FY Ending June 30, 2021		Est. FY Ending June 30, 2022		Req. FY Ending June 30, 2023	
		No. of Units	Total Cost	No. of Units	Total Cost	No. of Units	Total Cost

GRAND TOTAL <i>(Enter on Line 1-D-3 of Form MBR-1)</i>							
--	--	--	--	--	--	--	--

Funding Summary:			
General Funds			
State Support Special Funds			
Federal Funds			
Other Special Funds			
Total Funds			

**SCHEDULE D-4
WIRELESS COMMUNICATION DEVICES**

University of Southern Mississippi - Auxiliary (268-01)
Name of Agency _____

MINOR OBJECT OF EXPENDITURE	Device Inventory June 30, 2021	Act. FY Ending June 30, 2021		Est. FY Ending June 30, 2022		Req. FY Ending June 30, 2023	
		No. of Devices	Actual Cost	No. of Devices	Estimated Cost	No. of Devices	Requested Cost

Grand Total <i>(Enter on Line 1-D-4 of Form MBR-1)</i>							
--	--	--	--	--	--	--	--

Funding Summary:							
General Funds							
State Support Special Funds							
Federal Funds							
Other Special Funds							
Total Funds							

SCHEDULE E
SUBSIDIES, LOANS & GRANTS

University of Southern Mississippi - Auxiliary (268-01)

Name of Agency

MINOR OBJECT OF EXPENDITURE	(1) Actual Expenses FY Ending June 30, 2021	(2) Estimated Expenses FY Ending June 30, 2022	(3) Requested for FY Ending June 30, 2023
D. Debt Service & Judgments (67205xxx-67255xxx, 68205xxx-68430xxx, 70040xxx)			
690180 Debt Service	11,316,316	11,334,884	11,334,884
Total	11,316,316	11,334,884	11,334,884
E. Other, Transfers (67000xxx-67199xxx, 67998xxx, 68500xxx-68860xxx, 70045xxx-70080xxx, 80000xxx-80500xxx)			
691 NMX OUT	381,010	381,010	381,010
Total	381,010	381,010	381,010
Grand Total <i>(Enter on Line 1-E of Form MBR-1)</i>	11,697,326	11,715,894	11,715,894
Funding Summary:			
General Funds			
State Support Special Funds			
Federal Funds			
Other Special Funds	11,697,326	11,715,894	11,715,894
Total Funds	11,697,326	11,715,894	11,715,894

NARRATIVE
2023 BUDGET REQUEST

University of Southern Mississippi - Auxiliary (268-01)

Name of Agency

The University of Southern Mississippi's auxiliary enterprises are self-supporting entities. The larger auxiliaries include Residence Life, Moffitt Health Center, Recreational Sports, Intercollegiate Athletics, and Parking and Transit Services. These entities generate revenues from sales and services to the university community.

**OUT-OF-STATE TRAVEL
FISCAL YEAR 2023**

University of Southern Mississippi - Auxiliary (268-01)

Name of Agency

Note: All expenditures recorded on this form must be totaled and said total must agree with the out-of-state travel amount indicated for FY 2021 on Form Mbr-1, line 1.A.2.b.

Employee's Name	Destination	Purpose	Travel Cost	Funding Source
Out of State - Auxiliary & Athletics	Out of State	Out Of State Travel	1,642,141	Auxiliary Revenues
		Total Out of State Cost	\$ 1,642,141	

FEES, PROFESSIONAL AND OTHER SERVICES

University of Southern Mississippi - Auxiliary (268-01)

Name of Agency

TYPE OF FEE AND NAME OF VENDOR	Retired w/ PERS	(1) Actual Expenses FY Ending June 30, 2021	(2) Estimated Expenses FY Ending June 30, 2022	(3) Requested Expenses FY Ending June 30, 2023	Fund Source
6057 Fees					
Bank/Merchant Fees/Bank/Merchant Fees <i>Comp. Rate: \$20,000 To \$30,000 Per Year</i>	N	23,772	30,000	30,000	Sales & Service
Consultant Expense Reimbursement/Consultant Expense <i>Comp. Rate: \$100 to \$500 Per Year</i>	N	200	400	400	Sales & Service
Laboratory And Testing Fees/Laboratory And Testing Fees <i>Comp. Rate: \$70,000 - \$80,000 Per Year</i>	N	72,750	80,000	80,000	Sales & Service
Legal Fees/Legal Fees <i>Comp. Rate: \$50 To \$1,000 Per Year</i>	N	52	500	500	Sales & Service
Other Professional Fees And Sv/Other Professional Fees And Sv <i>Comp. Rate: \$500,000 To \$1,000,000 Per Year</i>	N	507,273	750,000	750,000	Sales & Service
Participant Cost-Cont Services/Participant Cost-Cont Services <i>Comp. Rate: \$500 To \$1,500 Per Year</i>	N	1,366	1,500	1,500	Sales & Service
Professional Development Fees/Professional Development Fees <i>Comp. Rate: \$3,000 To \$5,000 Per Year</i>	N	4,837	5,000	5,000	Sales & Service
Technology Prof Fees & Svcs/Technology Prof Fees & Svcs <i>Comp. Rate: \$3,000 To \$5,000 Per Year</i>	N	2,490	5,000	5,000	Sales & Service
Total 6057 Fees		612,740	872,400	872,400	
GRAND TOTAL		612,740	872,400	872,400	

VEHICLE PURCHASE DETAILS

University of Southern Mississippi - Auxiliary (268-01)

Name of Agency

Year	Model	Person(s) Assigned To	Vehicle Purpose/Use	Replacement Or New?	FY2023 Req. Cost
-------------	--------------	------------------------------	----------------------------	--------------------------------	-----------------------------

TOTAL VEHICLE REQUEST

**VEHICLE INVENTORY
AS OF JUNE 30, 2021**

University of Southern Mississippi - Auxiliary (268-01)

Name of Agency

Vehicle Type	Vehicle Description	Model Year	Model	Person(s) Assigned To	Purpose/Use	Tag Number	Mileage on 6-30-2021	Average Miles per Year	Replacement Proposed	
									FY2022	FY2023

**VEHICLE POOL MEMBER LIST
2023 BUDGET REQUEST**

University of Southern Mississippi - Auxiliary (268-01)

Name of Agency

See Hattiesburg MBR

**PRIORITY OF DECISION UNITS
FISCAL YEAR 2023**

University of Southern Mississippi - Auxiliary (268-01)

Name of Agency

Program	Decision Unit	Object	Amount
----------------	----------------------	---------------	---------------

CAPITAL LEASES

University of Southern Mississippi - Auxiliary (268-01)

Name of Agency

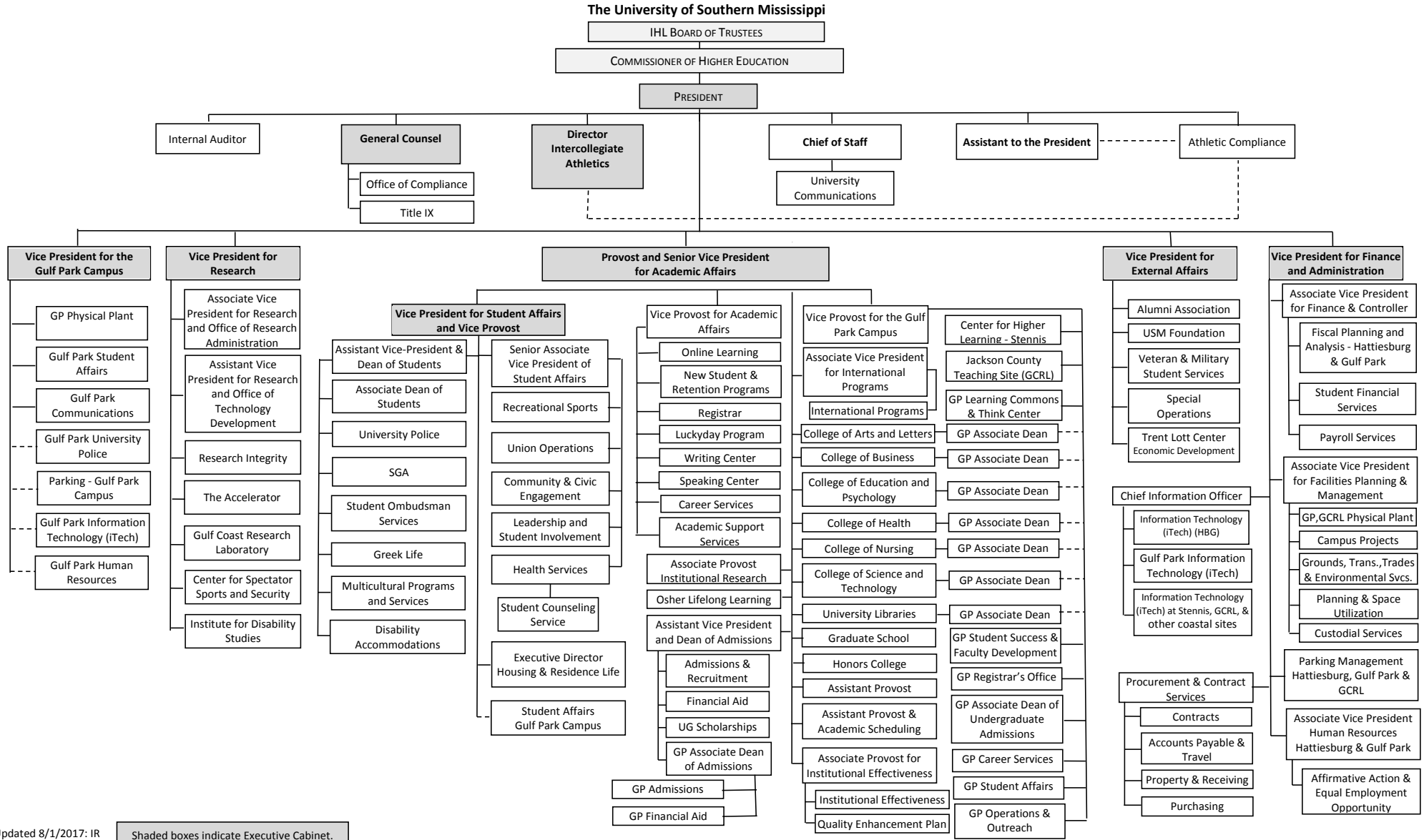
VENDOR/ ITEM LEASED	Original Date of Lease	Original No. of Months of Lease	No. of Months Remaining on 6-30-21	Last Payment Date	Interest Rate	Amount of Each Payment			Total of Payments To Be Made											
						Actual FY 2021			Estimated FY 2022			Requested FY 2023								
						Principal	Interest	Total	Principal	Interest	Total	Principal	Interest	Total						

Summary of 3% General Fund Program Reduction to FY 2022 Appropriated Funding by Major Object

University of Southern Mississippi - Auxiliary (268-01)

Name of Agency

Major Object	FY2022 General Fund Reduction	EFFECT ON FY2022 STATE SUPPORT SPECIAL FUNDS	EFFECT ON FY2022 FEDERAL FUNDS	EFFECT ON FY2022 OTHER SPECIAL FUNDS	TOTAL 3% REDUCTIONS
SALARIES, WAGES, FRINGE					
TRAVEL					
CONTRACTUAL					
COMMODITIES					
OTHER THAN EQUIPMENT					
EQUIPMENT					
VEHICLES					
WIRELESS COMM. DEVS.					
SUBSIDIES, LOANS, ETC					
TOTALS					





Updated 8/1/2017: IR

Shaded boxes indicate Executive Cabinet.

BOARD OF TRUSTEES OF STATE
INSTITUTIONS OF HIGHER LEARNING
STATE OF MISSISSIPPI

Schedule A
Salaries and Wages

Agency: University of Southern Mississippi - Auxiliary (268-01)

	Actual Expenses		Estimated Expenses		Required for	
	FY Ending		FY Ending		FY Ending	
	30-Jun-21		30-Jun-22		30-Jun-23	
	FTE	Dollars	FTE	Dollars	FTE	Dollars
CURRENT POSITIONS:						
1000 - Salaries	0.00	0	0.00	0	0.00	0
1100 - Exec, Admin & Managerial	0.00	0	0.00	0	0.00	0
1200 - Faculty	0.00	0	0.00	0	0.00	0
9 month	0.00	0	0.00	0	0.00	0
12 month	0.00	0	0.00	0	0.00	0
Other	<u>0.00</u>	<u>0</u>	<u>0.00</u>	<u>0</u>	<u>0.00</u>	<u>0</u>
Total Faculty	0.00	0	0.00	0	0.00	0
1100 - Exec Admin And Managerial	27.00	1,183,265	25.00	1,297,564	25.00	1,297,564
1300 - Professional Non-faculty	128.00	9,398,192	123.00	10,306,023	123.00	10,306,023
1400 - Clerical and Secretarial	29.00	778,097	28.00	853,258	28.00	853,258
1500 - Technical & Paraprofessional	4.00	250,653	4.00	274,865	4.00	274,865
1600 - Skilled Crafts	10.00	531,507	10.00	582,849	10.00	582,849
1700 - Services/Maintenance	65.00	1,379,069	56.00	1,512,282	56.00	1,512,282
1800 - Students	<u>118.00</u>	<u>1,354,886</u>	<u>140.00</u>	<u>1,485,763</u>	<u>140.00</u>	<u>1,485,763</u>
TOTAL	<u>381.00</u>	<u>14,875,669</u>	<u>386.00</u>	<u>16,312,604</u>	<u>386.00</u>	<u>16,312,604</u>
NEW POSITIONS REQUIRED FOR FY 2023:					FTE	Dollars
1100 - Exec, Admin & Managerial					0.00	0
1200 - Faculty					0.00	0
9 month					0.00	0
12 month					0.00	0
Other					0.00	0
1300 - Professional Non-faculty					0.00	0
1400 - Clerical and Secretarial					0.00	0
1500 - Technical & Paraprofessional					0.00	0
1600 - Skilled Crafts					0.00	0
1700 - Services/Maintenance					0.00	0
1800 - Students	<u>0.00</u>	<u>0</u>				
TOTAL	<u>0.00</u>	<u>0</u>				
PROMOTIONS, REALIGNMENTS, RECLASSIFICATIONS FOR FY 2023:					Dollars	
1100 - Exec, Admin & Managerial					0	
1200 - Faculty					0	
9 month					0	
12 month					0	
Other					0	
1300 - Professional Non-faculty					0	
1400 - Clerical and Secretarial					0	
1500 - Technical & Paraprofessional					0	
1600 - Skilled Crafts					0	
1700 - Services/Maintenance					0	
1800 - Students	<u>0</u>					
TOTAL	<u>0</u>					
GRAND TOTAL Salaries and Wages	381.00	14,875,669	386.00	16,312,604	386.00	16,312,604

BOARD OF TRUSTEES OF STATE
INSTITUTIONS OF HIGHER LEARNING
STATE OF MISSISSIPPI

Schedule A-1
Fringe Benefits

Agency: University of Southern Mississippi - Auxiliary (268-01)

	Actual Expenses FY Ending 30-Jun-21	Estimated Expenses FY Ending 30-Jun-22	Continuation Required for FY Ending 30-Jun-23
CURRENT POSITIONS:			
3910 - Employees' Retirement Matching	2,206,580	2,380,646	2,380,646
3920 - FICA Matching	923,350	996,188	996,188
3930 - Workers' Compensation	181,717	196,052	196,052
3940 - Health Insurance Contribution	1,024,160	1,104,951	1,104,951
3945 - GA Health Insurance Contribution	5,034	5,431	5,431
3950 - Group Life Insurance	11,936	12,878	12,878
3960 - Civil Service (Agriculture Units)	0	0	0
3970 - Unemployment Tax	24,634	26,577	26,577
3980 - Remission of Fees	249,413	269,088	269,088
3998-Fringe Transfers	<u>0</u>	<u>0</u>	<u>0</u>
TOTAL Fringe Benefits for Continuing Employees	4,626,824	4,991,811	4,991,811
ESTIMATED FRINGE BENEFITS REQUIRED FOR NEW POSITIONS FOR FY 2023:			
3910 - Employees' Retirement Matching			0
3920 - FICA Matching			0
3930 - Workers' Compensation			0
3940 - Health Insurance Contribution			0
3950 - Group Life Insurance			0
3960 - Civil Service (Agriculture Units)			0
3970 - Unemployment Tax			0
3980 - Remission of Fees			<u>0</u>
TOTAL Fringe Benefits for New Positions			0
FRINGE BENEFITS FOR PROMOTIONS, REALIGNMENTS, RECLASSIFICATIONS FOR FY 2023:			
3910 - Employees' Retirement Matching			0
3920 - FICA Matching			0
3930 - Workers' Compensation			0
3940 - Health Insurance Contribution			0
3950 - Group Life Insurance			0
3960 - Civil Service (Agriculture Units)			0
3970 - Unemployment Tax			0
3980 - Remission of Fees			<u>0</u>
TOTAL Fringe Benefits for Promotions, etc.			0
GRAND TOTAL Fringe Benefits	4,626,824	4,991,811	4,991,811
SUBTOTAL SALARIES, WAGES & FRINGE BENEFITS	19,502,493	21,304,415	21,304,415
LESS VACANCY RATE	<u>NA</u>	<u>0</u>	<u>0</u>
TOTAL SALARIES, WAGES & FRINGE BENEFITS	19,502,493	21,304,415	21,304,415