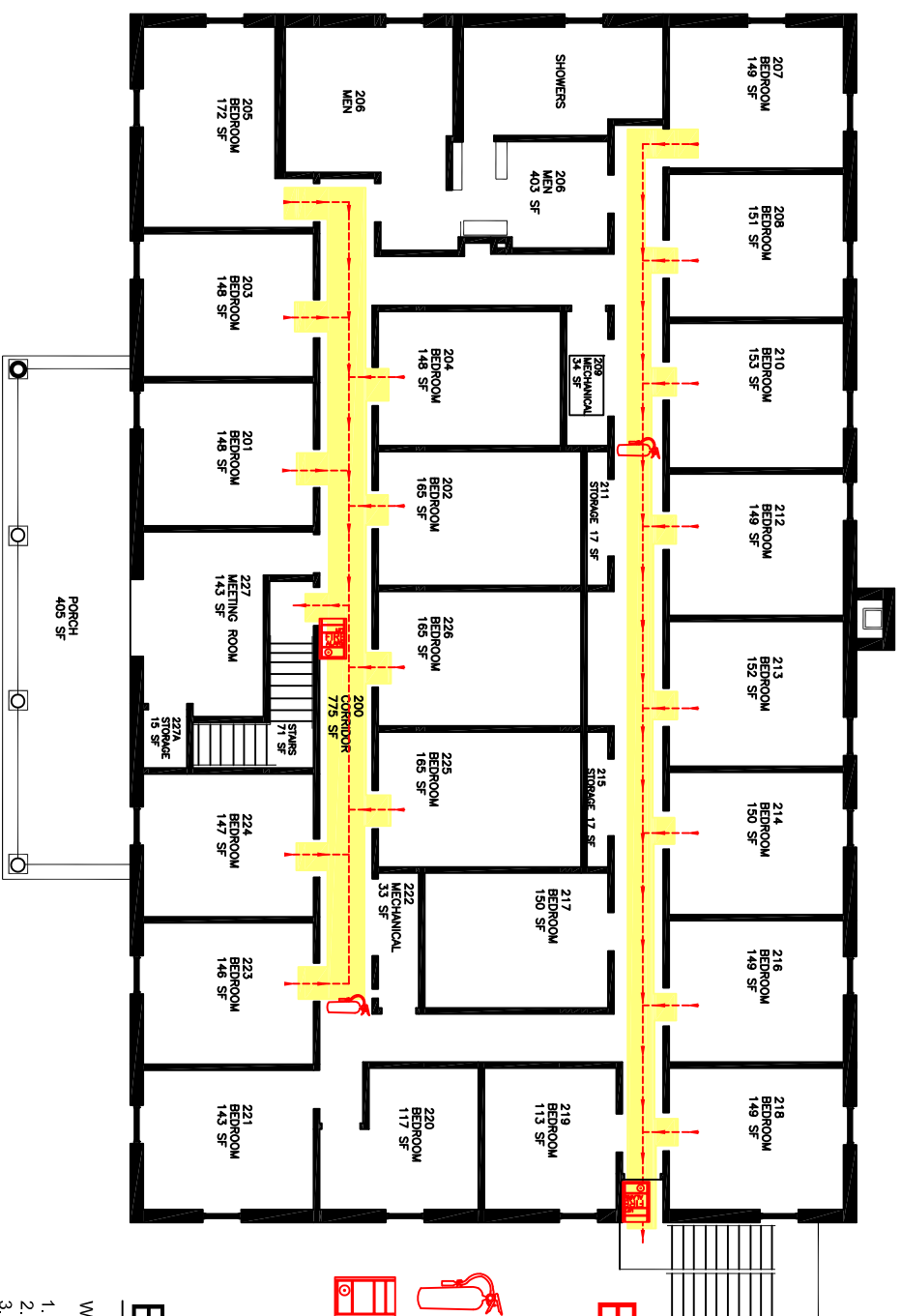


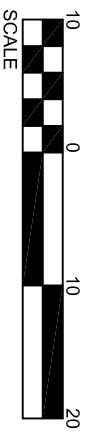
# FIRE EVACUATION PLAN



## PHI KAPPA TAU

### SECOND FLOOR PLAN

GROSS - 5,485 S.F.  
 ASSIGNED - 3,418 S.F.



**EXIT**

**FIRE EXTINGUISHER**

**FIRE ALARM PULL STATION**

**DIRECTION OF TRAVEL**

## EVACUATION PLAN

### WHAT TO DO WHEN THE FIRE ALARM SOUNDS:

1. Leave your room immediately, as required by state law.
2. Leave the wall or overhead light on.
3. Close the room door.
4. Walk quietly and quickly outside via the closest exit. If you are on an upper floor, use the closest stairwells. Do not use the elevators.
5. Remain outside until the signal is given to return to your room.

### WHAT TO DO DURING AN ACTUAL TORNADO WARNING (not a test):

1. Seek shelter inside the nearest building.
2. When the bad weather hits, move to a center hallway away from windows and doors and sit down with your back to the wall.
3. If you have a backpack, use it to cover your head.
4. Do not touch metal pipes or metal structures during the storm.
5. Tune to a local TV or radio station for weather updates.