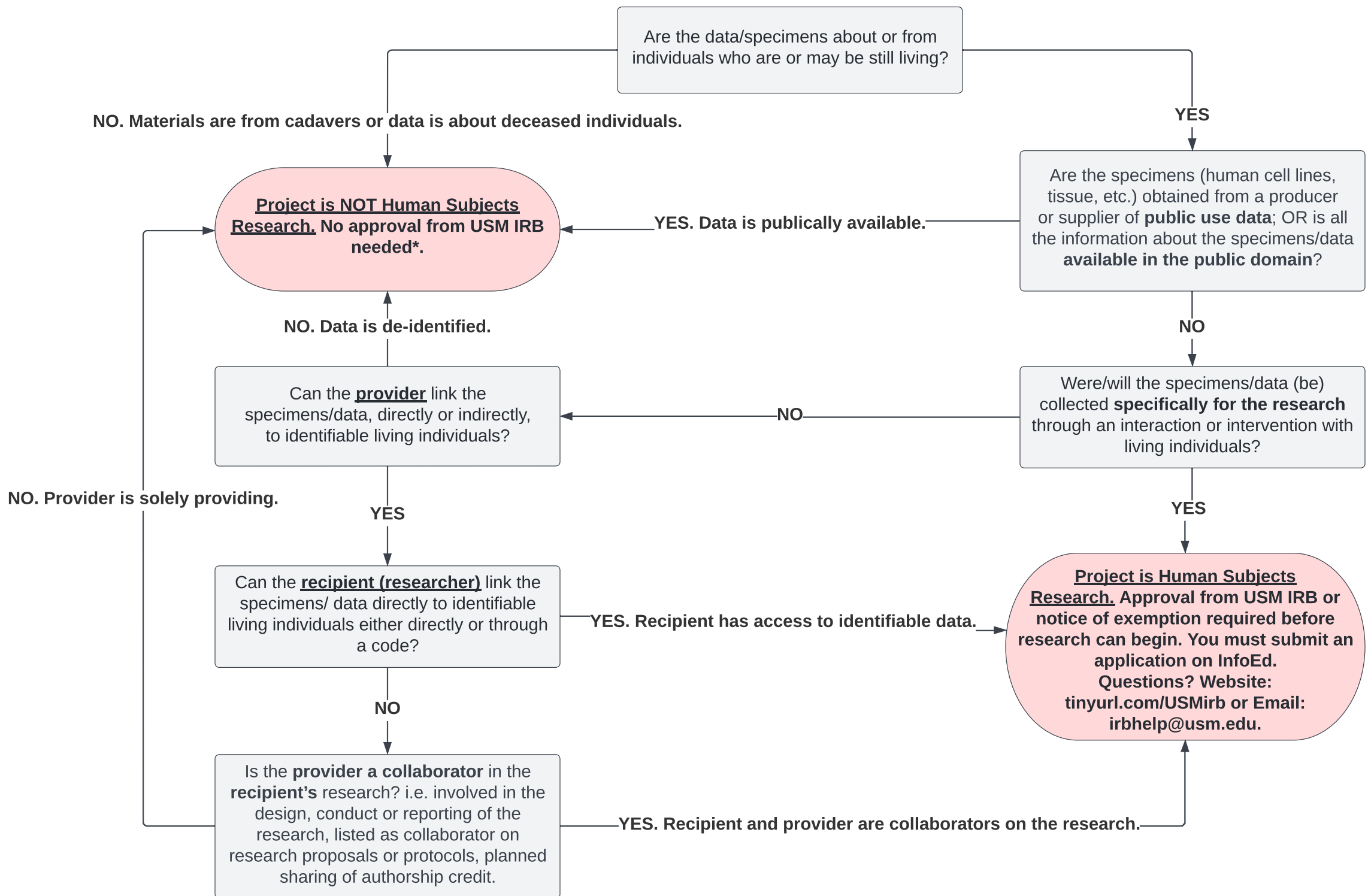


## Does Your Research Involving Secondary or Existing Data, Documents or Biological Specimens Require Approval by USM's IRB? Decision Tree #2



**\*If acquiring the data or specimens will require a Data Sharing Agreement between the provider and recipient, you must submit a Data Sharing Form ([tinyurl.com/USMirbForms](https://tinyurl.com/USMirbForms)) to [Samuel.Bruton@usm.edu](mailto:Samuel.Bruton@usm.edu).**

Source:  
This decision tree was adapted with approval from Cornell University's Research Office (<https://researchservices.cornell.edu/compliance/human-research>) in accordance with federal regulations (<https://www.hhs.gov/ohrp/regulations-and-policy/regulations/45-cfr-46/revised-common-rule-regulatory-text/index.html>).

\*\*If you determine that your study does not require IRB approval and would like an official Review Not Required letter, please email [Samuel.Bruton@usm.edu](mailto:Samuel.Bruton@usm.edu).