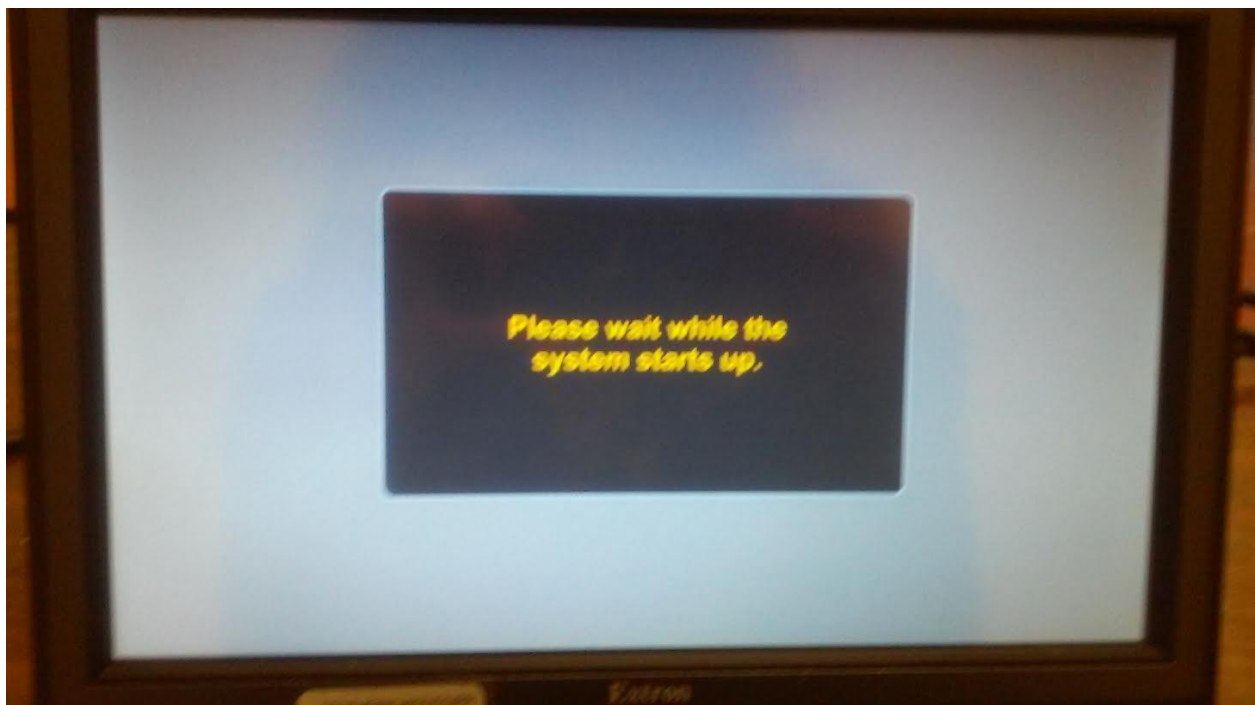


How to use the technology in 112 IVN Classroom.

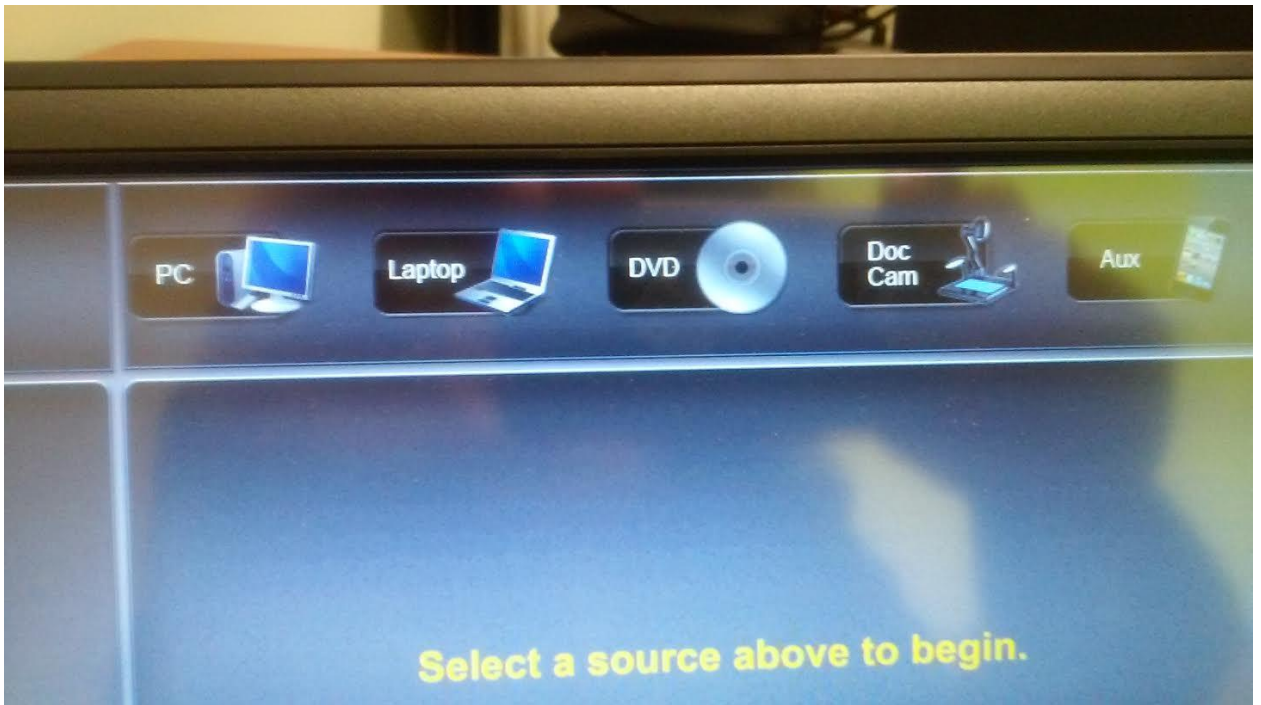
1. Power on system by pressing the power button located on the display screen of the touch-screen panel on the instructor's desk.



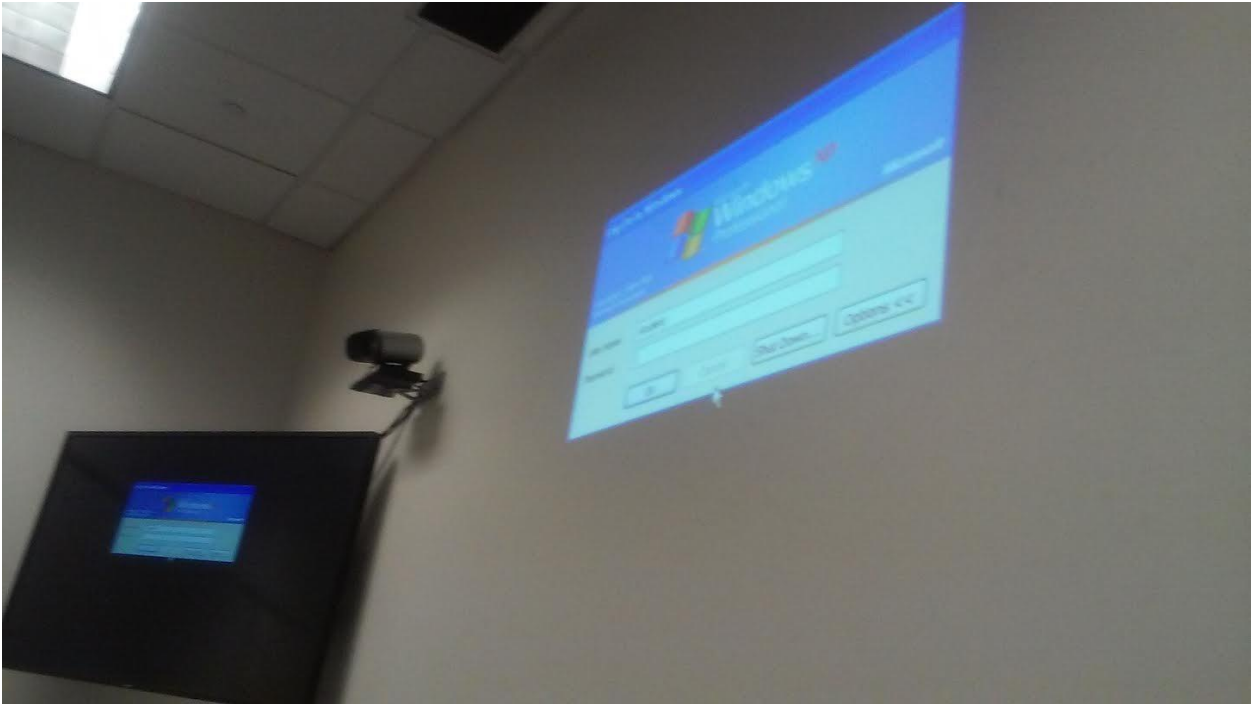
- This should make the USM logo slash screen display on both the LCD screens in the room.



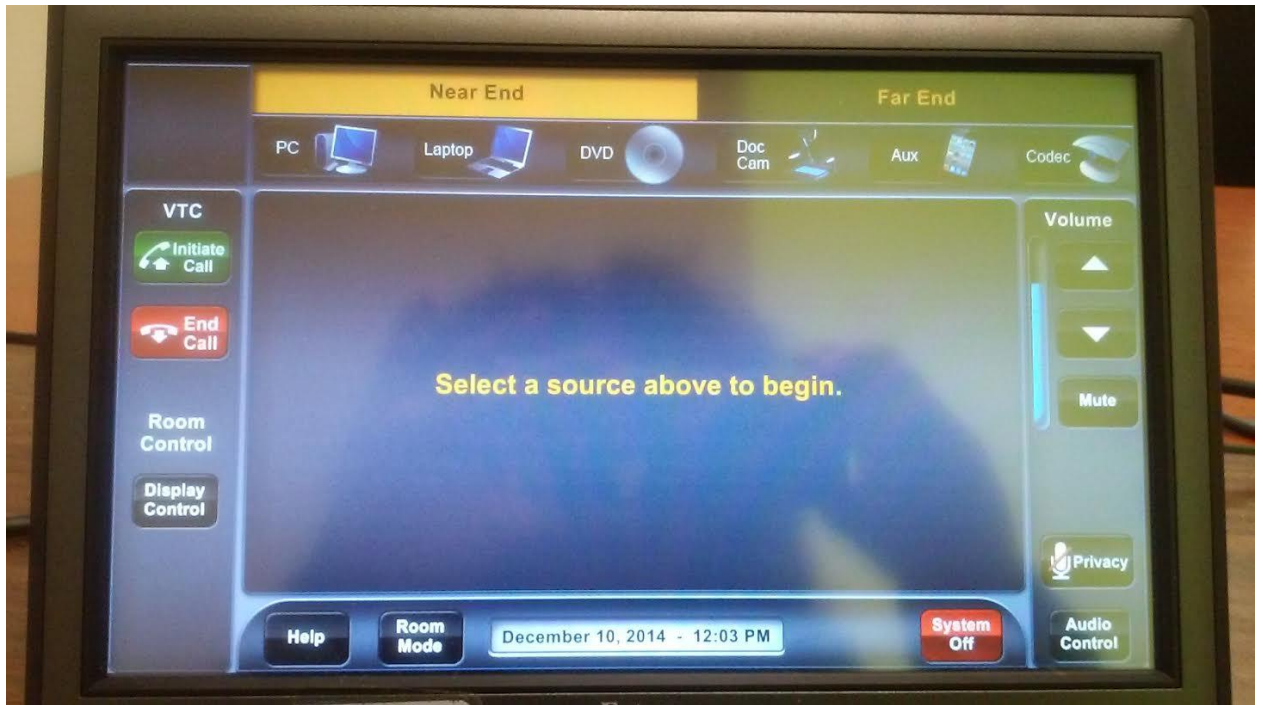
- Choose between Presentation mode or Video Conference mode.
(Presentation mode is just if you want to use the projector with a laptop for the room. Video conference mode is if you want to connect to a remote connection via IVN)
- If you have chosen Presentation mode, you will get a screen that looks like this. Choose which source you want to connect to. If you are using a laptop, choose "PC".



5. Your screen should change into this one.



6. If you choose Video Conference mode, your screen should look like this.



7. Select initiate call to connect to the remote site and enter the IP address of that location.



8. Press the call button.
9. To turn off the system. Go back to the main menu and press the system off button.

