

RESOURCES

UNIVERSITY POLICE DEPARTMENT (UPD)
601.266.4986

STUDENT HEALTH SERVICES
601.266.5390

STUDENT COUNSELING SERVICES
601.266.4829

AFTER-HOURS ON-CALL COUNSELOR
(EMERGENCIES ONLY)
601.606.HELP (4357)

CAMPUS TITLE IX COORDINATOR
601.266.6804/601.266.4466

SHAHER CENTER FOR CRISIS INTERVENTION
601.264.7777

FORREST GENERAL HOSPITAL
601.268.7000

MERIT HEALTH WESLEY MEDICAL CENTER
601.268.8000

NATIONAL SUICIDE PREVENTION HOTLINE
800.273.TALK (8255)

MISSISSIPPI COALITION AGAINST SEXUAL ASSAULT
MSCASA.ORG

RAPE, ABUSE AND INCEST NATIONAL NETWORK
RAINN.ORG

UNIVERSITY SEXUAL MISCONDUCT WEBSITE
WWW.USM.EDU/SEXUAL-MISCONDUCT

CONTACT

USM TITLE IX OFFICE



601.266.6804
601.266.4466



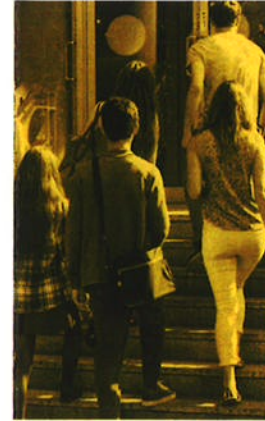
WWW.USM.EDU/
SEXUAL-MISCONDUCT



REBECCA.MALLEY@USM.EDU



SEXUAL MISCONDUCT INFORMATION AND RESOURCE GUIDE



AAVE/DE/PDM UC 76683.3079 6.17



THE UNIVERSITY OF
SOUTHERN MISSISSIPPI

SEXUAL MISCONDUCT POLICY

The University of Southern Mississippi prohibits sexual misconduct in any form. USM is committed to maintaining a community environment that recognizes the inherent worth and dignity of every person, regardless of race, religion, national origin, age, gender, gender identity, sexual orientation, disability or veteran status.

Sexual misconduct is inconsistent with the standards and ideals of our community and will not be tolerated. The University is committed to fostering an academic, work and living environment that is free from all forms of discrimination and sexual misconduct.



WHAT IS SEXUAL MISCONDUCT?

Sexual misconduct is a broad term encompassing any non-consensual behavior of a sexual nature that is committed by force or intimidation or that is otherwise unwelcomed.

Sexual misconduct encompasses behaviors such as the following:

- Rape
- Sexual assault (which includes any kind of non-consensual sexual contact)
- Sexual harassment
- Intimate (dating/relationship) partner violence
- Stalking - repetitive following and harassing of another person
 - » Cyber stalking - harassing through electronic communication such as email, IM, Twitter, Facebook, Snapchat and other forms of social media
- Any other conduct of a sexual nature that is non-consensual
 - » Non-consensual sexual intercourse
 - » Non-consensual sexual contact
 - » Non-consensual sexual exploitation
- Threatening speech, which is sufficiently serious to constitute sexual harassment, for example, is viewed as sexual misconduct.
- Photographs, video, or other visual or auditory records of sexual activity made without explicit consent constitute sexual misconduct, even if the activity documented was consensual.
 - » Similarly, sharing such recordings without explicit consent is a form of sexual misconduct.
- Sexual behavior that has the purpose or effect of
 - » Threatening
 - » Intimidating or
 - » Coercing a person or persons

RESOURCES AVAILABLE TO YOU FOR HELP

Student Counseling Services

Located in Bond Hall East (behind the parking garage), business hours are 8 a.m.-5 p.m., Monday through Friday. The center is closed for all University holidays.

Individuals with after-hours emergency needs should call a counselor on call at 601.606.HELP (4357) or 911.

Student Counseling Services provides quality services to all Southern Miss students by offering counseling to students to cope with trauma, grief, acute anxiety or depression, changes in thought content, and/or suicidal thoughts.

All services and support are provided free of charge to students.

Shafer Center for Crisis Intervention

The Shafer Center for Crisis Intervention is a non-profit agency dedicated to serving all survivors of sexual violence and co-victims of violent death, including homicide and suicide, at any point following their experiences, through direct services, advocacy, education and activism. All services are available to men and women, without regard to race, religion, income level, gender identity or sexual orientation.

Services Offered

- 24-Hour Crisis Line (601.264.7777)
- Emergency Domestic Violence Shelter
- Rape Crisis Response to Hospitals
- Free Legal Services
- Court Advocacy and Accompaniment
- Housing Assistance
- Adult and Children's Counseling
- Children's Program and Therapeutic Preschool

All services and support are provided free of charge to students.

Forrest General Hospital and Merit Health Wesley Medical Center Services

Forrest General Hospital and the Merit Health Wesley Medical Center offer SANE services (Sexual Assault Nurse Exam), also known as "rape kits." There is no fee charged for this test, nor will this information appear on your medical insurance benefits statement. The Shafer Center does offer rape crisis response to hospitals for all students who want or need support while going through a SANE procedure.